

**ULHB-200W-50K**  
**ULHB-200W-40K**  
**ULHB-200W-30K**

**LED HIGH-LUMEN UFO HIGH BAY**

**OPTIONAL ACCESORIES:**

MODEL	WATTS	VOLTAGE	LUMENS	COLOR TEMP
ULHB-200W-50K	200W	120~277V AC	26000 LM	5000K
ULHB-200W-40K	200W	120~277V AC	26000 LM	4000K
ULHB-200W-30K	200W	120~277V AC	26000 LM	3000K



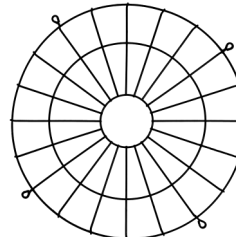
ULHB-PCR-200/240/300



ULHB-ALR-200/240/300



ULHB-90KIT-200/240/300



ULHB-WG-200/240/300



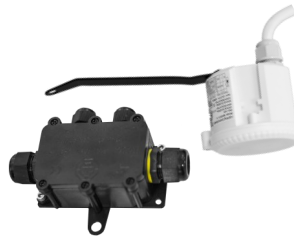
ULHB-SC-200/240/300



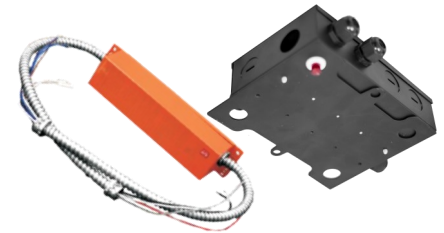
ULHB-PCC-200/240/300



ULHB-SMB-200/240/300



ULHB-SK



ULHB-EMK

MODEL	DESCRIPTION
ULHB-PCR-200/240/300	Polycarbonate Reflector for 200W & 240W & 300W
ULHB-ALR-200/240/300	Aluminum Reflector for 200W & 240W & 300W
ULHB-90KIT-200/240/300	90° Degree Reflector and Glass Kit for 200W & 240W & 300W (Conversion from default 110° beam angle)
ULHB-WG-200/240/300	Wire Guard for 200W & 240W & 300W
ULHB-SC-200/240/300	Safety Cable for 200W & 240W & 300W
ULHB-PCC-200/240/300	Polycarbonate Cover for 200W & 240W & 300W (for ULHB-PCR-200/240/300 only) - Increases heat captured in the reflector. Not recommended when not necessary.
ULHB-SMB-200/240/300	Surface Mount Bracket for 200W & 240W & 300W
ULHB-SK	Ultrasonic Bi-Level (Dimming) Motion Sensor Kit for 120~277V UFO High Bays.
ULHB-EMK	Emergency Battery Backup Kit for 120~277V UFO High Bays (All wattages) Emergency output power: 11W~28W, Emergency operation: ≥90 mins., Recharge: 48 Hrs. Includes special junction box with test button (mounts on fixture), auxiliary cables & splicers & push-in connector

