

### LED MR16 8.5W

**Dimmable / Replaces 50W Halogen**

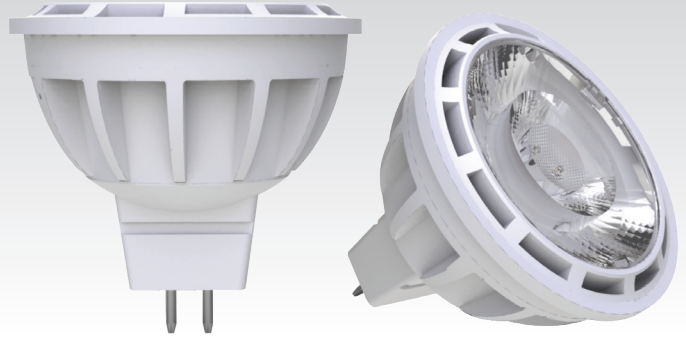
**Benefits:**

- Brings out the beauty and enhances colors
- Compact halogen form factor 1:1
- Will not fade colors (No UV Light)
- Long life = Low maintenance costs
- Low heat generation – great for temperature-sensitive display lighting
- Dynamic reds and natural skin tones
- Even, consistent dimming down to 5%
- Exceptional light output with very high lumens utilizing existing low voltage system.

**Features:**

- Exceptional color rendering CRI 93
- Available in Spot, Narrow Flood and Flood beam angles
- High efficacy rate – 70 LPW for 3000K
- RoHS compliant with no lead or mercury
- This device complies with part 15 of the FCC Rules
- Suitable for use in totally enclosed fixture

Energy Usage	8.5 Watts
Lumens	525/550/600/650 lm
CRI	93/83
R9/R13 Value	up to 64/90
CCT	2500/2700/3000/4000K
Beam Angles	15°/25°/35°
Efficacy	up to 70 LPW
Base Type	GU5.3
Voltage	12V
Dimming	MLV, ELV, TRIAC
Classification	Damp Rated
Operating Temperature	-4 to 104°F
Power Factor	0.9



**Applications:**

- Track lighting
- General lighting
- 12V applications
- Recessed downlighting
- Accent/Display lighting
- Great for galleries, retail, jewelry cases, showrooms, hospitality, restaurants and other commercial applications



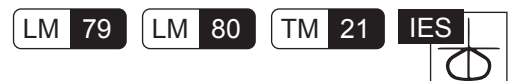
**Color:**

- Strict LED binning for consistent CCTs across all lamps
- Available in 2500K, 2700K, 3000K & 4000K CCT
- High CRI – 93
- High R9 – 64 (Reds)
- High R13 – 94 (Skin Tones)

For 2700, 3000 & 4000K CCT



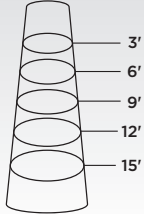
**5 YEAR WARRANTY** LIFE: **25,000 HOURS**



### LED MR16 8.5W

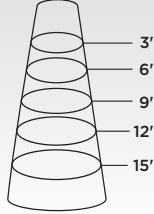
### ILLUMINANCE & CANDELA DISTRIBUTION

15° | 3000K



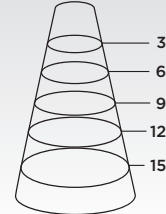
Diameter	Footcandles
0.7	522
1.4	131
2.1	58
2.8	33
3.5	21

25° | 3000K

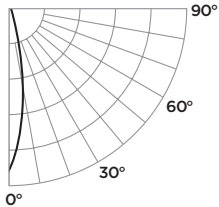


Diameter	Footcandles
1.1	309
2.3	77
3.4	34
4.6	19
5.7	12

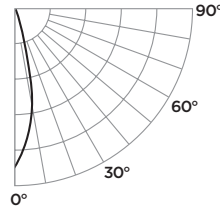
35° | 3000K



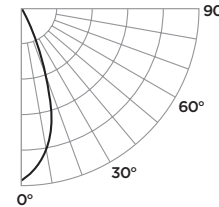
Diameter	Footcandles
1.8	185
3.5	46
5.3	21
7.0	12
8.8	7



Degree	Candela
0	6100
5	4573
15	1064
25	173
35	24
45	12



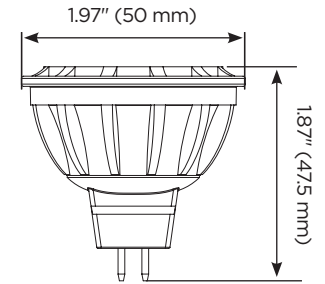
Degree	Candela
0	2830
5	2575
15	922
25	240
35	73
45	20



Degree	Candela
0	1680
5	1657
15	1114
25	361
35	63
45	17



Weight: 0.12 lb / 53 g



Type	Voltage	Wattage	Base	CBCP	Light Output	Color Temp.	CRI	Beam Angle	Equal	Product Description	Product Number	Master Carton Quantity
	(V)	(W)		(cd)	(lm)	(k)	(Ra)	∠°	(W)			(PCS)
MR16	12	8.5	GU5.3	6000	525	2700	93	15	50	DP018.5MR16GU5.3D927G115CB1W	1102011245	50
MR16	12	8.5	GU5.3	2780	525	2700	93	25	50	DP018.5MR16GU5.3D927G125CB1W	1102011246	50
MR16	12	8.5	GU5.3	1400	525	2700	93	35	50	DP018.5MR16GU5.3D927G135CB1W	1102011247	50
MR16	12	8.5	GU5.3	6100	550	3000	93	15	50	DP018.5MR16GU5.3D930G115CB1W	1102011248	50
MR16	12	8.5	GU5.3	2830	550	3000	93	25	50	DP018.5MR16GU5.3D930G125CB1W	1102011249	50
MR16	12	8.5	GU5.3	1680	550	3000	93	35	50	DP018.5MR16GU5.3D930G135CB1W	1102011250	50
MR16	12	8.5	GU5.3	6150	600	4000	93	15	50	DP018.5MR16GU5.3D940G115CB1W	1102011251	50
MR16	12	8.5	GU5.3	2880	600	4000	93	25	50	DP018.5MR16GU5.3D940G125CB1W	1102011252	50
MR16	12	8.5	GU5.3	1700	600	4000	93	35	50	DP018.5MR16GU5.3D940G135CB1W	1102011253	50
MR16	12	8.5	GU5.3	5500	650	2500	83	15	50	DP018.5MR16GU5.3D825G115CB1W	1102011507	50
MR16	12	8.5	GU5.3	2600	650	2500	83	25	50	DP018.5MR16GU5.3D825G125CB1W	1102011508	50
MR16	12	8.5	GU5.3	1500	650	2500	83	35	50	DP018.5MR16GU5.3D825G135CB1W	1102011509	50