



CorePro MainsFit (UL Type-B) T8

43T8/COR/96-5CCT/MF52LS/G/FA8-R17D 10/1

The CorePro MainsFit (UL Type B) lamps are designed to be the perfect retrofit solution to move from traditional fluorescent lamps to energy saving LEDs. This ballast bypass lamp has everything needed built into the lamp with proven energy savings, long life (up to 50k hours), surge suppression and industry leading safety features. All lamps in the CorePro MainsFit family are double-ended to help simplify the installation. In addition, all lamps meet the Philips standards for light quality so that end users will be in a comfortable environment regardless of the CorePro MainsFit lamp type.

Product data

General Information	
Cap-Base	FA8/R17D
Nominal lifetime	50,000 hour(s)
Switching Cycle	50,000
Lighting Technology	LED
Light Technical	
Color Code	3000K/3500K/4000K/5000K/6500K
Beam Angle (Nom)	220 degree(s)
Luminous Flux	3,400 4,300 5,200 lm
Color Designation	3000K/3500K/4000K/5000K/6500K
Correlated Color Temperature (Nom)	Selectable 3000 3500 4000 5000 6500 K
Luminous Efficacy (rated) (Nom)	126 lm/W
Color Consistency	<3
Color rendering index (CRI)	80
LLMF At End Of Nominal Lifetime (Nom)	70 %

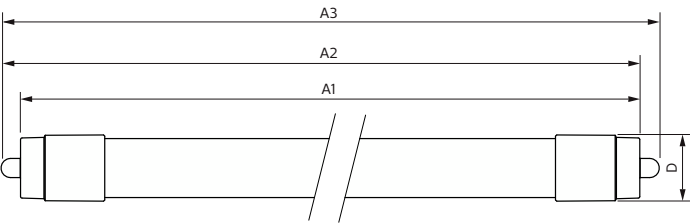
Photobiological safety according to EN 62471	RGO
Operating and Electrical	
Input Frequency	50 to 60 Hz
Power Consumption	26 34 43
Lamp Current (Nom)	480 mA
Wattage Equivalent	110 W
Starting Time (Nom)	0.5 s
Warm-up time to 60% light	0.5 s
Power Factor (Fraction)	0.9
Voltage (Nom)	120-277 V
UL Type	UL Type B
Temperature	
T-Case Maximum (Nom)	131 °F

CorePro MainsFit (UL Type-B) T8

Controls and Dimming	
Dimmable	Limited
Mechanical and Housing	
Bulb Finish	Frosted
Bulb Material	Glass
Product Length	94-1/2 inch
Bulb Shape	T8
Net Weight (Piece)	0.948 lb
Approval and Application	
Energy Saving Product	Yes
Approval Marks	RoHS compliance UL certificate DLC compliance
EU RoHS compliant	Yes
Ambient temperature range	-4 to +113 °F

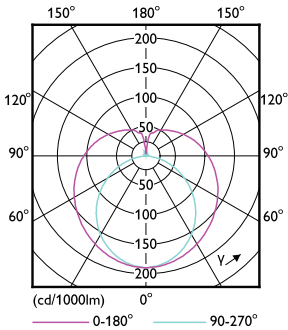
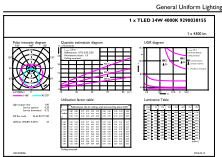
Application Conditions	
can it be used in closed luminaires	Yes
Product Data	
Order product name	43T8/COR/96-5CCT/MF52LS/G/FA8-R17D 10/1
Full product name	43T8/COR/96-5CCT/MF52LS/G/FA8-R17D 10/1
Order code	589804
Material Nr. (12NC)	929003815504
Numerator - Quantity Per Pack	1
EAN/UPC - Product/Case	046677589806
Numerator - Packs per outer box	10
EAN/UPC - Case	50046677589801

Dimensional drawing



Product	D1	D2	A1	A2	A3
43T8/COR/96-5CCT/ MF52LS/G/FA8-R17D 10/1		1-1/8 inch	93-5/16 inch	93-11/16 inch	94-1/16 inch

Photometric data

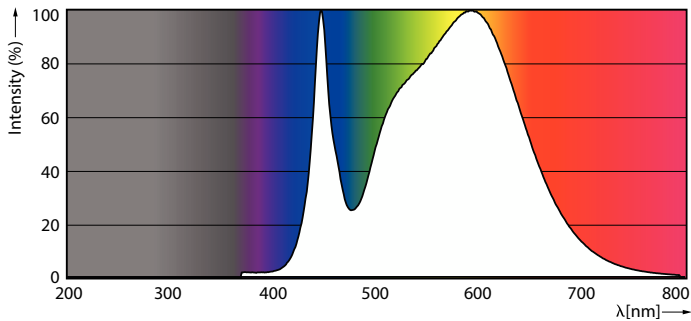


General uniform lighting - 43T8/COR/96-5CCT/MF52LS/G/FA8-R17D 10/1

Light Distribution Diagram - 43T8/COR/96-5CCT/MF52LS/G/FA8-R17D 10/1

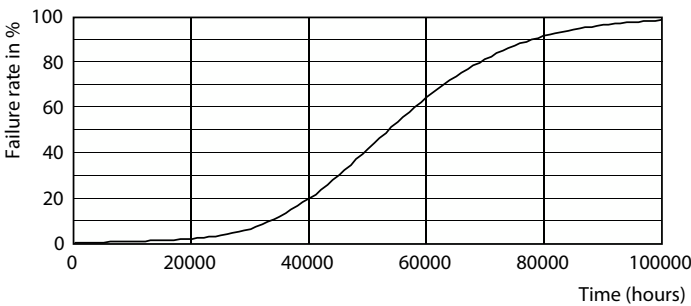
CorePro MainsFit (UL Type-B) T8

Photometric data

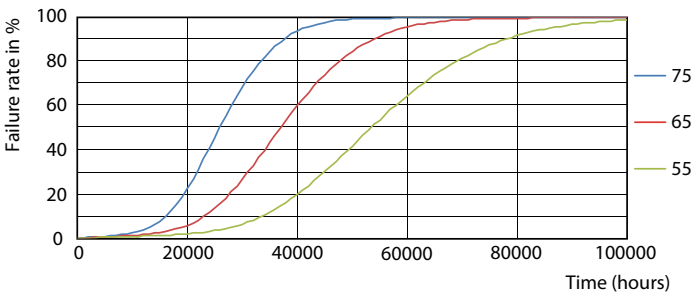


Spectral Power Distribution Colour - 43T8/COR/96-5CCT/MF52LS/G/FA8-R17D 10/1

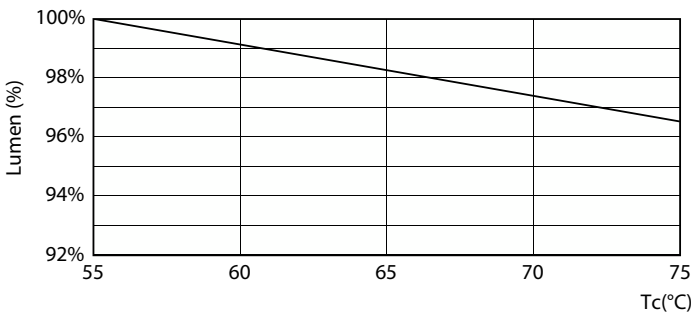
Lifetime



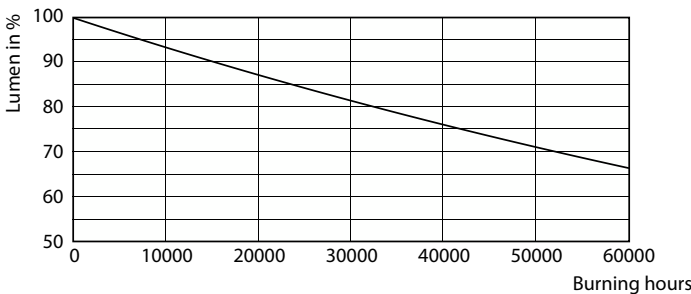
Life Expectancy Diagram



FailureRate



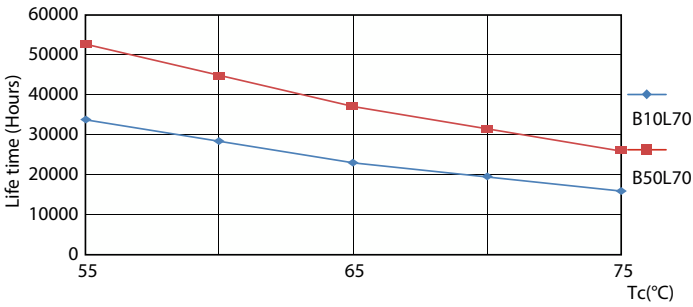
Lumen Maintenance Diagram - 43T8/COR/96-5CCT/MF52LS/G/FA8-R17D 10/1



Lumen Maintenance Diagram - 43T8/COR/96-5CCT/MF52LS/G/FA8-R17D 10/1

CorePro MainsFit (UL Type-B) T8

Lifetime



LifetimeVsTc

