



DC-Fit (UL Type-C) T8

10T8/COR/48-840/DF16/G/DIM UL-C 25/1

The DC-Fit (UL Type C) lamps are designed to be the perfect retrofit solution to move from traditional fluorescent lamps to energy saving LEDs. This lamp with DC driver has everything needed built into the lamp with proven energy savings, long life (up to 70k hours), better controllable performance and industry leading reliability features. All lamps in the DC-Fit family are double-ended to help simplify the installation. In addition, the DC lamps will have different lumen output with different dedicated DC drivers so that end users can have a comfortable environment with ideal light output.

Product data

General Information	
Cap-Base	G13 [Medium Bi-Pin Fluorescent]
Nominal lifetime	70,000 hour(s)
Switching Cycle	50,000
Lighting Technology	LED
Light Technical	
Color Code	840 [CCT of 4000K]
Beam Angle (Nom)	220 degree(s)
Luminous Flux	1,600 2,100 lm
Color Designation	Cool White (CW)
Correlated Color Temperature (Nom)	4000 K
Luminous Efficacy (rated) (Nom)	150 lm/W
Color Consistency	<6
Color rendering index (CRI)	80
LLMF At End Of Nominal Lifetime (Nom)	70 %
Operating and Electrical	
Input Frequency	- Hz

Power Consumption	10 14 W
Lamp Current (Max)	430 mA
Lamp Current (Min)	150 mA
Wattage Equivalent	32 W
Starting Time (Nom)	0.5 s
Warm-up time to 60% light	0.5 s
Power Factor (Fraction)	0.9
Voltage (Nom)	38-46 V
UL Type	UL Type C
Temperature	
T-Case Maximum (Nom)	122 °F
Controls and Dimming	
Dimmable	Only with specific dimmers
Mechanical and Housing	
Bulb Finish	Frosted
Bulb Material	Glass

DC-Fit (UL Type-C) T8

Product Length	47-1/4 inch
Bulb Shape	T8
Net Weight (Piece)	0.441 lb

Approval and Application

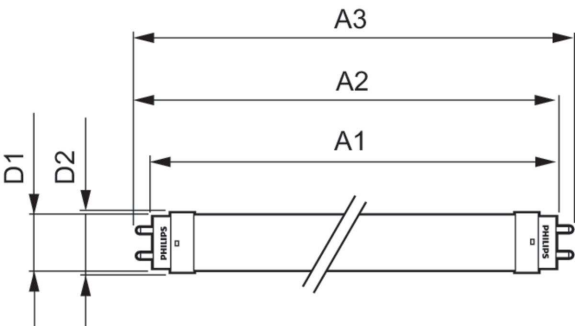
Energy Saving Product	Yes
Approval Marks	RoHS compliance UL certificate DLC compliance
EU RoHS compliant	Yes
Ambient temperature range	-4 to +113 °F

Application Conditions

can it be used in closed luminaires	Yes
-------------------------------------	-----

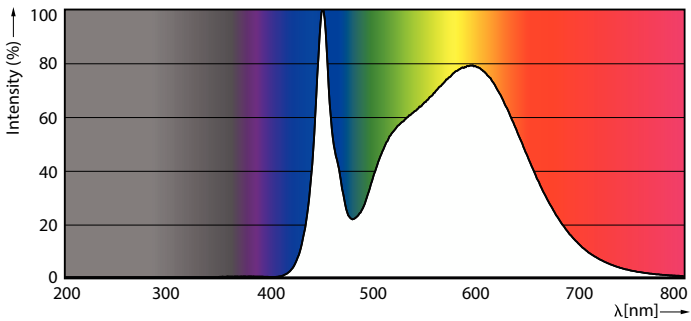
Product Data	
Order product name	10T8/COR/48-840/DF16/G/DIM UL-C 25/1
Full product name	10T8/COR/48-840/DF16/G/DIM UL-C 25/1
Order code	583988
Material Nr. (12NC)	929003651704
Numerator - Quantity Per Pack	1
EAN/UPC - Product/Case	046677583989
Numerator - Packs per outer box	25
EAN/UPC - Case	50046677583984

Dimensional drawing

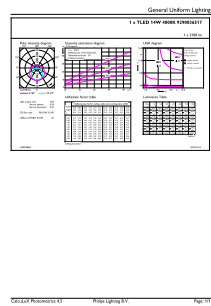


Product	D1	D2	A1	A2	A3
10T8/COR/48-840/DF16/G/DIM UL-C 25/1	1-1/16 inch	1-1/16 inch	47-3/16 inch	47-1/2 inch	47-3/4 inch

Photometric data



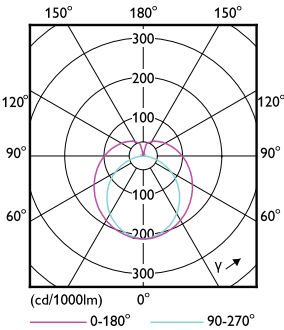
Spectral Power Distribution Colour - 10T8/COR/48-840/DF16/G/DIM UL-C 25/1



General uniform lighting - 10T8/COR/48-840/DF16/G/DIM UL-C 25/1

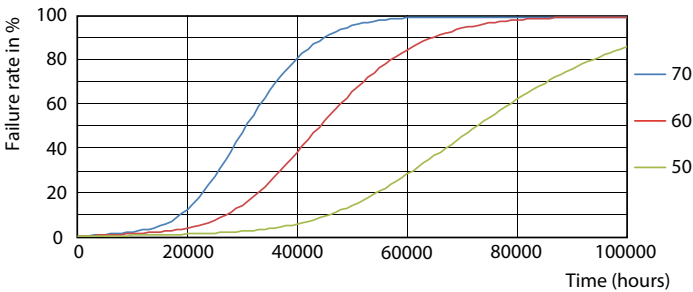
DC-Fit (UL Type-C) T8

Photometric data

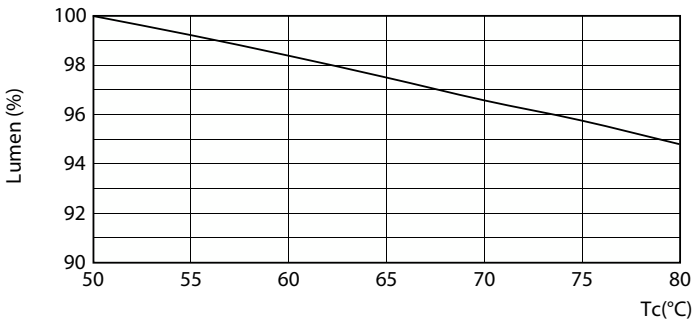


Light Distribution Diagram - 10T8/COR/48-840/DF16/G/DIM UL-C 25/1

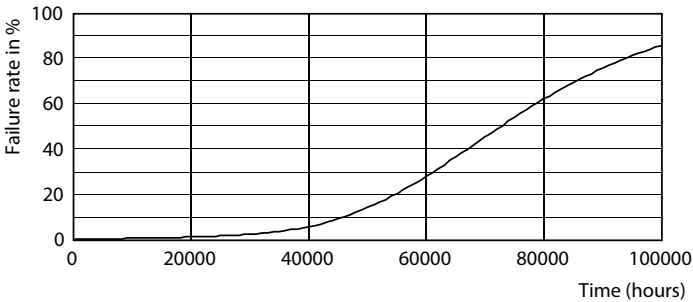
Lifetime



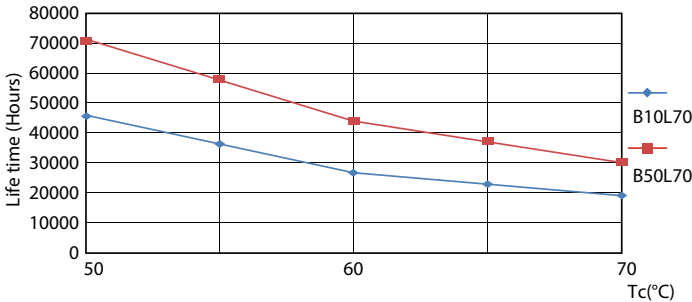
LEDtube 70K 5070 FailureRate-LED



Lumen Maintenance Diagram - 10T8/COR/48-840/DF16/G/DIM UL-C 25/1



Life Expectancy Diagram



LEDtube 70K 5070 LifetimeVsTc-LED

DC-Fit (UL Type-C) T8

Lifetime



Lumen Maintenance Diagram - 10T8/COR/48-840/DF16/G/DIM UL-C 25/1

