



DC-Fit (UL Type-C) T5

14T5/COR/46-850/DF21/G/DIM UL-C 25/1

The DC-Fit (UL Type C) lamps are designed to be the perfect retrofit solution to move from traditional fluorescent lamps to energy saving LEDs. This lamp with DC driver has everything needed built into the lamp with proven energy savings, long life (up to 70k hours), better controllable performance and industry leading reliability features. All lamps in the DC-Fit family are double-ended to help simplify the installation. In addition, the DC lamps will have different lumen output with different dedicated DC drivers so that end users can have a comfortable environment with ideal light output.

Product data

General Information		Power Consumption	
Cap-Base	G5		14.25 W
Nominal lifetime	50,000 hour(s)	Lamp Current (Max)	720 mA
Switching Cycle	50,000	Lamp Current (Min)	200 mA
Lighting Technology	LED	Wattage Equivalent	54 W
Light Technical		Starting Time (Nom)	0.5 s
Color Code	850 [CCT of 5000K]	Warm-up time to 60% light	0.5 s
Beam Angle (Nom)	200 degree(s)	Power Factor (Fraction)	0.9
Luminous Flux	2,100 3,550 lm	Voltage (Nom)	38-46 V
Color Designation	Daylight	UL Type	UL Type C
Correlated Color Temperature (Nom)	5000 K	Temperature	
Luminous Efficacy (rated) (Nom)	142 lm/W	T-Case Maximum (Nom)	149 °F
Color Consistency	<5	Controls and Dimming	
Color rendering index (CRI)	80	Dimmable	Only with specific dimmers
LLMF At End Of Nominal Lifetime (Nom)	70 %	Mechanical and Housing	
Operating and Electrical		Bulb Finish	Frosted
Input Frequency	- Hz	Bulb Material	Glass

DC-Fit (UL Type-C) T5

Product Length	47-1/4 inch
Bulb Shape	T5
Net Weight (Piece)	0.309 lb

Approval and Application

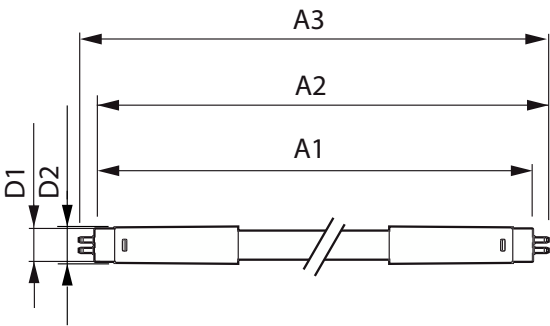
Energy Saving Product	Yes
Approval Marks	RoHS compliance UL certificate DLC compliance
EU RoHS compliant	Yes
Ambient temperature range	-4 to +113 °F

Application Conditions

can it be used in closed luminaires	Yes
-------------------------------------	-----

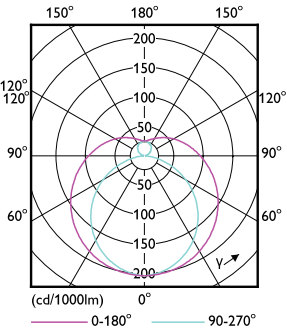
Product Data	
Order product name	14T5/COR/46-850/DF21/G/DIM UL-C 25/1
Full product name	14T5/COR/46-850/DF21/G/DIM UL-C 25/1
Order code	583970
Material Nr. (12NC)	929003651604
Numerator - Quantity Per Pack	1
EAN/UPC - Product/Case	046677583972
Numerator - Packs per outer box	25
EAN/UPC - Case	50046677583977

Dimensional drawing

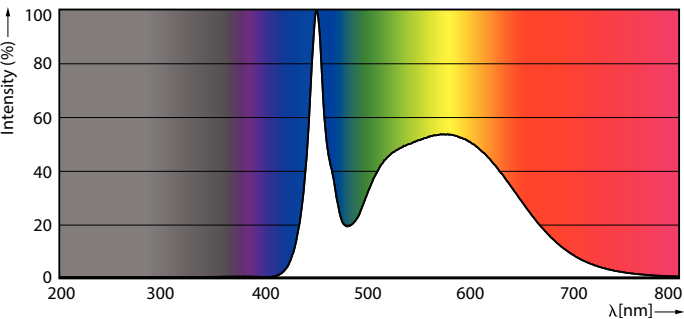


Product	D1	D2	A1	A2	A3
14T5/COR/46-850/DF21/G/DIM UL-C 25/1	5/8 inch	3/4 inch	45-3/16 inch	45-1/2 inch	45-3/4 inch

Photometric data



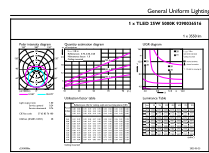
Light Distribution Diagram - 14T5/COR/46-850/DF21/G/DIM UL-C 25/1



Spectral Power Distribution Colour - 14T5/COR/46-850/DF21/G/DIM UL-C 25/1

DC-Fit (UL Type-C) T5

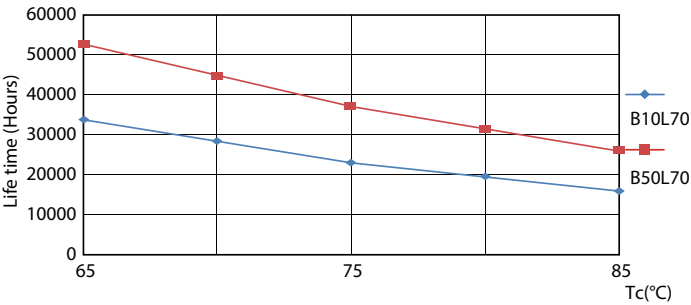
Photometric data



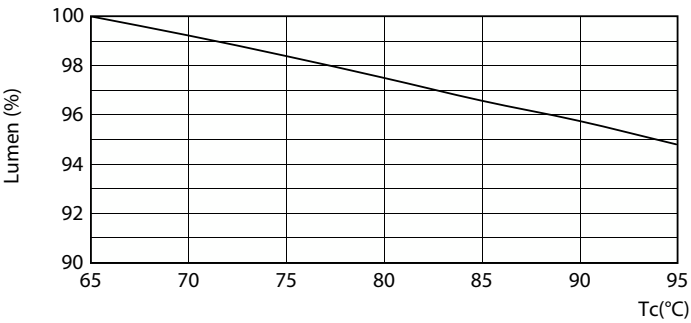
General Uniform Lighting 1400 2000 Beam Spread Page 117

General uniform lighting - 14T5/COR/46-850/DF21/G/DIM UL-C 25/1

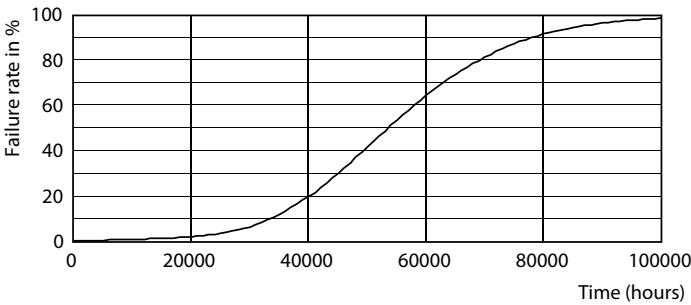
Lifetime



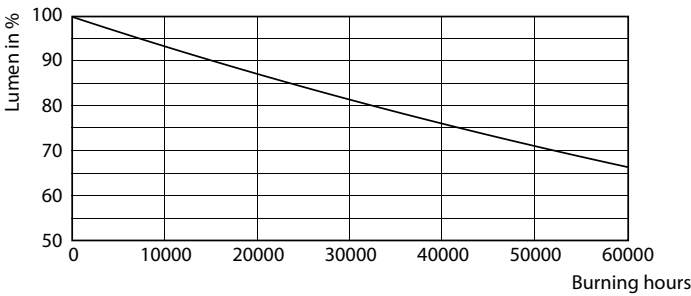
LifetimeVsTc



Lumen Maintenance Diagram - 14T5/COR/46-850/DF21/G/DIM UL-C 25/1



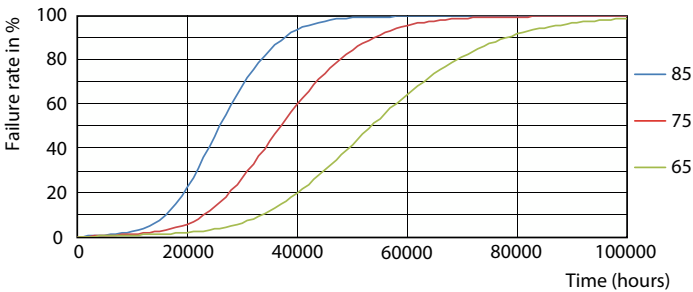
Life Expectancy Diagram



Lumen Maintenance Diagram - 14T5/COR/46-850/DF21/G/DIM UL-C 25/1

DC-Fit (UL Type-C) T5

Lifetime



FailureRate

