



DC-Fit (UL Type-C) T5

14T5/COR/46-840/DF21/G/DIM UL-C 25/1

The DC-Fit (UL Type C) lamps are designed to be the perfect retrofit solution to move from traditional fluorescent lamps to energy saving LEDs. This lamp with DC driver has everything needed built into the lamp with proven energy savings, long life (up to 70k hours), better controllable performance and industry leading reliability features. All lamps in the DC-Fit family are double-ended to help simplify the installation. In addition, the DC lamps will have different lumen output with different dedicated DC drivers so that end users can have a comfortable environment with ideal light output.

Product data

General Information		Power Consumption	14.25 W
Cap-Base	G5	Lamp Current (Max)	720 mA
Nominal lifetime	50,000 hour(s)	Lamp Current (Min)	200 mA
Switching Cycle	50,000	Wattage Equivalent	54 W
Lighting Technology	LED	Starting Time (Nom)	0.5 s
Light Technical		Warm-up time to 60% light	0.5 s
Color Code	840 [CCT of 4000K]	Power Factor (Fraction)	0.9
Beam Angle (Nom)	200 degree(s)	Voltage (Nom)	38-46 V
Luminous Flux	2,100 3,550 lm	UL Type	UL Type C
Color Designation	Cool White (CW)	Temperature	
Correlated Color Temperature (Nom)	4000 K	T-Case Maximum (Nom)	149 °F
Luminous Efficacy (rated) (Nom)	142 lm/W	Controls and Dimming	
Color Consistency	<6	Dimmable	Only with specific dimmers
Color rendering index (CRI)	80	Mechanical and Housing	
LLMF At End Of Nominal Lifetime (Nom)	70 %	Bulb Finish	Frosted
Operating and Electrical		Bulb Material	Glass
Input Frequency	- Hz		

DC-Fit (UL Type-C) T5

Product Length	47-1/4 inch
Bulb Shape	T5
Net Weight (Piece)	0.309 lb

Approval and Application

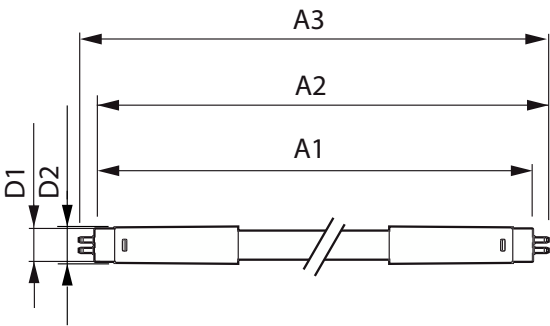
Energy Saving Product	Yes
Approval Marks	RoHS compliance UL certificate DLC compliance
EU RoHS compliant	Yes
Ambient temperature range	-4 to +113 °F

Application Conditions

can it be used in closed luminaires	Yes
-------------------------------------	-----

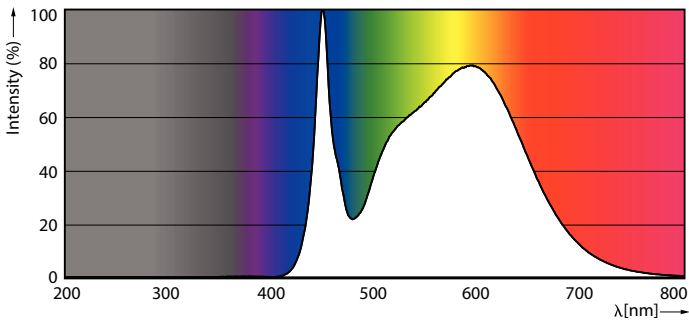
Product Data	
Order product name	14T5/COR/46-840/DF21/G/DIM UL-C 25/1
Full product name	14T5/COR/46-840/DF21/G/DIM UL-C 25/1
Order code	583962
Material Nr. (12NC)	929003651504
Numerator - Quantity Per Pack	1
EAN/UPC - Product/Case	046677583965
Numerator - Packs per outer box	25
EAN/UPC - Case	50046677583960

Dimensional drawing

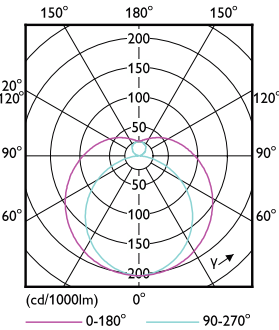


Product	D1	D2	A1	A2	A3
14T5/COR/46-840/DF21/G/DIM UL-C 25/1	5/8 inch	3/4 inch	45-3/16 inch	45-1/2 inch	45-3/4 inch

Photometric data



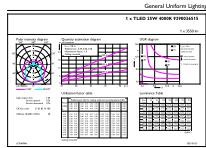
Spectral Power Distribution Colour - 14T5/COR/46-840/DF21/G/DIM UL-C 25/1



Light Distribution Diagram - 14T5/COR/46-840/DF21/G/DIM UL-C 25/1

DC-Fit (UL Type-C) T5

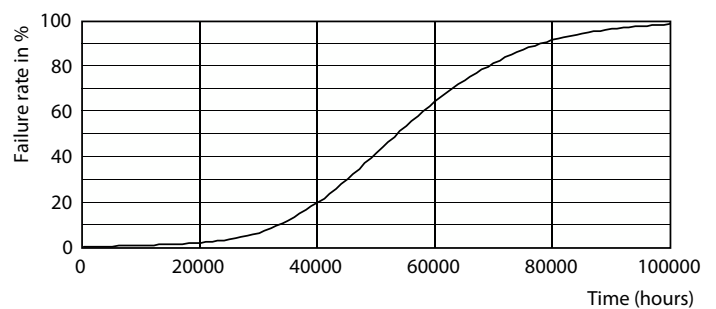
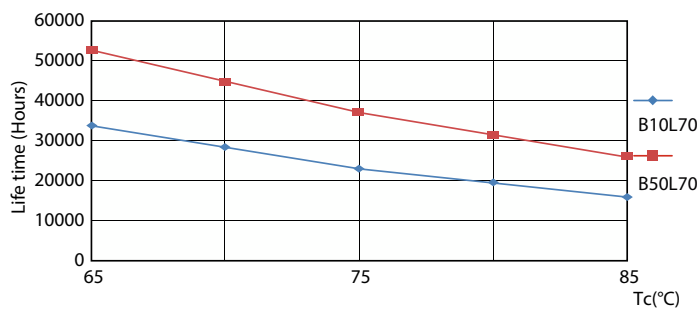
Photometric data



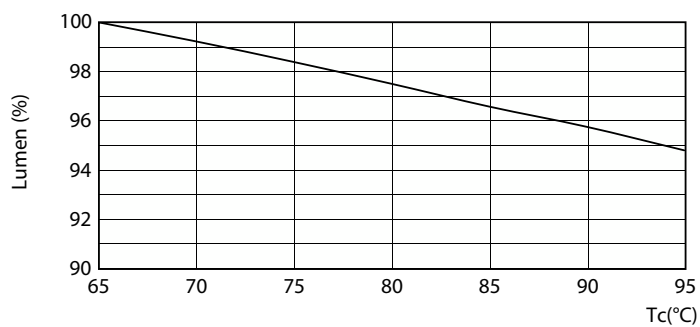
Calculus Parametric 4.3	Polys Lighting B.V.	Page 13
-------------------------	---------------------	---------

General uniform lighting - 14T5/COR/46-840/DF21/G/DIM UL-C 25/1

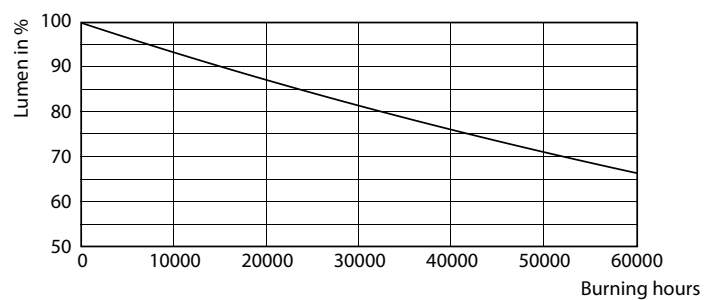
Lifetime



LifetimeVsTc



Life Expectancy Diagram

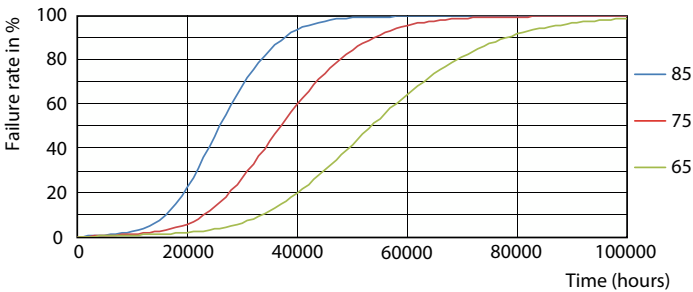


Lumen Maintenance Diagram - 14T5/COR/46-840/DF21/G/DIM UL-C 25/1

Lumen Maintenance Diagram - 14T5/COR/46-840/DF21/G/DIM UL-C 25/1

DC-Fit (UL Type-C) T5

Lifetime



FailureRate

