

# Corepro InstantFit (UL Type-A) T8

28T8/COR/96-840/IF42/G/FA8 10/1

The CorePro InstantFit LED lamps provide hassle-free installation with simple lamp-for-lamp replacements. They deliver what we promise, with at least 40% energy savings, flicker-free performance, and the life you would expect. Other lamps claim compatibility but only CorePro InstantFit (UL Type A) has been proven to work with over 200 ballasts and drivers, delivering even light output, with proven energy savings and a long average lifetime. End users will be delighted being under these comfortable and high quality CorePro InstantFit lamps with no visible flicker and optimized optics. Energy managers will enjoy these lamps too as they can count the savings delivered by our lamps. To enjoy more energy savings, the CorePro InstantFit lamps can be paired with the Advance TLED drivers to create a Type C system.

## Product data

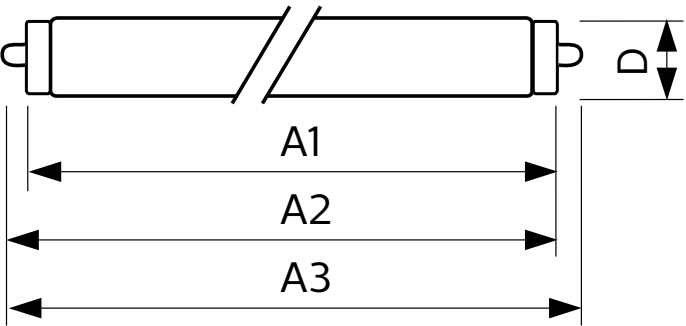
General Information		Color rendering index (CRI)	
Cap-Base	FA8		80
Nominal lifetime	50,000 hour(s)	LLMF At End Of Nominal Lifetime (Nom)	70 %
Switching Cycle	50,000	Operating and Electrical	
Lighting Technology	LED	Line Frequency	35K to 150K Hz
Light Technical		Input Frequency	35K to 150K Hz
Color Code	840 [CCT of 4000K]	Power Consumption	28 W
Beam Angle (Nom)	240 degree(s)	Lamp Current (Max)	400 mA
Luminous Flux	4,200 lm	Lamp Current (Min)	100 mA
Color Designation	Cool White (CW)	Wattage Equivalent	60 W
Correlated Color Temperature (Nom)	4000 K	Starting Time (Nom)	0.5 s
Luminous Efficacy (rated) (Nom)	150.00 lm/W	Warm-up time to 60% light	0.5 s
Color Consistency	ANSI	Power Factor (Fraction)	0.9
		Voltage (Nom)	120-277 V

Corepro InstantFit (UL Type-A) T8

UL Type	UL Type A
Temperature	
T-Case Maximum (Nom)	113 °F
Controls and Dimming	
Dimmable	No
Mechanical and Housing	
Bulb Finish	Frosted
Bulb Material	Glass
Product Length	94-1/2 inch
Bulb Shape	T8
Net Weight (Piece)	0.882 lb
Approval and Application	
Energy Saving Product	Yes
Approval Marks	RoHS compliance UL certificate

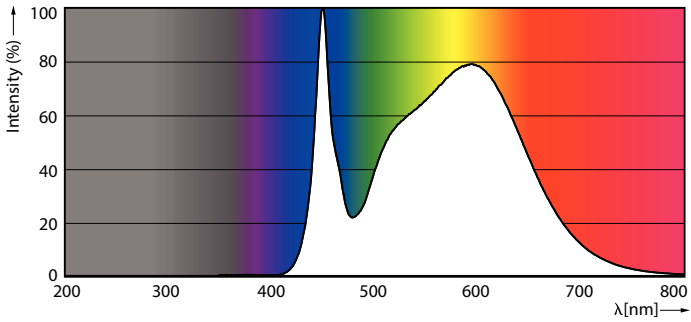
EU RoHS compliant	Yes
Ambient temperature range	-4 °F to 113 °F
Application Conditions	
can it be used in closed luminaires	Yes
Product Data	
Order product name	28T8/COR/96-840/IF42/G/FA8 10/1
Full product name	28T8/COR/96-840/IF42/G/FA8 10/1
Order code	580290
Material Nr. (12NC)	929003556804
Numerator - Quantity Per Pack	1
EAN/UPC - Product/Case	046677580292
Numerator - Packs per outer box	10
EAN/UPC - Case	50046677580297

Dimensional drawing

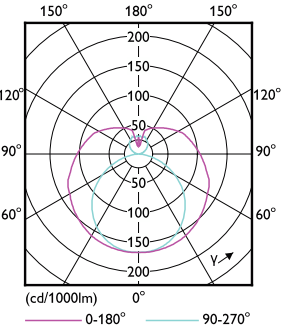


Product	D1	D2	A1	A2	A3
28T8/COR/96-840/IF42/G/FA8 10/1	1-1/16 inch	1-1/8 inch	93-3/16 inch	93-9/16 inch	93-15/16 inch

Photometric data



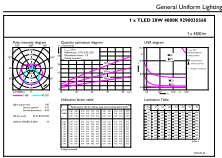
Spectral Power Distribution Colour - 28T8/COR/96-840/IF42/G/FA8 10/1



Light Distribution Diagram - 28T8/COR/96-840/IF42/G/FA8 10/1

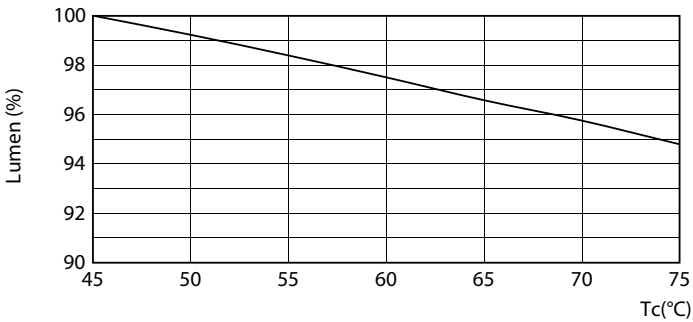
Corepro InstantFit (UL Type-A) T8

Photometric data

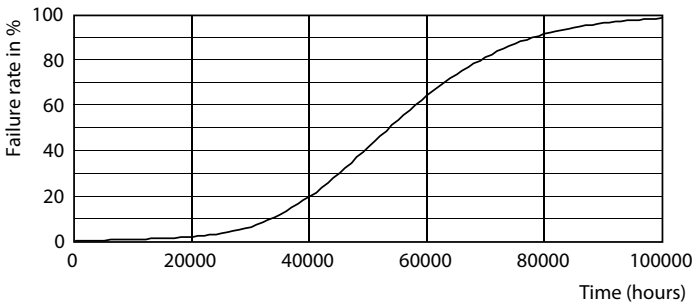


General Uniform Lighting - 28T8/COR/96-840/IF42/G/FA8 10/1

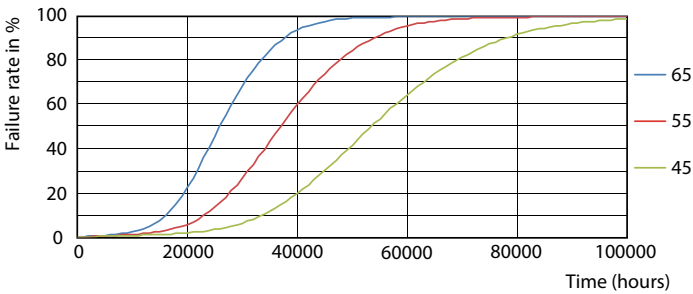
Lifetime



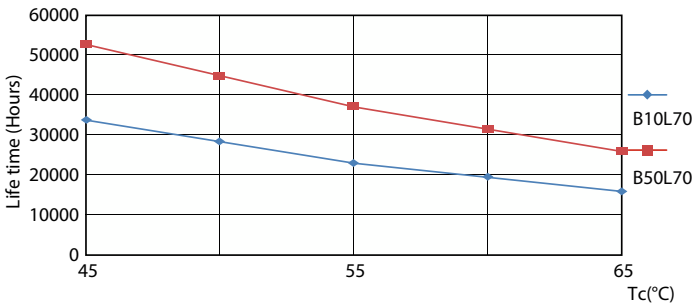
Lumen Maintenance Diagram - 28T8/COR/96-840/IF42/G/FA8 10/1



Life Expectancy Diagram



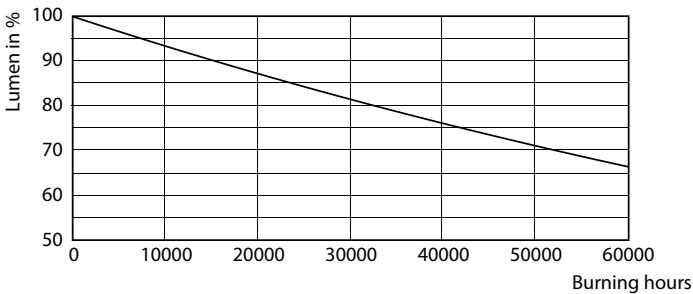
FailureRate



LifetimeVsTc

Corepro InstantFit (UL Type-A) T8

Lifetime



Lumen Maintenance Diagram - 28T8/COR/96-840/IF42/G/FA8 10/1

