

# Corepro InstantFit (UL Type-A) T8

## 11.5T8/COR/48-840/IF21/G/DIM 25/1

The CorePro InstantFit LED lamps provide hassle-free installation with simple lamp-for-lamp replacements. They deliver what we promise, with at least 40% energy savings, flicker-free performance, and the life you would expect. Other lamps claim compatibility but only CorePro InstantFit (UL Type A) has been proven to work with over 200 ballasts and drivers, delivering even light output, with proven energy savings and a long average lifetime. End users will be delighted being under these comfortable and high quality CorePro InstantFit lamps with no visible flicker and optimized optics. Energy managers will enjoy these lamps too as they can count the savings delivered by our lamps. To enjoy more energy savings, the CorePro InstantFit lamps can be paired with the Advance TLED drivers to create a Type C system.

### Product data

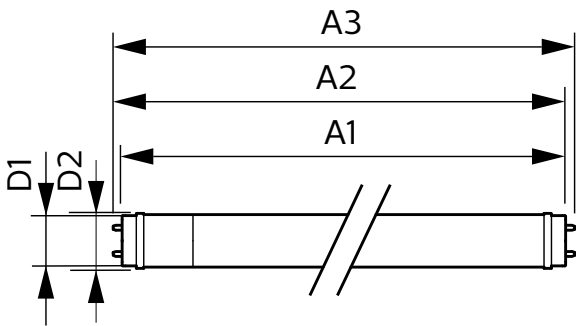
General Information		Color rendering index (CRI)	
Cap-Base	G13 [Medium Bi-Pin Fluorescent]	80	
Nominal lifetime	50,000 hour(s)	LLMF At End Of Nominal Lifetime (Nom) 70 %	
Switching Cycle	50,000		
Lighting Technology	LED		
Light Technical		Operating and Electrical	
Color Code	840 [CCT of 4000K]	Line Frequency	25K to 105K Hz
Beam Angle (Nom)	240 degree(s)	Input Frequency	25K to 105K Hz
Luminous Flux	2,100 lm	Power Consumption	11.5 W
Color Designation	Cool White (CW)	Lamp Current (Max)	260 mA
Correlated Color Temperature (Nom)	4000 K	Lamp Current (Min)	80 mA
Luminous Efficacy (rated) (Nom)	182.00 lm/W	Wattage Equivalent	32 W
Color Consistency	<6	Starting Time (Nom)	0.5 s
		Warm-up time to 60% light	0.5 s
		Power Factor (Fraction)	0.9
		Voltage (Nom)	120-277 V

Corepro InstantFit (UL Type-A) T8

UL Type	UL Type A
Temperature	
T-Case Maximum (Nom)	104 °F
Controls and Dimming	
Dimmable	No
Mechanical and Housing	
Bulb Finish	Frosted
Bulb Material	Glass
Product Length	47-1/4 inch
Bulb Shape	T8
Net Weight (Piece)	0.441 lb
Approval and Application	
Energy Saving Product	Yes
Approval Marks	RoHS compliance UL certificate DLC compliance

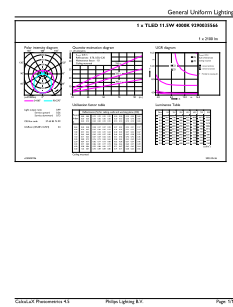
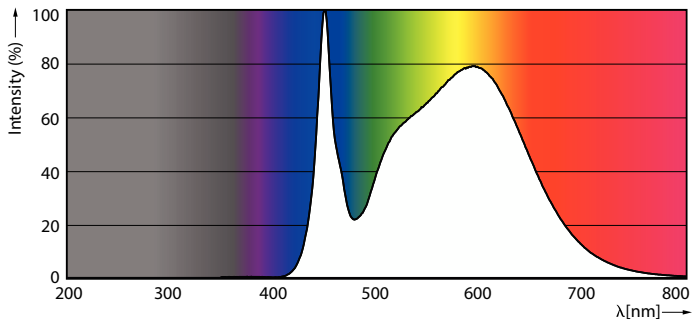
EU RoHS compliant	Yes
Ambient temperature range	-4 °F to 113 °F
Application Conditions	
can it be used in closed luminaires	Yes
Product Data	
Order product name	11.5T8/COR/48-840/IF21/G/DIM 25/1
Full product name	11.5T8/COR/48-840/IF21/G/DIM 25/1
Order code	580274
Material Nr. (12NC)	929003556604
Numerator - Quantity Per Pack	1
EAN/UPC - Product/Case	046677580278
Numerator - Packs per outer box	25
EAN/UPC - Case	50046677580273

Dimensional drawing



Product	D1	D2	A1	A2	A3
11.5T8/COR/48-840/IF21/G/DIM 25/1	1-1/16 inch	1-1/16 inch	47-3/16 inch	47-1/2 inch	47-3/4 inch

Photometric data

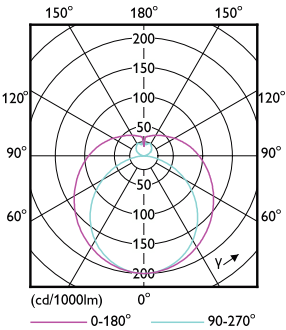


Spectral Power Distribution Colour - 11.5T8/COR/48-840/IF21/G/DIM 25/1

General uniform lighting - 11.5T8/COR/48-840/IF21/G/DIM 25/1

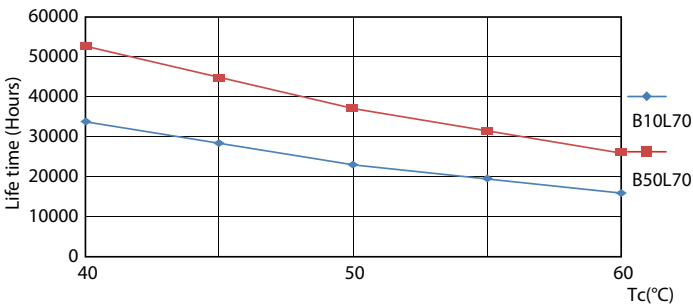
Corepro InstantFit (UL Type-A) T8

Photometric data

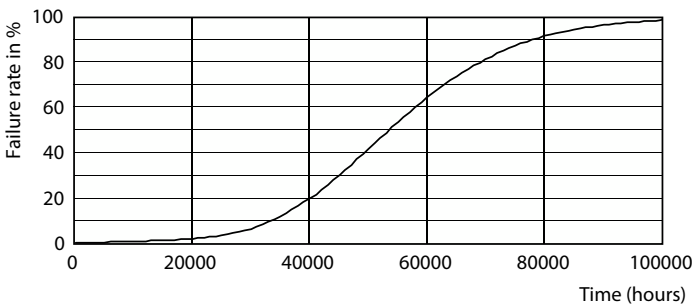


Light Distribution Diagram - 11.5T8/COR/48-840/IF21/G/DIM 25/1

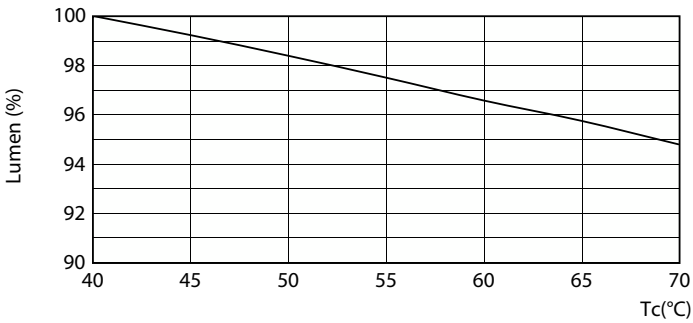
Lifetime



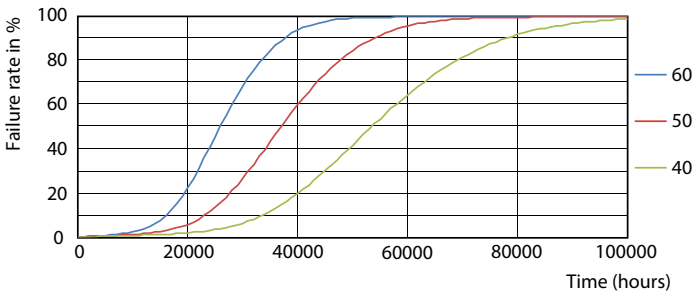
LifetimeVsTc



Life Expectancy Diagram



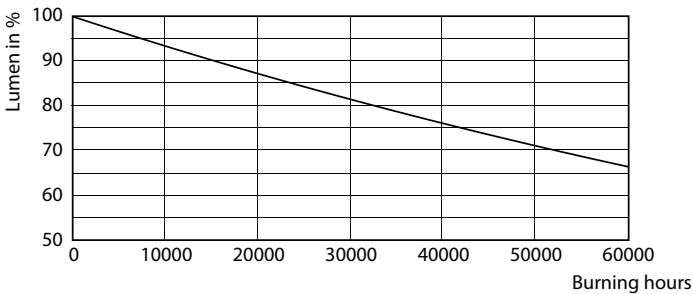
Lumen Maintenance Diagram - 11.5T8/COR/48-840/IF21/G/DIM 25/1



FailureRate

Corepro InstantFit (UL Type-A) T8

Lifetime



Lumen Maintenance Diagram - 11.5T8/COR/48-840/IF21/G/DIM 25/1

