



MasterClass MainsFit (UL Type-B) T8

14.5T8/MAS/48-850/MF21/P/DIM 25/1

Say hello to Philips MasterClass MainsFit (UL Type B) T8 lamps, Designed to be the perfect retrofit solution for traditional fluorescent lamps, they set the standard for performance, longevity (50,000 to 70,000 hours rate life) and efficacy (up to >190 lm/W). This ballast bypass lamp comes with everything needed built into the lamp, including surge suppression, proven energy savings, long life (up to 70k hours), and patented safety features. All lamps in the MasterClass MainsFit family are double-ended to simplify installation.

Product data

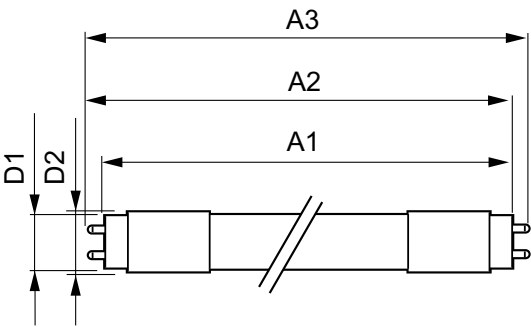
General Information		Operating and Electrical	
Cap-Base	G13 [Medium Bi-Pin Fluorescent]	Line Frequency	50 to 60 Hz
Nominal lifetime	70,000 hour(s)	Input Frequency	50 to 60 Hz
Switching Cycle	50,000	Power Consumption	14.5 W
Lighting Technology	LED	Lamp Current (Max)	125 mA
Light Technical		Lamp Current (Min)	58 mA
Color Code	850 [CCT of 5000K]	Wattage Equivalent	32 W
Beam Angle (Nom)	180 degree(s)	Starting Time (Nom)	0.5 s
Luminous Flux	2,100 lm	Warm-up time to 60% light	0.5 s
Color Designation	Daylight	Power Factor (Fraction)	0.9
Correlated Color Temperature (Nom)	5000 K	Voltage (Nom)	120-277 V
Luminous Efficacy (rated) (Nom)	144.00 lm/W	UL Type	UL Type B
Color Consistency	<5	Temperature	
Color rendering index (CRI)	80	T-Case Maximum (Nom)	158 °F
LLMF At End Of Nominal Lifetime (Nom)	70 %		

MasterClass MainsFit (UL Type-B) T8

Controls and Dimming	
Dimmable	Only with specific dimmers
Mechanical and Housing	
Bulb Finish	Frosted
Bulb Material	Plastic
Product Length	47-1/4 inch
Bulb Shape	T8
Net Weight (Piece)	0.463 lb
Approval and Application	
Energy Saving Product	Yes
Approval Marks	RoHS compliance UL certificate DLC compliance
EU RoHS compliant	Yes
Ambient temperature range	-4 °F to 113 °F

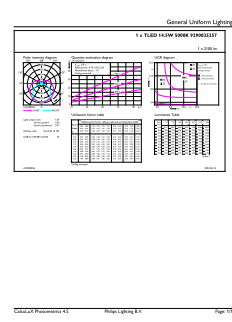
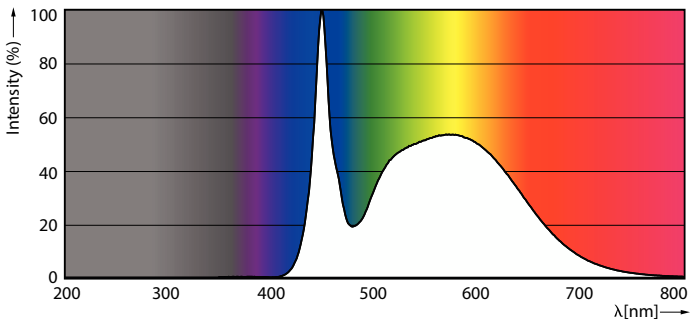
Application Conditions	
can it be used in closed luminaires	Yes
Product Data	
Order product name	14.5T8/MAS/48-850/MF21/P/DIM 25/1
Full product name	14.5T8/MAS/48-850/MF21/P/DIM 25/1
Order code	579508
Material Nr. (12NC)	929003525704
Numerator - Quantity Per Pack	1
EAN/UPC - Product/Case	046677579500
Numerator - Packs per outer box	25
EAN/UPC - Case	50046677579505

Dimensional drawing



Product	D1	D2	A1	A2	A3
14.5T8/MAS/48-850/MF21/P/DIM 25/1	1-1/16 inch	1-1/8 inch	47-3/16 inch	47-1/2 inch	47-3/4 inch

Photometric data

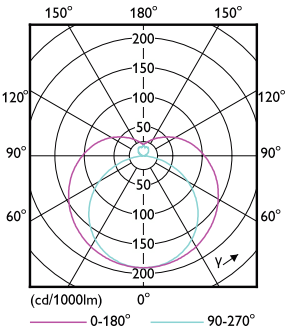


Spectral Power Distribution Colour - 14.5T8/MAS/48-850/MF21/P/DIM 25/1

General uniform lighting - 14.5T8/MAS/48-850/MF21/P/DIM 25/1

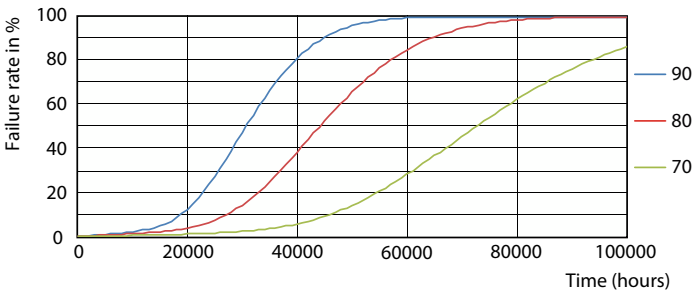
MasterClass MainsFit (UL Type-B) T8

Photometric data

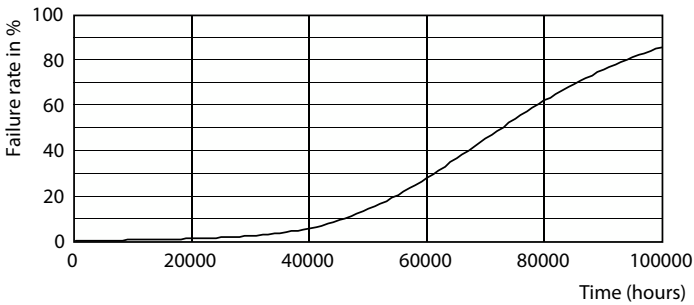


Light Distribution Diagram - 14.5T8/MAS/48-850/MF21/P/DIM 25/1

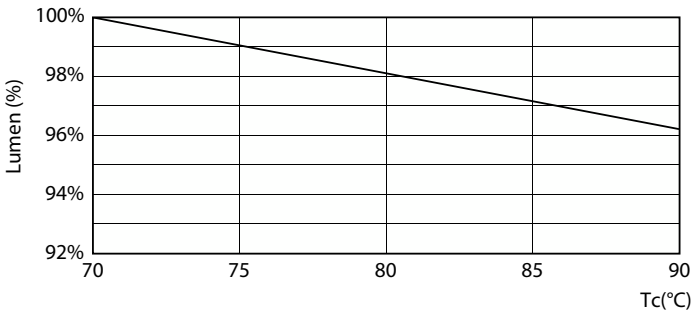
Lifetime



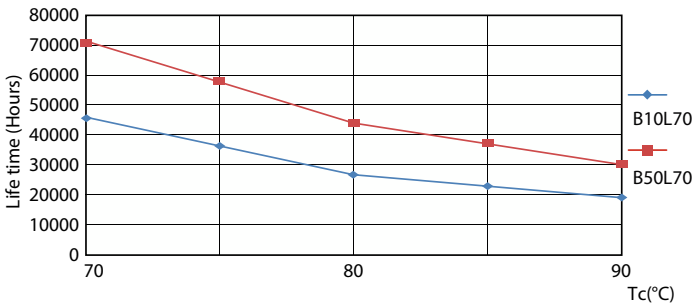
FailureRate



Life Expectancy Diagram



Lumen Maintenance Diagram - 14.5T8/MAS/48-850/MF21/P/DIM 25/1



LifetimeVsTc

MasterClass MainsFit (UL Type-B) T8

Lifetime



Lumen Maintenance Diagram - 14.5T8/MAS/48-850/MF21/P/DIM 25/1

