



Contractor-grade MainsFit (UL Type-B) T8

16.5T8/CNG/48-835/MF20/G 25/1

The Contractor-grade MainsFit (UL Type B) lamps are designed to provide simple retrofit solution to move from traditional fluorescent lamps to energy saving LEDs. This ballast bypass lamp is similar to other UL Type B lamps in the Philips family by providing proven energy savings, long life (50k hours), surge suppression and industry leading safety features. All lamps in the Contractor-grade family are also double-ended to help simplify the installation.

Product data

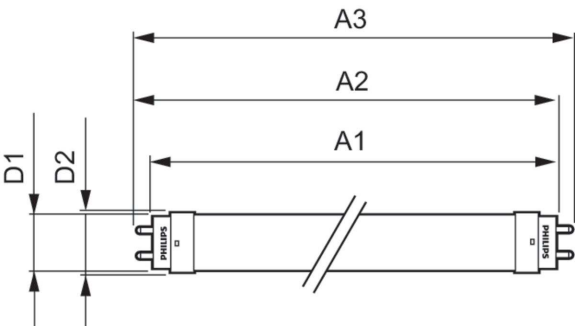
General Information		LLMF At End Of Nominal Lifetime (Nom) 70 %	
Cap-Base	G13 [Medium Bi-Pin Fluorescent]	Operating and Electrical	
Nominal lifetime	50,000 hour(s)	Line Frequency	50 to 60 Hz
Switching Cycle	50,000	Input Frequency	50 to 60 Hz
Lighting Technology	LED	Power Consumption	16.5 W
Light Technical		Lamp Current (Max)	134 mA
Color Code	835 [CCT of 3500K]	Lamp Current (Min)	58 mA
Beam Angle (Nom)	240 degree(s)	Wattage Equivalent	32 W
Luminous Flux	2,000 lm	Starting Time (Nom)	0.5 s
Color Designation	White (WH)	Warm-up time to 60% light	0.5 s
Correlated Color Temperature (Nom)	3500 K	Power Factor (Fraction)	0.9
Luminous Efficacy (rated) (Nom)	121.00 lm/W	Voltage (Nom)	120-277 V
Color Consistency	<6	UL Type	UL Type B
Color rendering index (CRI)	80		

Contractor-grade MainsFit (UL Type-B) T8

Temperature	
T-Case Maximum (Nom)	158 °F
Controls and Dimming	
Dimmable	Limited
Mechanical and Housing	
Bulb Finish	Frosted
Bulb Material	Glass
Product Length	47-1/4 inch
Bulb Shape	T8
Net Weight (Piece)	0.419 lb
Approval and Application	
Energy Saving Product	Yes
Approval Marks	RoHS compliance UL certificate DLC compliance

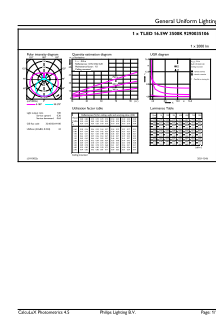
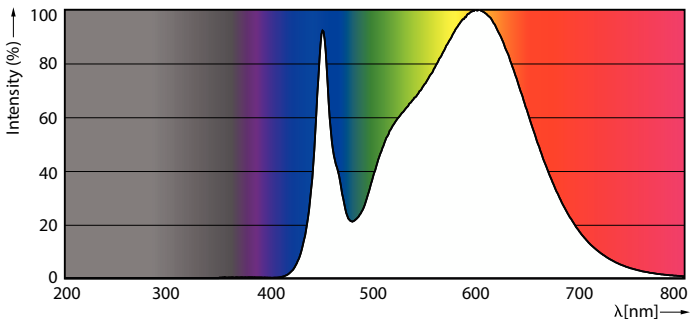
EU RoHS compliant	Yes
Ambient temperature range	-4 °F to 113 °F
Application Conditions	
can it be used in closed luminaires	Yes
Product Data	
Order product name	16.5T8/CNG/48-835/MF20/G 25/1
Full product name	16.5T8/CNG/48-835/MF20/G 25/1
Order code	579045
Material Nr. (12NC)	929003510604
Numerator - Quantity Per Pack	1
EAN/UPC - Product/Case	046677579043
Numerator - Packs per outer box	25
EAN/UPC - Case	50046677579048

Dimensional drawing



Product	D1	D2	A1	A2	A3
16.5T8/CNG/48-835/MF20/G 25/1	1-1/16 inch	1-1/8 inch	47-3/16 inch	47-1/2 inch	47-3/4 inch

Photometric data

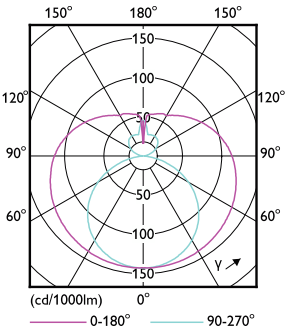


Spectral Power Distribution Colour - 16.5T8/CNG/48-835/MF20/G 25/1

General uniform lighting - 16.5T8/CNG/48-835/MF20/G 25/1

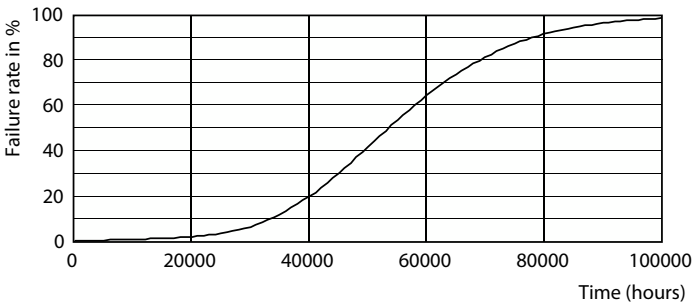
Contractor-grade MainsFit (UL Type-B) T8

Photometric data

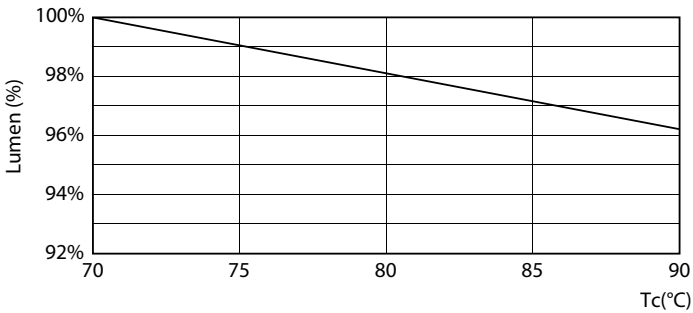


Light Distribution Diagram - 16.5T8/CNG/48-835/MF20/G 25/1

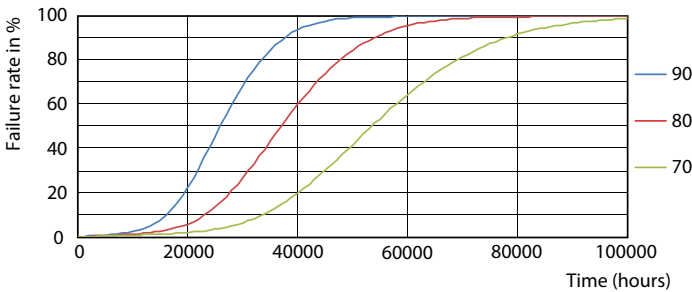
Lifetime



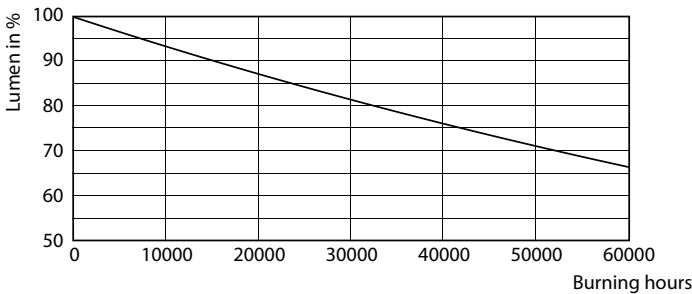
Life Expectancy Diagram



Lumen Maintenance Diagram - 16.5T8/CNG/48-835/MF20/G 25/1



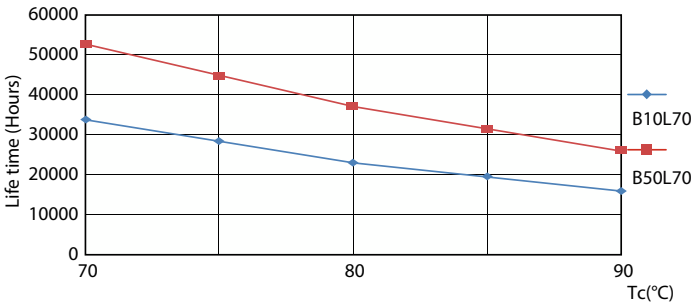
LEDtube 50K 7090 FailureRate-LED



Lumen Maintenance Diagram - 16.5T8/CNG/48-835/MF20/G 25/1

Contractor-grade MainsFit (UL Type-B) T8

Lifetime



LifetimeVsTc

