



# MainsFit (UL Type-B) T5

## 25T5HO/COR/46-850/MF35/G 25/1

The MainsFit (UL Type-B) lamps are designed to be the perfect retrofit solution to move from traditional fluorescent lamps to energy saving LEDs. This ballast bypass lamp has everything needed built into the lamp with proven energy savings, long life, surge suppression and industry leading safety features. All lamps in the MainsFit family are double-ended to help simplify the installation. In addition, all lamps meet the Philips standards for light quality so that end users will be in a comfortable environment regardless of the MainsFit lamp type.

### Product data

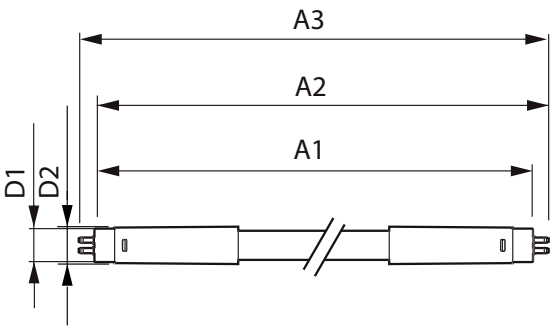
General Information		Operating and Electrical	
Cap-Base	G5	Line Frequency	50 to 60 Hz
Nominal lifetime	50,000 hour(s)	Input Frequency	50 to 60 Hz
Switching Cycle	50,000	Power Consumption	25 W
Lighting Technology	LED	Lamp Current (Max)	250 mA
Light Technical		Lamp Current (Min)	95 mA
Color Code	850 [CCT of 5000K]	Wattage Equivalent	54 W
Beam Angle (Nom)	200 degree(s)	Starting Time (Nom)	0.5 s
Luminous Flux	3,500 lm	Warm-up time to 60% light	0.5 s
Color Designation	Daylight	Power Factor (Fraction)	0.9
Correlated Color Temperature (Nom)	5000 K	Voltage (Nom)	120-277 V
Luminous Efficacy (rated) (Nom)	140.00 lm/W	UL Type	UL Type B
Color Consistency	<5	Temperature	
Color rendering index (CRI)	80	T-Case Maximum (Nom)	167 °F
LLMF At End Of Nominal Lifetime (Nom)	70 %		

MainsFit (UL Type-B) T5

Controls and Dimming	
Dimmable	Limited
Mechanical and Housing	
Bulb Finish	Frosted
Bulb Material	Glass
Product Length	47-1/4 inch
Bulb Shape	T5
Net Weight (Piece)	0.333 lb
Approval and Application	
Energy Saving Product	Yes
Approval Marks	RoHS compliance UL certificate DLC compliance
EU RoHS compliant	Yes
Ambient temperature range	-4 °F to 113 °F

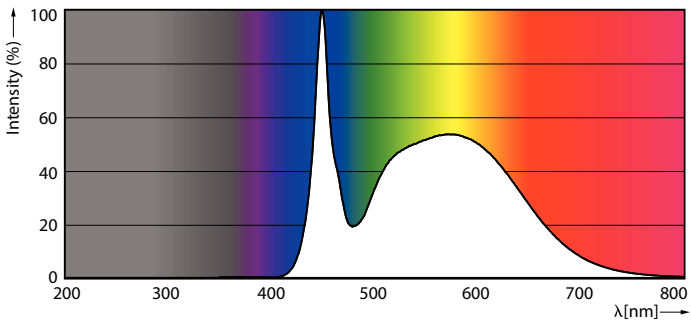
Application Conditions	
can it be used in closed luminaires	Yes
Product Data	
Order product name	25T5HO/COR/46-850/MF35/G 25/1
Full product name	25T5HO/COR/46-850/MF35/G 25/1
Order code	576256
Material Nr. (12NC)	929003122604
Numerator - Quantity Per Pack	1
EAN/UPC - Product/Case	046677576257
Numerator - Packs per outer box	25
EAN/UPC - Case	50046677576252

Dimensional drawing

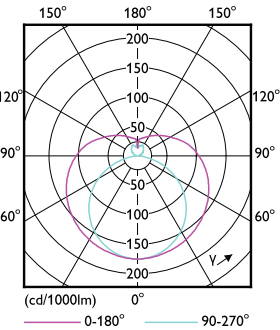


Product	D1	D2	A1	A2	A3
25T5HO/COR/46-850/MF35/G 25/1	5/8 inch	3/4 inch	45-1/4 inch	45-1/2 inch	45-13/16 inch

Photometric data



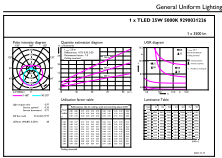
Spectral Power Distribution Colour - 25T5HO/COR/46-850/MF35/G 25/1



Light Distribution Diagram - 25T5HO/COR/46-850/MF35/G 25/1

MainsFit (UL Type-B) T5

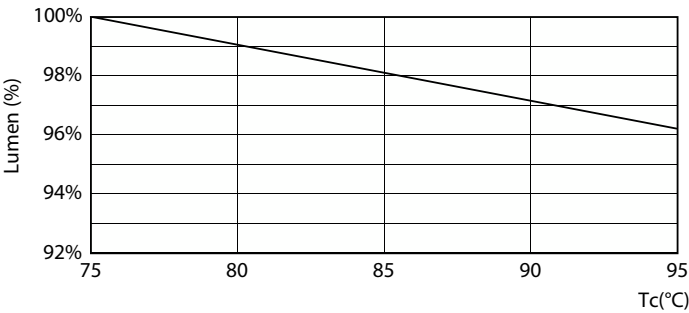
Photometric data



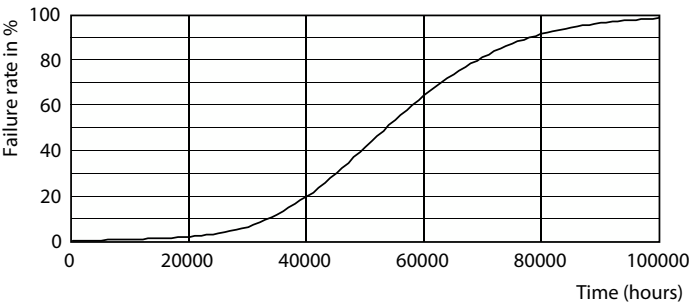
General Uniform Lighting - 25T5HO/COR/46-850/MF35/G 25/1

General uniform lighting - 25T5HO/COR/46-850/MF35/G 25/1

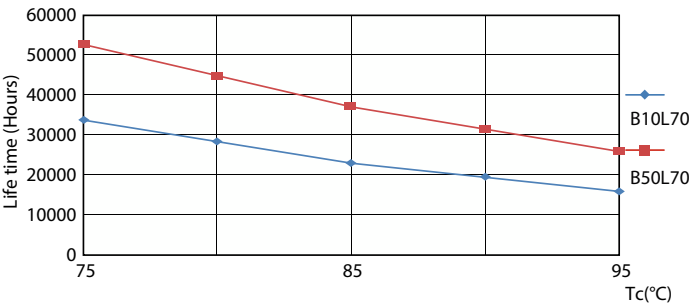
Lifetime



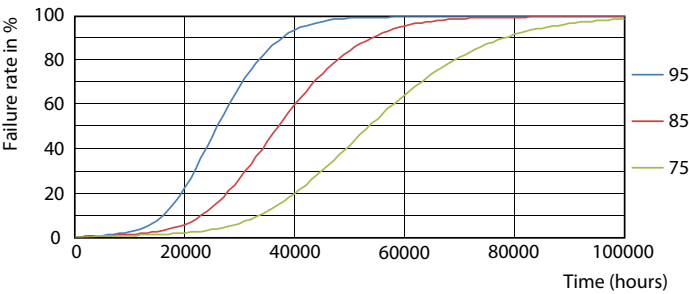
Lumen Maintenance Diagram - 25T5HO/COR/46-850/MF35/G 25/1



Life Expectancy Diagram



LEDtube 50K 7595 LifetimeVsTc-LED



LEDtube 50K 7595 FailureRate-LED

## MainsFit (UL Type-B) T5

