



MainsFit (UL Type-B) T5

14T5HE/COR/46-835/MF20/G 25/1

The MainsFit (UL Type-B) lamps are designed to be the perfect retrofit solution to move from traditional fluorescent lamps to energy saving LEDs. This ballast bypass lamp has everything needed built into the lamp with proven energy savings, long life, surge suppression and industry leading safety features. All lamps in the MainsFit family are double-ended to help simplify the installation. In addition, all lamps meet the Philips standards for light quality so that end users will be in a comfortable environment regardless of the MainsFit lamp type.

Product data

General Information	
Cap-Base	G5
Nominal lifetime	50,000 hour(s)
Switching Cycle	50,000
Lighting Technology	LED
Light Technical	
Color Code	835 [CCT of 3500K]
Beam Angle (Nom)	200 degree(s)
Luminous Flux	2,000 lm
Color Designation	White (WH)
Correlated Color Temperature (Nom)	3500 K
Luminous Efficacy (rated) (Nom)	142.00 lm/W
Color Consistency	<6
Color rendering index (CRI)	80
LLMF At End Of Nominal Lifetime (Nom)	70 %

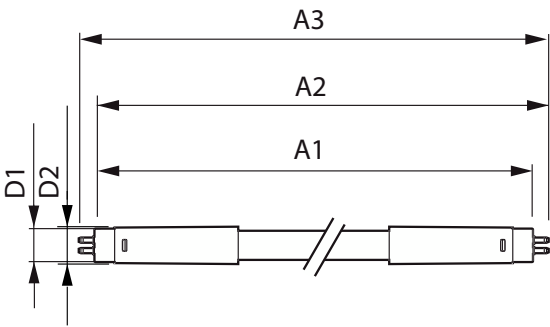
Operating and Electrical	
Line Frequency	50 to 60 Hz
Input Frequency	50 to 60 Hz
Power Consumption	14 W
Lamp Current (Max)	145 mA
Lamp Current (Min)	55 mA
Wattage Equivalent	28 W
Starting Time (Nom)	0.5 s
Warm-up time to 60% light	0.5 s
Power Factor (Fraction)	0.9
Voltage (Nom)	120-277 V
UL Type	UL Type B
Temperature	
T-Case Maximum (Nom)	158 °F

MainsFit (UL Type-B) T5

Controls and Dimming	
Dimmable	Limited
Mechanical and Housing	
Bulb Finish	Frosted
Bulb Material	Glass
Product Length	47-1/4 inch
Bulb Shape	T5
Net Weight (Piece)	0.333 lb
Approval and Application	
Energy Saving Product	Yes
Approval Marks	RoHS compliance UL certificate DLC compliance
EU RoHS compliant	Yes
Ambient temperature range	-4 °F to 113 °F

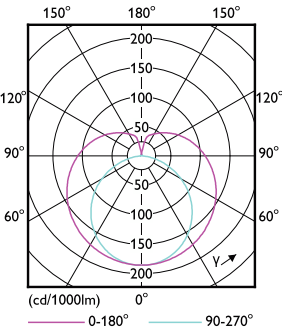
Application Conditions	
can it be used in closed luminaires	Yes
Product Data	
Order product name	14T5HE/COR/46-835/MF20/G 25/1
Full product name	14T5HE/COR/46-835/MF20/G 25/1
Order code	576207
Material Nr. (12NC)	929003123304
Numerator - Quantity Per Pack	1
EAN/UPC - Product/Case	046677576202
Numerator - Packs per outer box	25
EAN/UPC - Case	50046677576207

Dimensional drawing

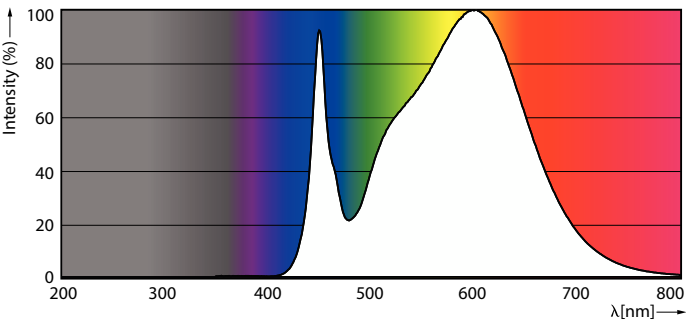


Product	D1	D2	A1	A2	A3
14T5HE/COR/46-835/ MF20/G 25/1	5/8 inch	3/4 inch	45-1/4 inch	45-1/2 inch	45-13/16 inch

Photometric data



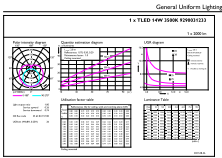
Light Distribution Diagram - 14T5HE/COR/46-835/MF20/G 25/1



Spectral Power Distribution Colour - 14T5HE/COR/46-835/MF20/G 25/1

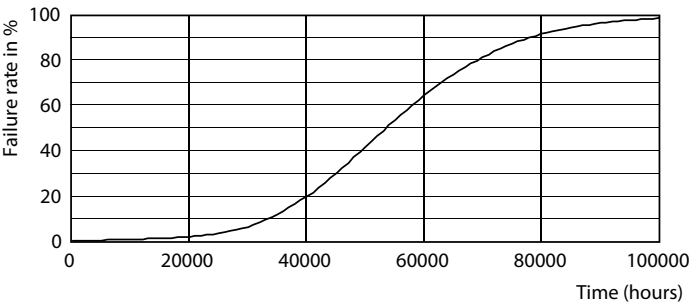
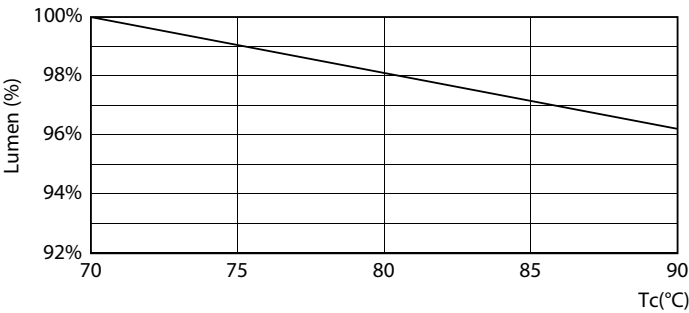
MainsFit (UL Type-B) T5

Photometric data



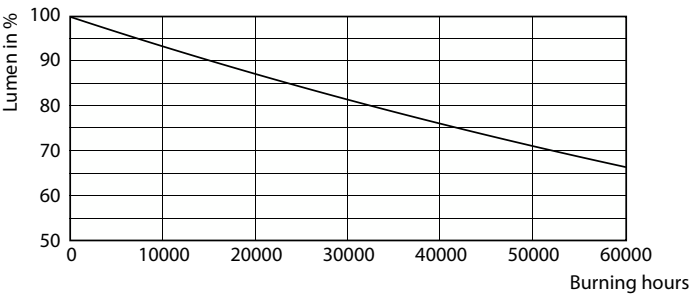
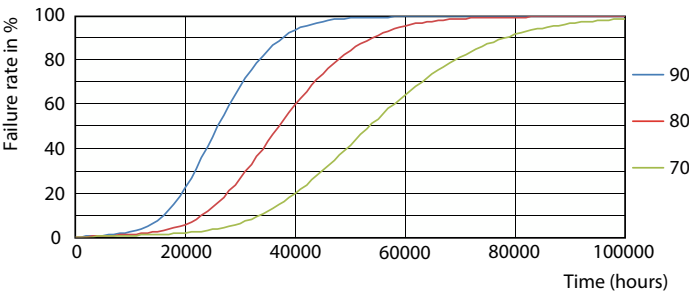
General uniform lighting - 14T5HE/COR/46-835/MF20/G 25/1

Lifetime



Lumen Maintenance Diagram - 14T5HE/COR/46-835/MF20/G 25/1

Life Expectancy Diagram

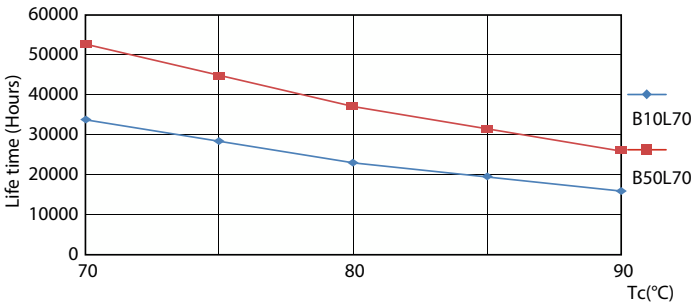


LEDtube 50K 7090 FailureRate-LED

Lumen Maintenance Diagram - 14T5HE/COR/46-835/MF20/G 25/1

MainsFit (UL Type-B) T5

Lifetime



LifetimeVsTc

