



LED Corn Cobs

36CC/LED/830/LS EX39 G3 BB 3/1

Philips Corn Cob LED replacement lamps are perfect LED replacement for a variety of outdoor applications. High intensity illumination, which means you get added visibility for applications like streets, public areas, and much more for a fraction of the energy used by conventional HID.

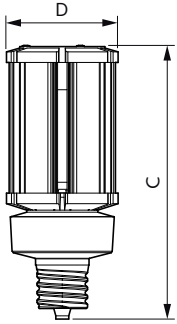
Product data

General information	
Cap-Base	EX39 [Exclusionary Mogul Screw]
EU RoHS compliant	Yes
Nominal Lifetime (Nom)	50000 h
Switching Cycle	50000X
Light technical	
Color Code	830 [CCT of 3000K]
Luminous Flux (Nom)	5000 lm
Color Designation	White (WH)
Correlated Color Temperature (Nom)	3000 K
Luminous Efficacy (rated) (Nom)	138.00 lm/W
Color Consistency	ANSI 3000K quadrangle
Color Rendering Index (Nom)	80
LLMF At End Of Nominal Lifetime (Nom)	70 %
Operating and electrical	
Input Frequency	50 to 60 Hz
Power (Rated) (Nom)	36 W
Lamp Current (Nom)	400 mA
Wattage Equivalent	150 W
Starting Time (Nom)	1 s
Warm Up Time to 60% Light (Nom)	1 s

UL Type	Type B - bypass the ballast
Power Factor (Nom)	0.9
Voltage (Nom)	100-277 V
Temperature	
T-Case Maximum (Nom)	60 °C
Controls and dimming	
Dimmable	Preset Dimming
Mechanical and housing	
Bulb Finish	Clear
Bulb Material	Plastic
Bulb Shape	Corncob
Product data	
Order product name	36CC/LED/830/LS EX39 G3 BB 3/1
EAN/UPC - Product	046677564124
Order code	564120
Numerator - Quantity Per Pack	1
Numerator - Packs per outer box	3
Material Nr. (12NC)	929002998904
Net Weight (Piece)	0.655 kg

LED Corn Cobs

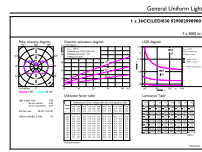
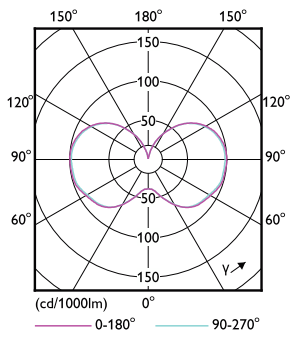
Dimensional drawing



36CC/LED/830/LS EX39 G3 BB 3/1

Product	D	C
36CC/LED/830/LS EX39 G3 BB 3/1	85 mm	215 mm

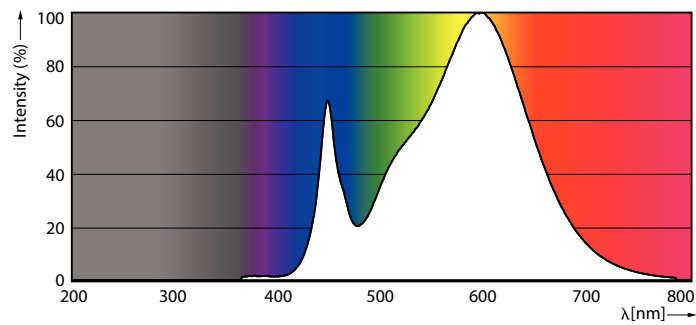
Photometric data



General Uniform Light
1 SUCCESSOR ENGINEERING
L1 830 G3
Date of Revision: 01/2022
Page 1/1

LEDForce LS EX39 36W Corncob EX39-LDD

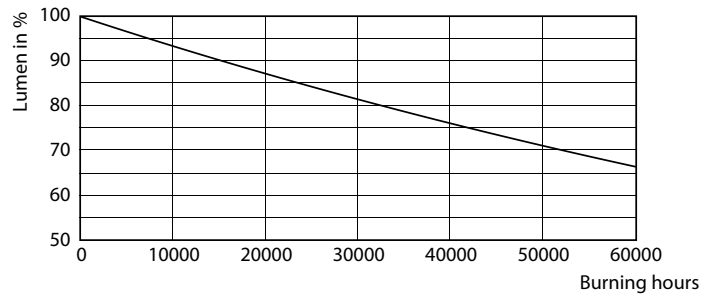
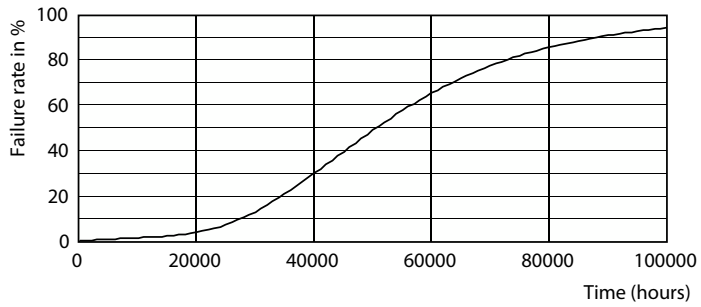
LEDForce LS EX39 36W Corncob EX39 830-GUL



LEDForce LS EX39 36W Corncob EX39 830-POC

LED Corn Cobs

Lifetime



50K

50K

