

MasterConnect T8

14.5T8/48-850/MF21/MC IA 10/1

Introducing MasterConnect LED lamps - smart retrofit LED lamps that give you an easy and seamless way to upgrade to connected lighting. Simply set up with an intuitive app, MasterConnect LED lamps can be programmed to maximize energy savings, while providing wireless and automated light for your comfort and convenience. What's more, it is fully scalable and upgradable. If you want to enjoy further benefits such as remote control or management dashboard, you can simply keep the currently installed lamps and add a gateway to experience all the advantages of a cloud-based system. There's no better way to take lighting solutions to the next level.

Product data

General Information	
Cap-Base	G13 ROT
Nominal lifetime	70,000 hour(s)
Switching Cycle	50,000
Lighting Technology	LED
Light Technical	
Color Code	850 [CCT of 5000K]
Beam Angle (Nom)	160 degree(s)
Luminous Flux	2,100 lm
Color Designation	Daylight
Correlated Color Temperature (Nom)	5000 K
Luminous Efficacy (rated) (Nom)	144.00 lm/W
Color Consistency	<5
Color rendering index (CRI)	82
LLMF At End Of Nominal Lifetime (Nom)	70 %

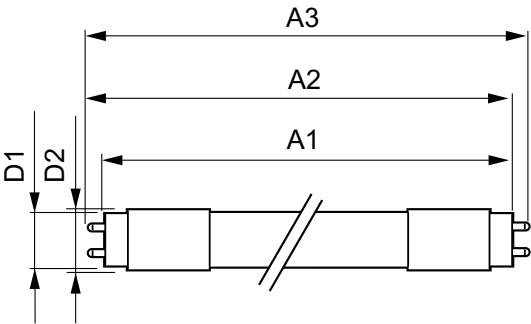
Operating and Electrical	
Line Frequency	50 to 60 Hz
Input Frequency	50 to 60 Hz
Power Consumption	14.5 W
Lamp Current (Max)	125 mA
Lamp Current (Min)	59 mA
Wattage Equivalent	32 W
Starting Time (Nom)	1 s
Warm-up time to 60% light	0.5 s
Power Factor (Fraction)	0.9
Voltage (Nom)	120-277 V
UL Type	UL Type B
Temperature	
T-Case Maximum (Nom)	113 °F

MasterConnect T8

Controls and Dimming	
Dimmable	Wireless Dim
Mechanical and Housing	
Bulb Finish	Frosted
Bulb Material	Plastic
Product Length	47-1/4 inch
Bulb Shape	T8
Net Weight (Piece)	0.485 lb
Approval and Application	
Energy Saving Product	Yes
Approval Marks	RoHS compliance UL certificate DLC compliance
Energy Consumption kWh/1000 h	- kWh
EU RoHS compliant	Yes

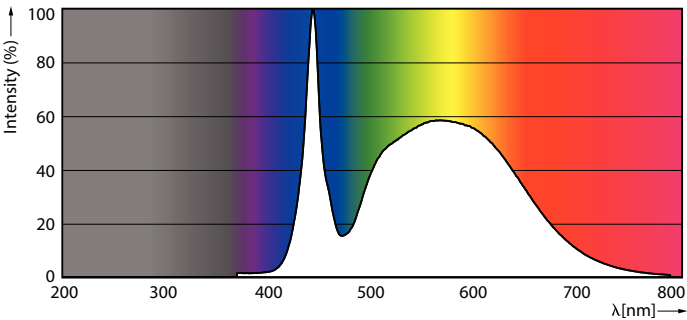
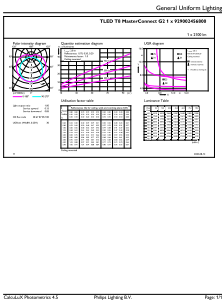
Ambient temperature range	-4 °F to 113 °F
Application Conditions	
can it be used in closed luminaires	Yes
Product Data	
Order product name	14.5T8/48-850/MF21/MC IA 10/1
Full product name	14.5T8/48-850/MF21/MC IA 10/1
Order code	562751
Material Nr. (12NC)	929002456804
Numerator - Quantity Per Pack	1
EAN/UPC - Product/Case	046677562755
Numerator - Packs per outer box	10
EAN/UPC - Case	50046677562750

Dimensional drawing



Product	D1	D2	A1	A2	A3
14.5T8/48-850/MF21/MC IA 10/1	1-1/16 inch	1-1/8 inch	47-3/16 inch	47-1/2 inch	47-3/4 inch

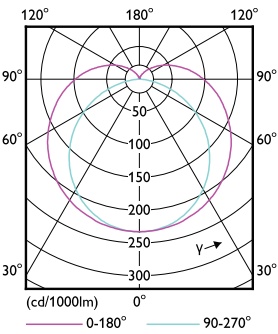
Photometric data



General uniform lighting - 14.5T8/48-850/MF21/MC IA 10/1

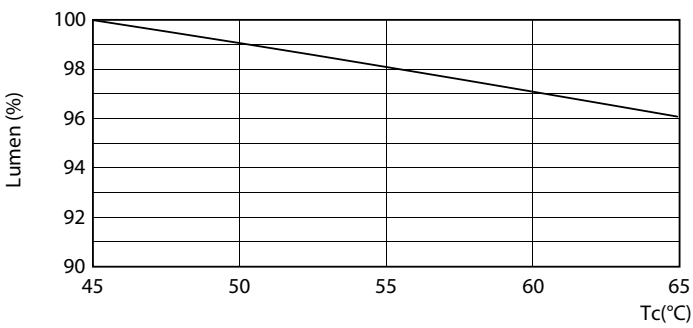
Spectral Power Distribution Colour - 14.5T8/48-850/MF21/MC IA 10/1

Photometric data

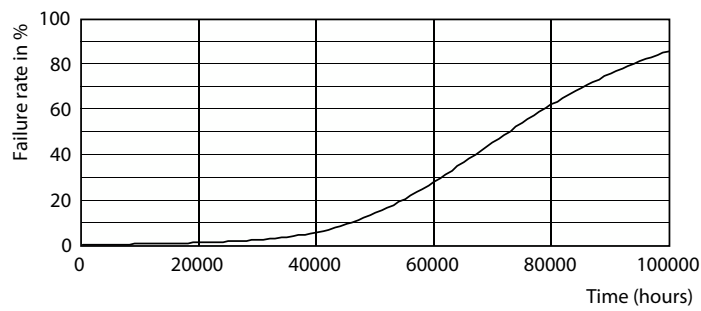


Light Distribution Diagram - 14.5T8/48-850/MF21/MC IA 10/1

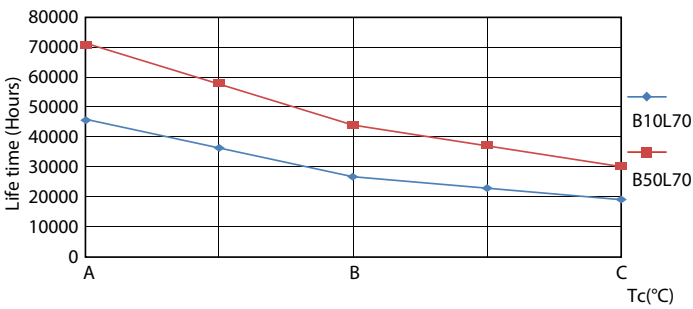
Lifetime



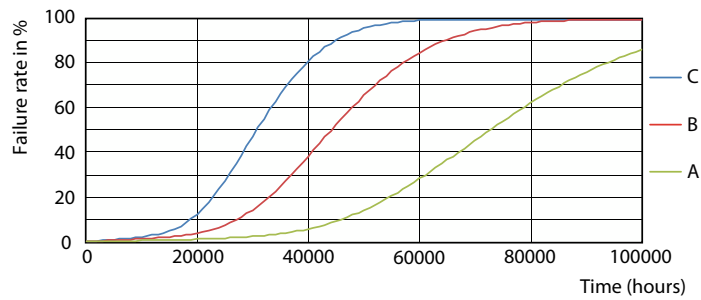
Lumen Maintenance Diagram - 14.5T8/48-850/MF21/MC IA 10/1



Life Expectancy Diagram



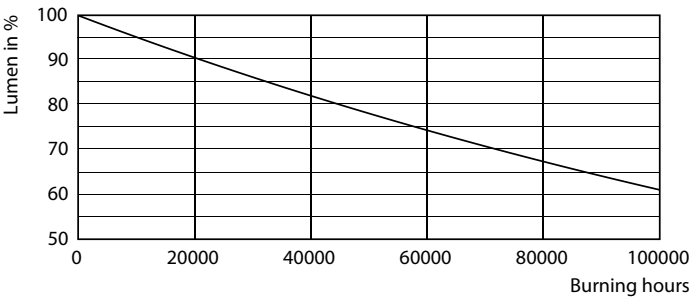
LEDtube_70K_LifetimeVsTc-LED



LEDtube_70K_FailureRate-LED

MasterConnect T8

Lifetime



Lumen Maintenance Diagram - 14.5T8/48-850/MF21/MC IA 10/1

