

T8

10T8/COR/48-840/IF16/G 10/1

Our TLEDs are available in InstantFit (Type A / Type C) or MainsFit (Ballast bypass / Type B) versions. The InstantFit lamps work on a broad variety of ballasts and LED drivers. Only InstantFit has over 15,000 lamp & ballast combinations delivering even light output, energy savings and a long lifetime. Our MainsFit products feature a double-ended design, simplifying installation while a proprietary safety circuit minimizes a shock risk. Lamp sizes range from 2-foot to 8-foot and U-bend with a variety of lumen outputs.

Product data

General Information	
Base	G13 [Medium Bi-Pin Fluorescent]
EU RoHS compliant	Yes
Main Application	Indoor
Nominal Lifetime (Nom)	50000 h
Switching Cycle	50000X
Light Technical	
Color Code	841 [CCT of 4100K (841)]
Initial lumen (Nom)	1600 lm
Luminous Flux (Rated) (Nom)	1600 lm
Correlated Color Temperature (Nom)	4000 K
Luminous Efficacy (rated) (Nom)	160.00 lm/W
Color Consistency	<6
Color Rendering Index (Nom)	82
LLMF At End Of Nominal Lifetime (Nom)	70 %
Operating and Electrical	
Input Frequency	25000-105000 Hz
Power (Rated) (Nom)	10 W

Lamp Current (Max)	260 mA
Lamp Current (Min)	100 mA
Starting Time (Nom)	0.5 s
Warm Up Time to 60% Light (Nom)	0.5 s
Power Factor (Nom)	0.9
Voltage (Nom)	120-277, 347 V
Temperature	
T-Ambient (Max)	45 °C
T-Ambient (Min)	-20 °C
T-Storage (Max)	65 °C
T-Storage (Min)	-40 °C
T-Case Maximum (Nom)	50 °C
Controls and Dimming	
Dimmable	No
Mechanical and Housing	
Product Length	1200 mm

T8

Approval and Application

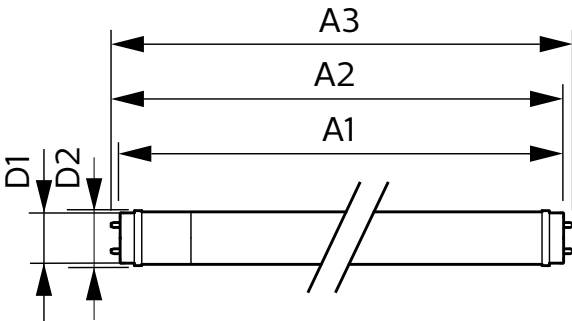
Energy Saving Product	Yes
Approbation Marks	RoHS compliance UL certificate DLC compliance

Product Data

XUCDM.COPY.Product.Title	10T8/COR/48-840/IF16/G 10/1
EAN/UPC - Product	046677553234

Order code	553230
Numerator - Quantity Per Pack	1
Numerator - Packs per outer box	10
Material Nr. (12NC)	929001991734
Net Weight (Piece)	0.230 kg
Model Number	9290019917

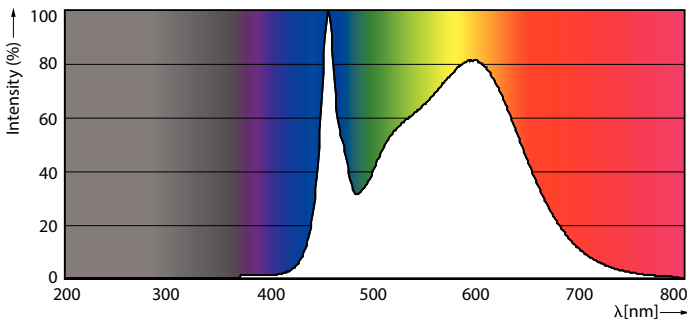
Dimensional drawing



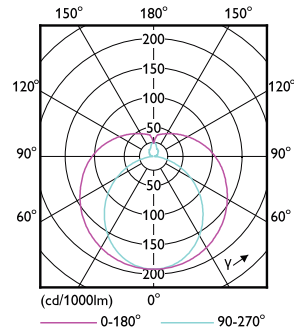
TLED 1200mmT8 120-277 10.5W 1650lm 4000K

Product	D1	D2	A1	A2	A3
10T8/COR/48-840/IF16/G 10/1	25.7 mm	28 mm	1198.1 mm	1205.2 mm	1212.3 mm

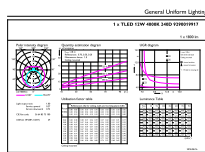
Photometric data



LEDtube 10W G13 840 ND

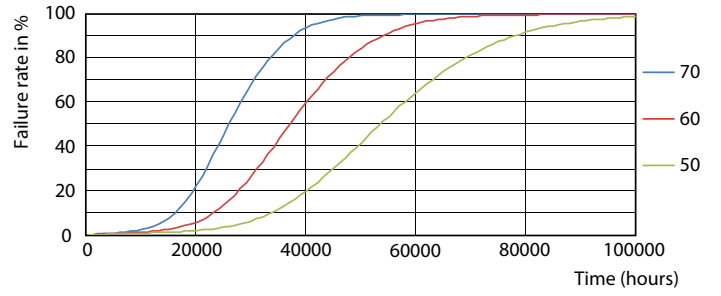
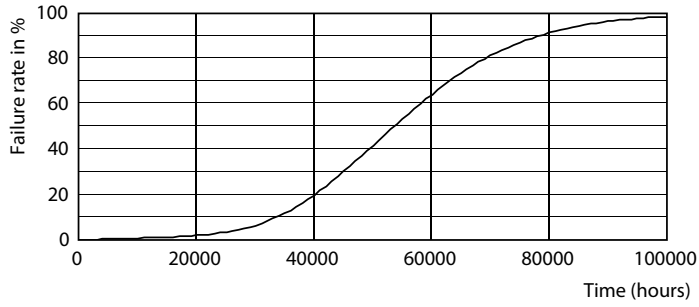


LEDtube 10W G13 840 ND



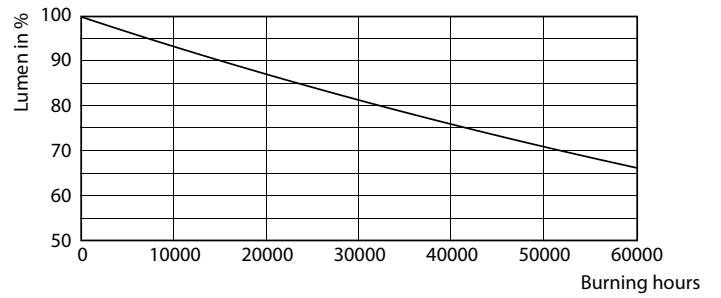
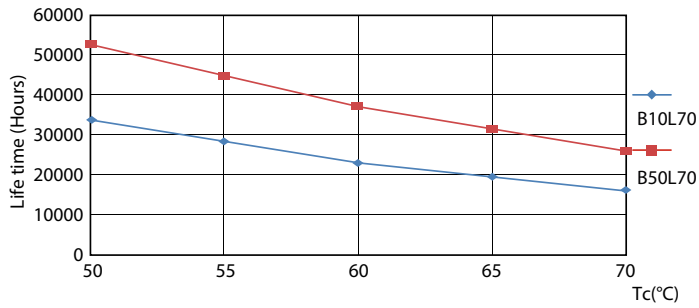
LEDtube 10W G13 840 ND

Lifetime



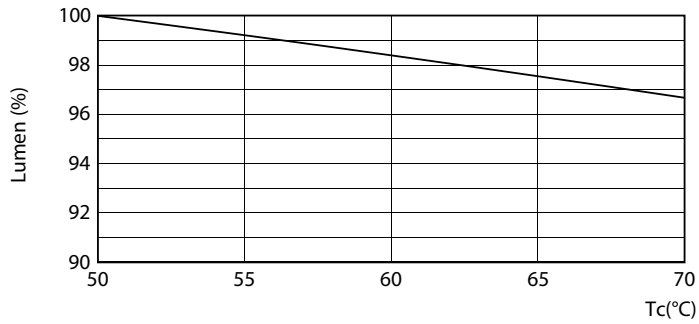
LEDtube 10W G13 850 ND

LEDtube 10W G13 850 ND



LEDtube 10W G13 850 ND

LEDtube 10W G13 850 ND



LEDtube 10W G13 850 ND

