



T8

44T8HO/COR/96-840/MF54/G/R17d 10/1

Our TLEDs are available in InstantFit (Type A / Type C) or MainsFit (Ballast bypass / Type B) versions. The InstantFit lamps work on a broad variety of ballasts and LED drivers. Only InstantFit has over 15,000 lamp & ballast combinations delivering even light output, energy savings and a long lifetime. Our MainsFit products feature a double-ended design, simplifying installation while a proprietary safety circuit minimizes a shock risk. Lamp sizes range from 2-foot to 8-foot and U-bend with a variety of lumen outputs.

Product data

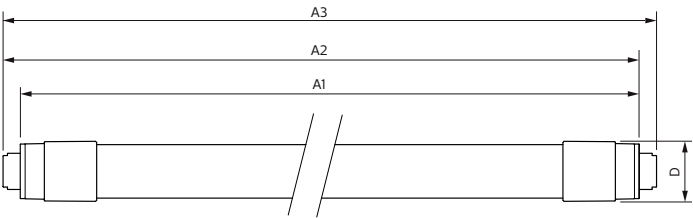
General Information	
Base	R17D [R17d (RDC)]
EU RoHS compliant	Yes
Nominal Lifetime (Nom)	50000 h
Switching Cycle	50000X
Light Technical	
Color Code	841 [CCT of 4100K (841)]
Beam Angle (Nom)	240 °
Initial lumen (Nom)	5400 lm
Luminous Flux (Rated) (Nom)	5400 lm
Correlated Color Temperature (Nom)	4000 K
Color Consistency	<6
Color Rendering Index (Nom)	82
LLMF At End Of Nominal Lifetime (Nom)	70 %
Operating and Electrical	
Input Frequency	50 to 60 Hz
Power (Rated) (Nom)	44 W
Lamp Current (Max)	375 mA

Lamp Current (Min)	168 mA
Starting Time (Nom)	0.5 s
Warm Up Time to 60% Light (Nom)	0.5 s
Power Factor (Nom)	0.9
Voltage (Nom)	120-277 V
Temperature	
T-Ambient (Max)	45 °C
T-Ambient (Min)	-20 °C
T-Storage (Max)	65 °C
T-Storage (Min)	-40 °C
T-Case Maximum (Nom)	55 °C
Controls and Dimming	
Dimmable	No
Mechanical and Housing	
Product Length	2400 mm

Approval and Application	
Energy Saving Product	Yes
Approbation Marks	RoHS compliance UL certificate DLC compliance
Product Data	
XUCDM.COPY.Product.Title	44T8HO/COR/96-840/MF54/G/R17d 10/1
EAN/UPC - Product	046677545284

Order code	545285
Numerator - Quantity Per Pack	1
Numerator - Packs per outer box	10
Material Nr. (12NC)	929002014204
Net Weight (Piece)	0.740 kg
Model Number	9290020142

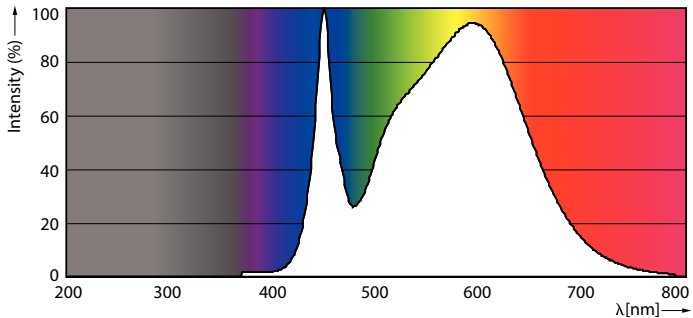
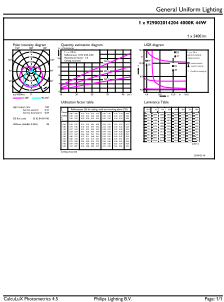
Dimensional drawing



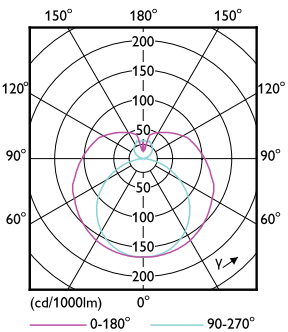
Product	D1	D2	A1	A2	A3
44T8HO/COR/96-840/MF54/G/R17d 10/1	28 mm	27.8 mm	2369.8 mm	2378.7 mm	2387.8 mm

TLED MF CorePro 8ft 5400lm R17d 4000K

Photometric data



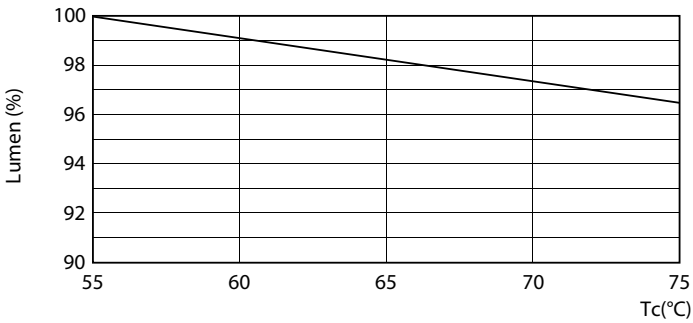
LEDtube R17D 4000K 240D



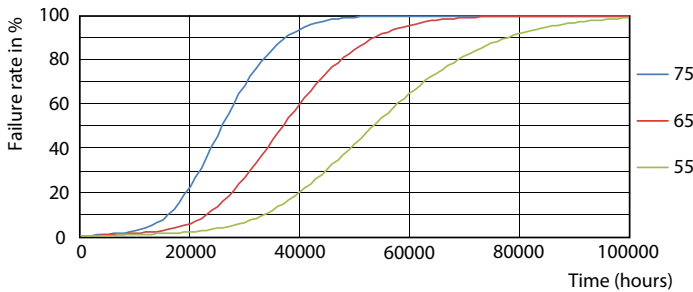
LEDtube FA8 4000K 240D

LEDtube FA8 4000K 240D

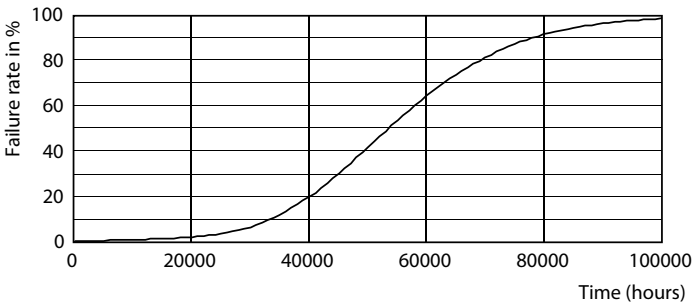
Lifetime



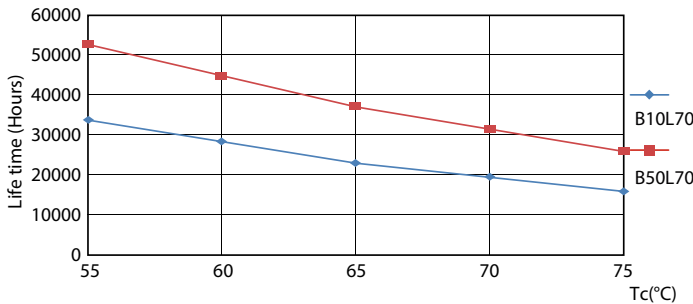
LEDtube R17D 4000K 240D LumenVsTc



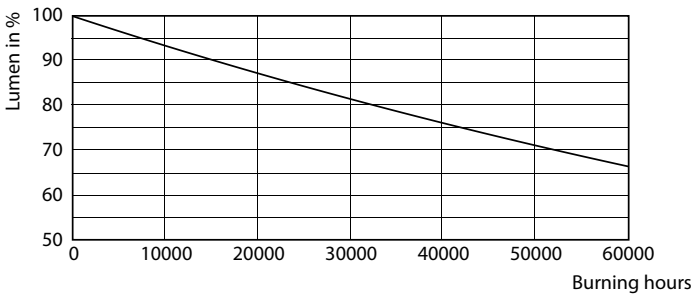
LEDtube R17D 4000K 240D FailureRate



LEDtube FA8 4000K 240D



LEDtube R17D 4000K 240D LifetimeVsTc



LEDtube FA8 4000K 240D

