



T8

34T8/COR/96-850/MF42/G/FA8 10/1

Our TLEDs are available in InstantFit (Type A / Type C) or MainsFit (Ballast bypass / Type B) versions. The InstantFit lamps work on a broad variety of ballasts and LED drivers. Only InstantFit has over 15,000 lamp & ballast combinations delivering even light output, energy savings and a long lifetime. Our MainsFit products feature a double-ended design, simplifying installation while a proprietary safety circuit minimizes a shock risk. Lamp sizes range from 2-foot to 8-foot and U-bend with a variety of lumen outputs.

Product data

General Information	
Base	FA8 [FA8]
EU RoHS compliant	Yes
Nominal Lifetime (Nom)	50000 h
Switching Cycle	50000X
Light Technical	
Color Code	850 [CCT of 5000K]
Beam Angle (Nom)	240 °
Initial lumen (Nom)	4200 lm
Luminous Flux (Rated) (Nom)	4200 lm
Correlated Color Temperature (Nom)	5000 K
Color Consistency	<5
Color Rendering Index (Nom)	82
LLMF At End Of Nominal Lifetime (Nom)	70 %
Operating and Electrical	
Input Frequency	50 to 60 Hz
Power (Rated) (Nom)	34 W
Lamp Current (Max)	290 mA

Lamp Current (Min)	133 mA
Starting Time (Nom)	0.5 s
Warm Up Time to 60% Light (Nom)	0.5 s
Power Factor (Nom)	0.9
Voltage (Nom)	120-277 V

Temperature	
T-Ambient (Max)	45 °C
T-Ambient (Min)	-20 °C
T-Storage (Max)	65 °C
T-Storage (Min)	-40 °C
T-Case Maximum (Nom)	45 °C

Controls and Dimming	
Dimmable	No

Mechanical and Housing	
Product Length	2400 mm

Approval and Application

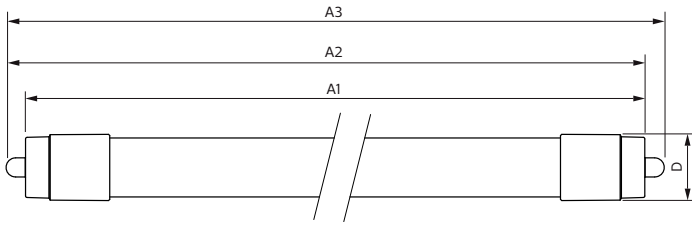
Energy Saving Product	Yes
Approbation Marks	RoHS compliance UL certificate DLC compliance

Product Data

XUCDM.COPY.Product.Title	34T8/COR/96-850/MF42/G/FA8 10/1
EAN/UPC - Product	046677545277

Order code	545277
Numerator - Quantity Per Pack	1
Numerator - Packs per outer box	10
Material Nr. (12NC)	929002014104
Net Weight (Piece)	0.740 kg
Model Number	9290020141

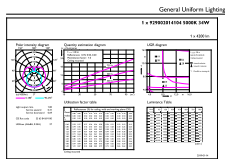
Dimensional drawing



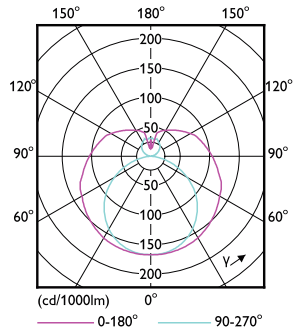
Product	D1	D2	A1	A2	A3
34T8/COR/96-850/ MF42/G/FA8 10/1	28 mm	27.9 mm	2369.8 mm	2378.7 mm	2387.8 mm

TLED MF CorePro 8ft 4200lm FA8 5000K

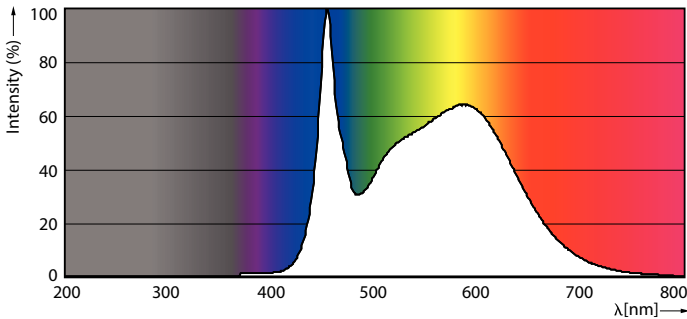
Photometric data



©2020 Phosoronic LLC | Phos Lighting LLC | Page 11



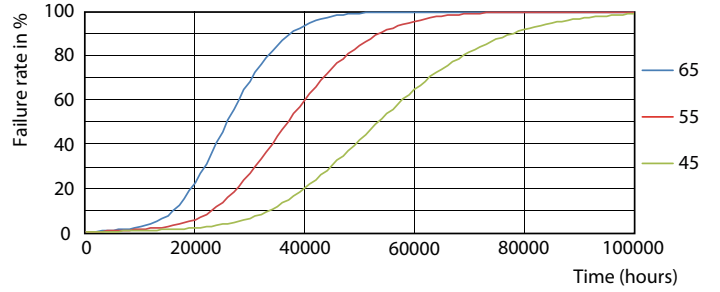
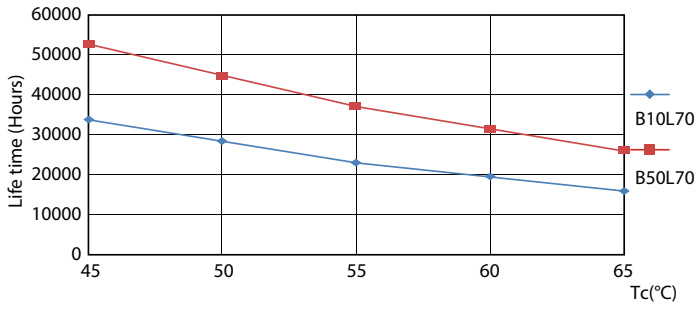
LEDtube FA8 5000K 240D



LEDtube FA8 5000K 240D

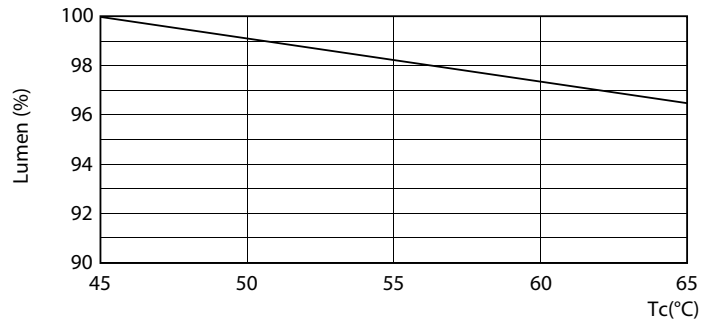
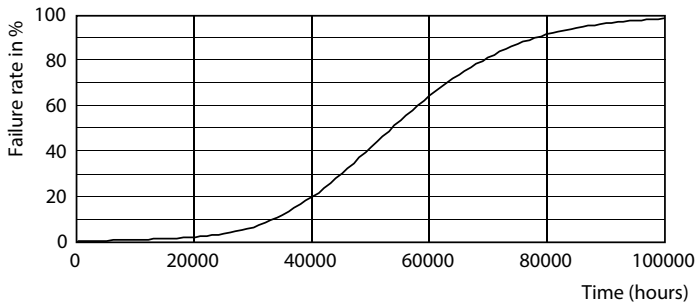
LEDtube FA8 4000K 240D

Lifetime



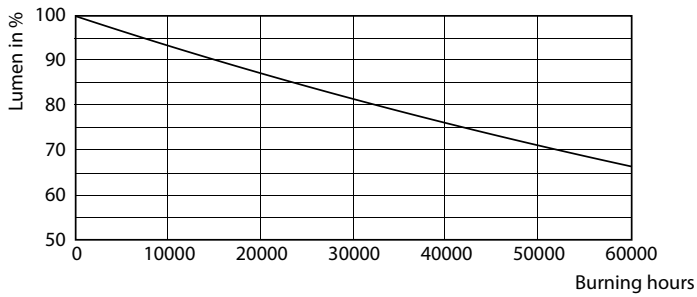
LEDtube FA8 4000K 240D LifetimeVsTc

LEDtube FA8 4000K 240D FailureRate



LEDtube FA8 4000K 240D

LEDtube FA8 4000K 240D LumenVsTc



LEDtube FA8 4000K 240D

