



T8

7T8/MAS/24-850/IF11/P 10/1

Our TLEDs are available in InstantFit (Type A / Type C) or MainsFit (Ballast bypass / Type B) versions. The InstantFit lamps work on a broad variety of ballasts and LED drivers. Only InstantFit has over 15,000 lamp & ballast combinations delivering even light output, energy savings and a long lifetime. Our MainsFit products feature a double-ended design, simplifying installation while a proprietary safety circuit minimizes a shock risk. Lamp sizes range from 2-foot to 8-foot and U-bend with a variety of lumen outputs.

Product data

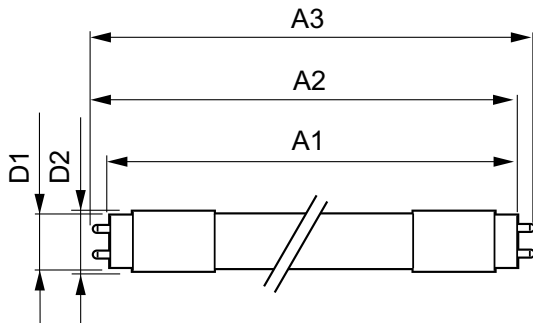
General Information		Starting Time (Nom)	
Base	G13 [Medium Bi-Pin Fluorescent]		0.5 s
EU RoHS compliant	Yes	Warm Up Time to 60% Light (Nom)	0.5 s
Nominal Lifetime (Nom)	70000 h	Power Factor (Nom)	0.9
Switching Cycle	50000X	Voltage (Nom)	120-277, 347 V
Light Technical		Temperature	
Color Code	850 [CCT of 5000K]	T-Ambient (Max)	45 °C
Beam Angle (Nom)	180 °	T-Ambient (Min)	-20 °C
Initial lumen (Nom)	1150 lm	T-Storage (Max)	65 °C
Correlated Color Temperature (Nom)	5000 K	T-Storage (Min)	-40 °C
Color Consistency	<5	T-Case Maximum (Nom)	50 °C
Color Rendering Index (Nom)	80	Controls and Dimming	
LLMF At End Of Nominal Lifetime (Nom)	70 %	Dimmable	No
Operating and Electrical		Mechanical and Housing	
Input Frequency	20K to 120K Hz	Product Length	600 mm
Power (Rated) (Nom)	7 W	Approval and Application	
Lamp Current (Max)	240 mA	Energy Saving Product	Yes
Lamp Current (Min)	80 mA		

T8

Approbation Marks	RoHS compliance UL certificate DLC compliance
Energy Certifications	DLC Standard
DesignLights Consortium Qualified Product List	-
Product Data	
XUCDM.COPY.Product.Title	7T8/MAS/24-850/IF11/P 10/1
EAN/UPC - Product	046677541842

Order code	541847
Numerator - Quantity Per Pack	1
Numerator - Packs per outer box	10
Material Nr. (12NC)	929001987204
Net Weight (Piece)	0.080 kg
Model Number	9290019872

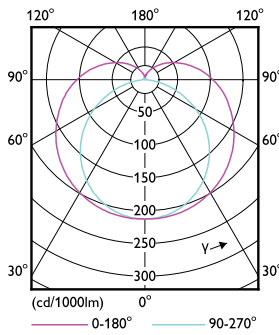
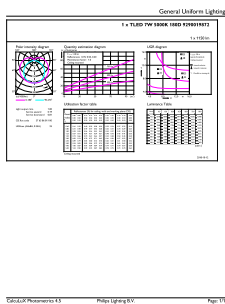
Dimensional drawing



TLED IF MasterClass 2ft 1100lm 5000K

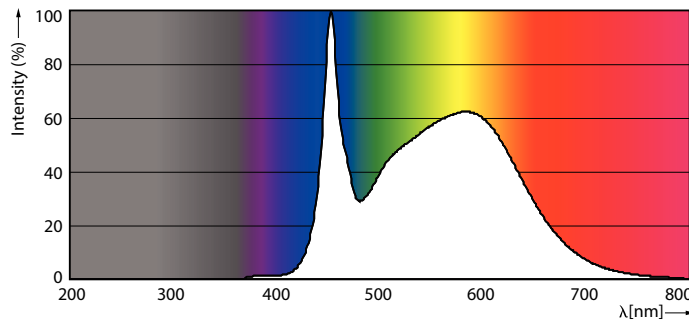
Product	D1	D2	A1	A2	A3
7T8/MAS/24-850/IF11/P 10/1	25.7 mm	26.3 mm	588.6 mm	595.7 mm	602.8 mm

Photometric data



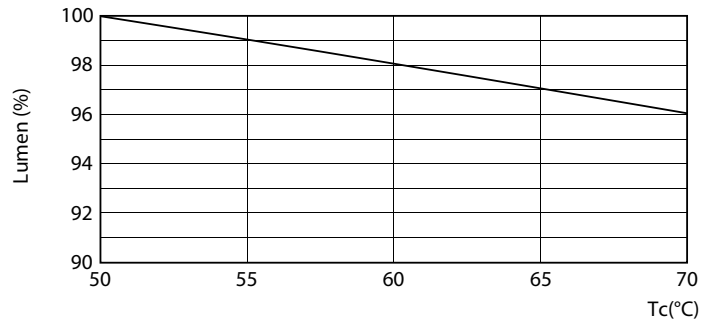
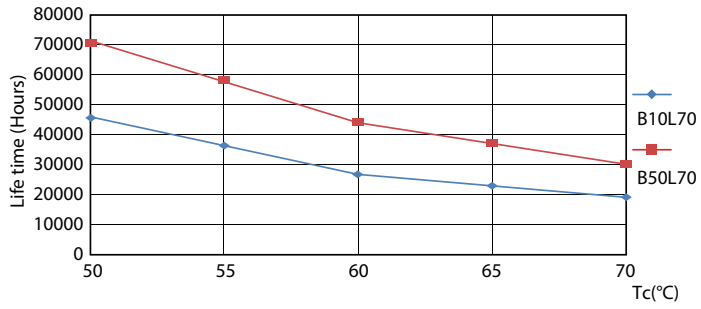
G13 5000K 1150lm

G13 4000K



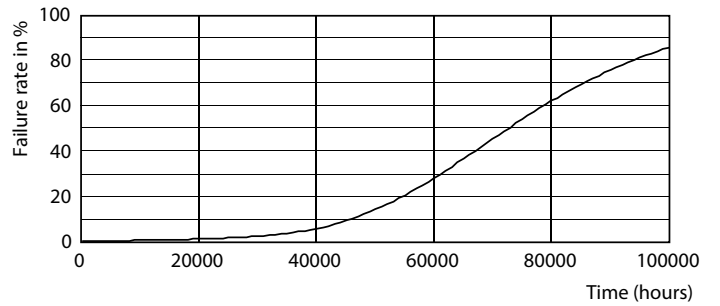
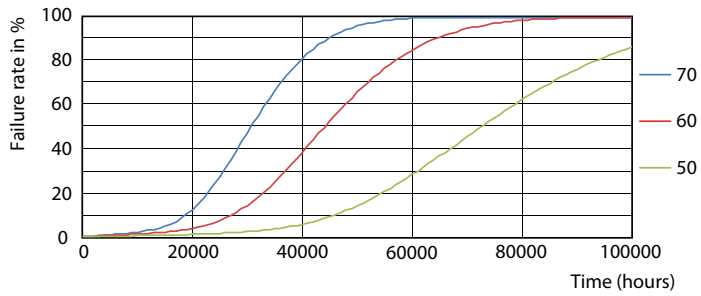
G13 5000K 1150lm

Lifetime



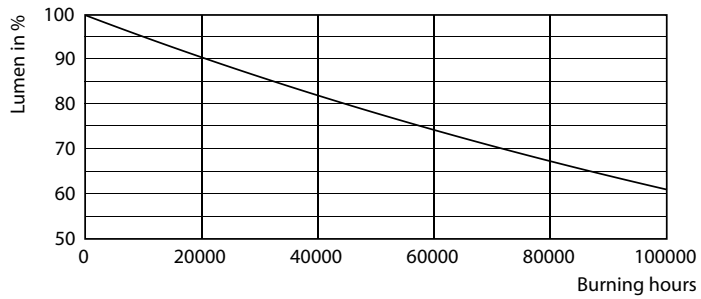
G13 4000K

G13 4000K



G13 4000K

G13 4000K



G13 4000K

