

# T8

## 7T8/MAS/24-835/IF10/P 10/1

Our TLEDs are available in InstantFit (Type A / Type C) or MainsFit (Ballast bypass / Type B) versions. The InstantFit lamps work on a broad variety of ballasts and LED drivers. Only InstantFit has over 15,000 lamp & ballast combinations delivering even light output, energy savings and a long lifetime. Our MainsFit products feature a double-ended design, simplifying installation while a proprietary safety circuit minimizes a shock risk. Lamp sizes range from 2-foot to 8-foot and U-bend with a variety of lumen outputs.

### Product data

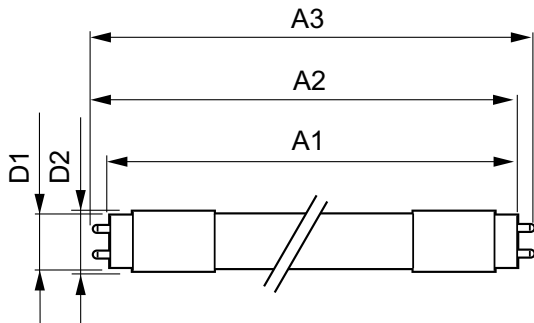
General Information		Starting Time (Nom)	
Base	G13 [ Medium Bi-Pin Fluorescent]		0.5 s
EU RoHS compliant	Yes	Warm Up Time to 60% Light (Nom)	0.5 s
Nominal Lifetime (Nom)	70000 h	Power Factor (Nom)	0.9
Switching Cycle	50000X	Voltage (Nom)	120-277, 347 V
Light Technical		Temperature	
Color Code	835 [ CCT of 3500K]	T-Ambient (Max)	45 °C
Beam Angle (Nom)	180 °	T-Ambient (Min)	-20 °C
Initial lumen (Nom)	1100 lm	T-Storage (Max)	65 °C
Correlated Color Temperature (Nom)	3500 K	T-Storage (Min)	-40 °C
Color Consistency	<6	T-Case Maximum (Nom)	50 °C
Color Rendering Index (Nom)	80	Controls and Dimming	
LLMF At End Of Nominal Lifetime (Nom)	70 %	Dimmable	No
Operating and Electrical		Mechanical and Housing	
Input Frequency	20K to 120K Hz	Product Length	600 mm
Power (Rated) (Nom)	7 W	Approval and Application	
Lamp Current (Max)	240 mA	Energy Saving Product	Yes
Lamp Current (Min)	80 mA		

# T8

Approval Marks	RoHS compliance UL certificate DLC compliance
Energy Certifications	DLC Standard
DesignLights Consortium Qualified Product List	-
<b>Product Data</b>	
XUCDM.COPY.Product.Title	7T8/MAS/24-835/IF10/P 10/1
EAN/UPC - Product	046677541828

Order code	541821
Numerator - Quantity Per Pack	1
Numerator - Packs per outer box	10
Material Nr. (12NC)	929001987004
Net Weight (Piece)	0.080 kg
Model Number	9290019870

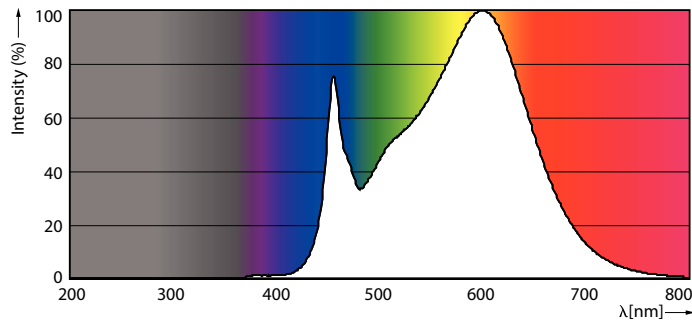
## Dimensional drawing



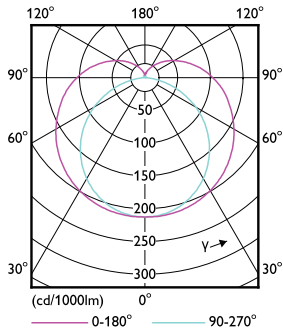
TLED IF MasterClass 2ft 1000lm 3500K

Product	D1	D2	A1	A2	A3
7T8/MAS/24-835/IF10/P 10/1	25.7 mm	26.3 mm	588.6 mm	595.7 mm	602.8 mm

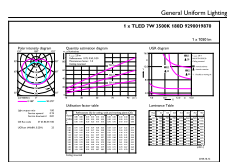
## Photometric data



G13 3500K 1100lm

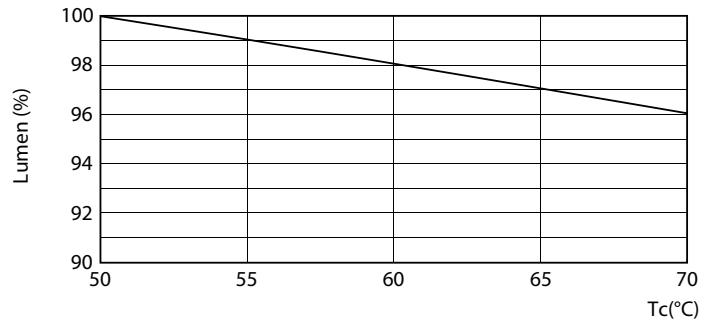
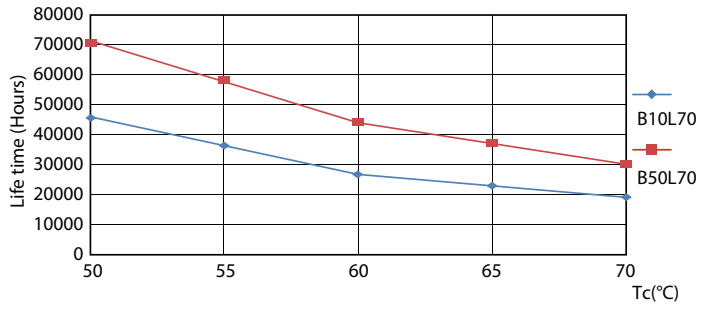


G13 4000K



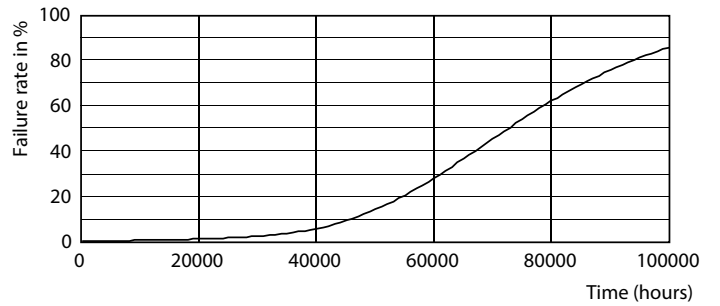
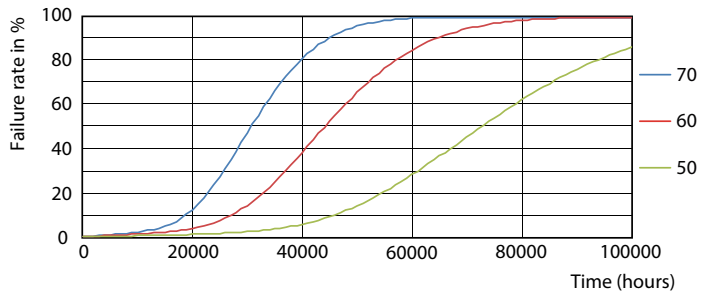
G13 3500K 1100lm

Lifetime



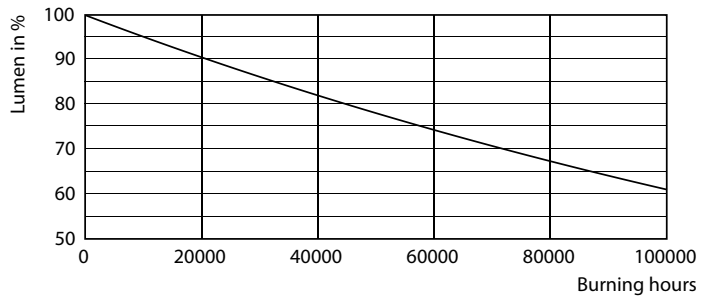
G13 4000K

G13 4000K



G13 4000K

G13 4000K



G13 4000K

