



T8

8.5T8/MAS/36-840/IF14/P 10/1

Our TLEDs are available in InstantFit (Type A / Type C) or MainsFit (Ballast bypass / Type B) versions. The InstantFit lamps work on a broad variety of ballasts and LED drivers. Only InstantFit has over 15,000 lamp & ballast combinations delivering even light output, energy savings and a long lifetime. Our MainsFit products feature a double-ended design, simplifying installation while a proprietary safety circuit minimizes a shock risk. Lamp sizes range from 2-foot to 8-foot and U-bend with a variety of lumen outputs.

Product data

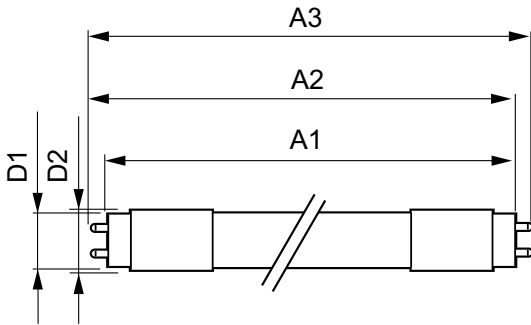
General Information		Power Factor (Nom)	
Base	G13 [Medium Bi-Pin Fluorescent]		0.9
EU RoHS compliant	Yes	Voltage (Nom)	120-277, 347 V
Nominal Lifetime (Nom)	70000 h	Temperature	
Switching Cycle	50000X	T-Ambient (Max)	45 °C
Light Technical		T-Ambient (Min)	-20 °C
Color Code	841 [CCT of 4100K (841)]	T-Storage (Max)	65 °C
Beam Angle (Nom)	180 °	T-Storage (Min)	-40 °C
Initial lumen (Nom)	1400 lm	T-Case Maximum (Nom)	50 °C
Correlated Color Temperature (Nom)	4000 K	Controls and Dimming	
Color Consistency	<6	Dimmable	No
Color Rendering Index (Nom)	80	Mechanical and Housing	
LLMF At End Of Nominal Lifetime (Nom)	70 %	Product Length	900 mm
Operating and Electrical		Approval and Application	
Input Frequency	20K to 120K Hz	Energy Saving Product	Yes
Power (Rated) (Nom)	8.5 W	Approbation Marks	RoHS compliance UL certificate DLC compliance
Starting Time (Nom)	0.5 s		
Warm Up Time to 60% Light (Nom)	0.5 s		

T8

Energy Certifications	DLC Standard
DesignLights Consortium Qualified Product List	-
Product Data	
XUCDM.COPY.Product.Title	8.5T8/MAS/36-840/IF14/P 10/1
EAN/UPC - Product	046677539870
Order code	539874

Numerator - Quantity Per Pack	1
Numerator - Packs per outer box	10
Material Nr. (12NC)	929001967604
Net Weight (Piece)	0.160 kg
Model Number	9290019676

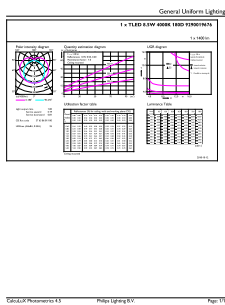
Dimensional drawing



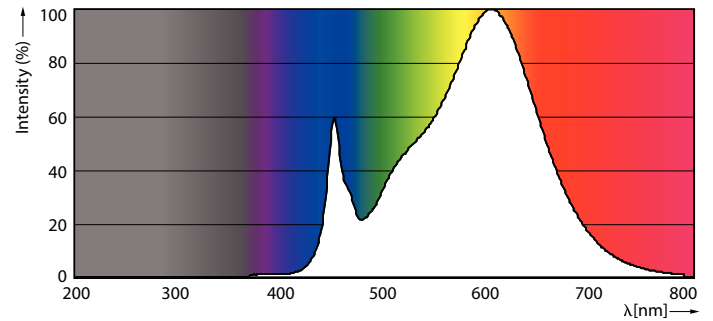
TLED IF MasterClass 3ft 1400lm 4000K

Product	D1	D2	A1	A2	A3
8.5T8/MAS/36-840/IF14/P 10/1	25.7 mm	26.3 mm	893.4 mm	900.5 mm	907.6 mm

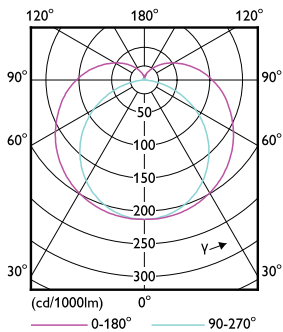
Photometric data



G13 4000K 1400lm

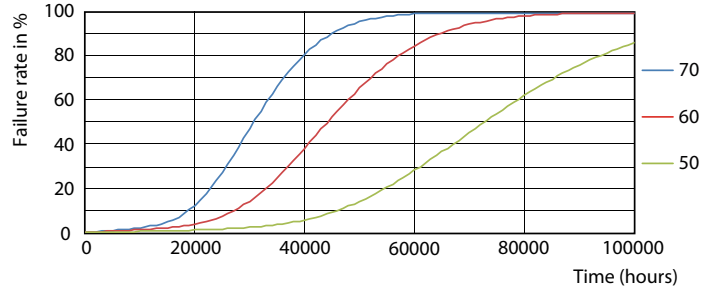
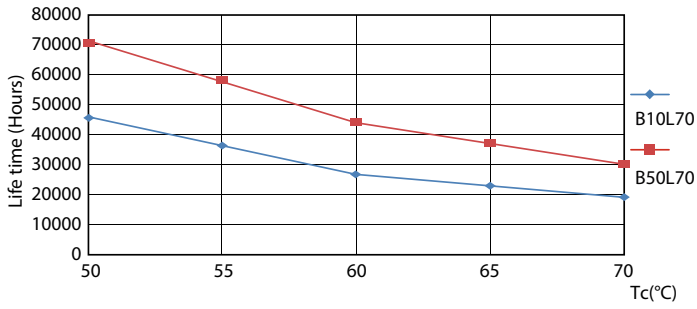


G13 4000K 1400lm

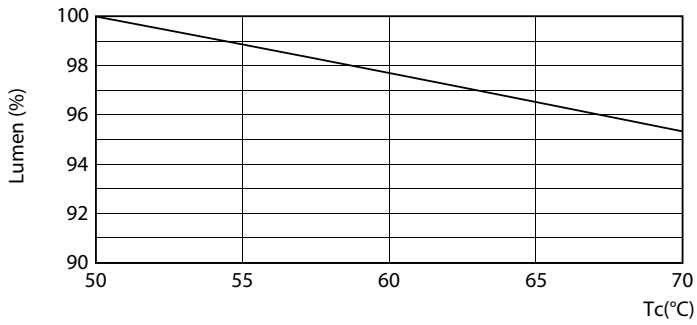


G13 4000K

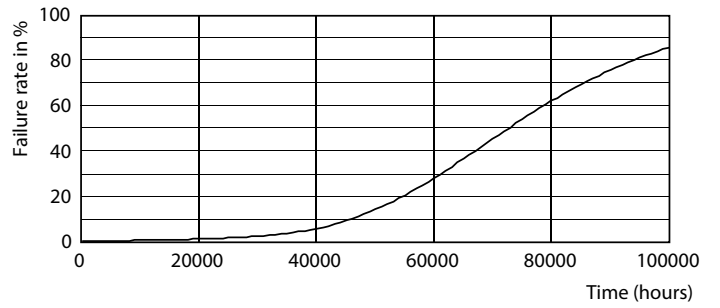
Lifetime



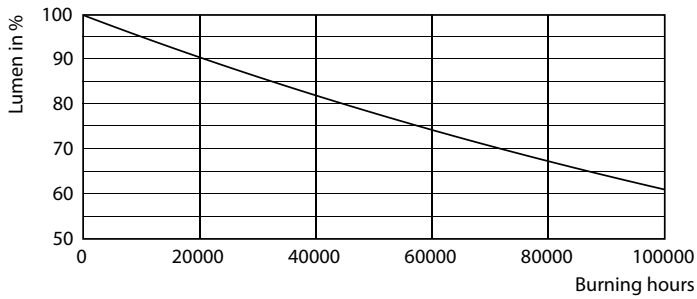
G13 4000K



G13 4000K



G13 4000K



G13 4000K

G13 4000K

