



# T8

## 8.5T8/MAS/36-830/IF13/P 10/1

Our TLEDs are available in InstantFit (Type A / Type C) or MainsFit (Ballast bypass / Type B) versions. The InstantFit lamps work on a broad variety of ballasts and LED drivers. Only InstantFit has over 15,000 lamp & ballast combinations delivering even light output, energy savings and a long lifetime. Our MainsFit products feature a double-ended design, simplifying installation while a proprietary safety circuit minimizes a shock risk. Lamp sizes range from 2-foot to 8-foot and U-bend with a variety of lumen outputs.

### Product data

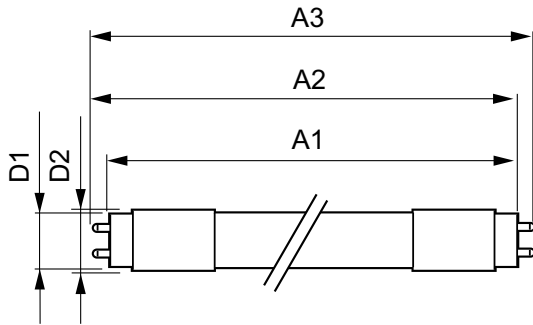
General Information		Power Factor (Nom)	
Base	G13 [ Medium Bi-Pin Fluorescent]		0.9
EU RoHS compliant	Yes	Voltage (Nom)	120-277, 347 V
Nominal Lifetime (Nom)	70000 h	<b>Temperature</b>	
Switching Cycle	50000X	T-Ambient (Max)	45 °C
<b>Light Technical</b>		T-Ambient (Min)	-20 °C
Color Code	830 [ CCT of 3000K]	T-Storage (Max)	65 °C
Beam Angle (Nom)	180 °	T-Storage (Min)	-40 °C
Initial lumen (Nom)	1300 lm	T-Case Maximum (Nom)	50 °C
Correlated Color Temperature (Nom)	3000 K	<b>Controls and Dimming</b>	
Color Consistency	<6	Dimmable	No
Color Rendering Index (Nom)	80	<b>Mechanical and Housing</b>	
LLMF At End Of Nominal Lifetime (Nom)	70 %	Product Length	900 mm
<b>Operating and Electrical</b>		<b>Approval and Application</b>	
Input Frequency	20K to 120K Hz	Energy Saving Product	Yes
Power (Rated) (Nom)	8.5 W	Approbation Marks	RoHS compliance UL certificate DLC compliance
Starting Time (Nom)	0.5 s		
Warm Up Time to 60% Light (Nom)	0.5 s		

# T8

Energy Certifications	DLC Standard
DesignLights Consortium Qualified Product List	-
<b>Product Data</b>	
XUCDM.COPY.Product.Title	8.5T8/MAS/36-830/IF13/P 10/1
EAN/UPC - Product	046677539856
Order code	539858

Numerator - Quantity Per Pack	1
Numerator - Packs per outer box	10
Material Nr. (12NC)	929001967504
Net Weight (Piece)	0.160 kg
Model Number	9290019675

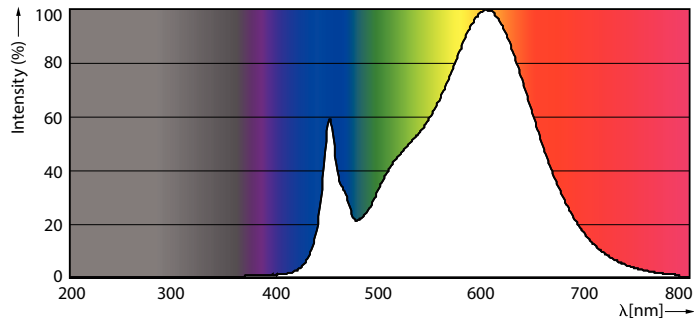
## Dimensional drawing



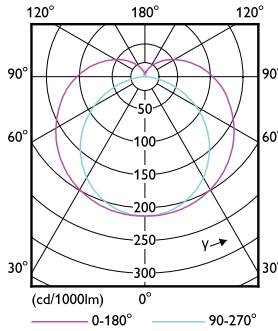
TLED IF MasterClass 3ft 1300lm 3000K

Product	D1	D2	A1	A2	A3
8.5T8/MAS/36-830/IF13/P 10/1	25.7 mm	26.3 mm	893.4 mm	900.5 mm	907.6 mm

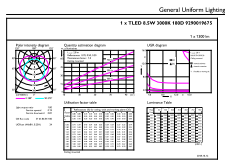
## Photometric data



G13 3000K 1300lm

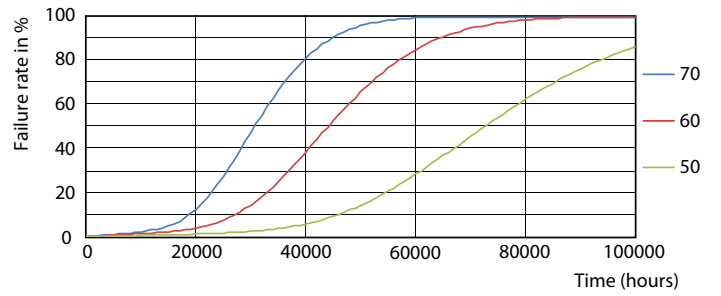
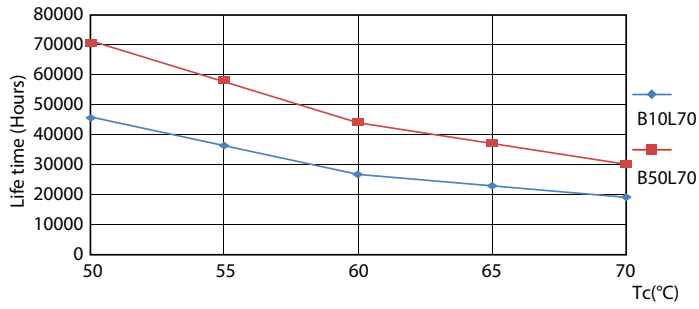


G13 4000K



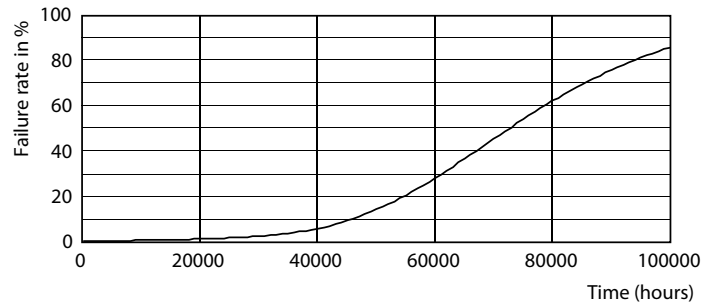
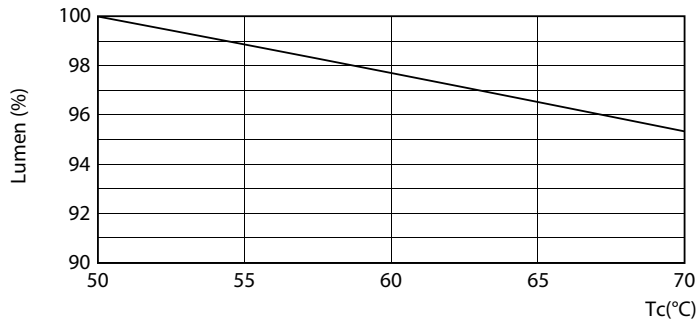
G13 3000K 1300lm

Lifetime



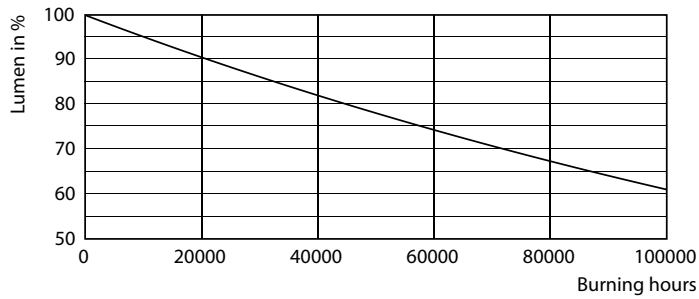
G13 4000K

G13 4000K



G13 4000K

G13 4000K



G13 4000K

