



MasterConnect

8T8/24-830/IF11/MAScon IA 10/1

Product data

General Information	
Base	G13 [Medium Bi-Pin Fluorescent]
EU RoHS compliant	Yes
Nominal Lifetime (Nom)	50000 h
Switching Cycle	50000X
Light Technical	
Color Code	830 [CCT of 3000K]
Beam Angle (Nom)	160 °
Initial lumen (Nom)	1150 lm
Correlated Color Temperature (Nom)	3000 K
Color Consistency	<6
Color Rendering Index (Nom)	80
LLMF At End Of Nominal Lifetime (Nom)	70 %
Operating and Electrical	
Input Frequency	40000-85000 Hz
Power (Rated) (Nom)	8 W
Lamp Current (Max)	280 mA
Lamp Current (Min)	70 mA
Starting Time (Nom)	0.5 s
Warm Up Time to 60% Light (Nom)	0.5 s
Power Factor (Nom)	0.9
Voltage (Nom)	200-380 V
Temperature	
T-Ambient (Max)	45 °C

T-Ambient (Min)	-20 °C
T-Storage (Max)	65 °C
T-Storage (Min)	-40 °C
T-Case Maximum (Nom)	35 °C

Controls and Dimming

Dimmable	Wireless Dim
----------	--------------

Mechanical and Housing

Product Length	600 mm
----------------	--------

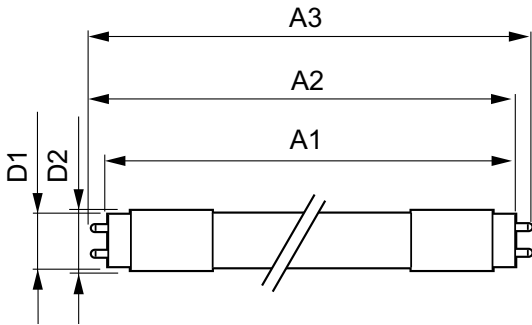
Approval and Application

Energy Saving Product	Yes
Approbation Marks	UL certificate RoHS compliance

Product Data

XUCDM.COPY.Product.Title	8T8/24-830/IF11/MAScon IA 10/1
EAN/UPC - Product	046677537258
Order code	537258
Numerator - Quantity Per Pack	1
Numerator - Packs per outer box	10
Material Nr. (12NC)	929001398464
Net Weight (Piece)	0.080 kg
Model Number	9290013984

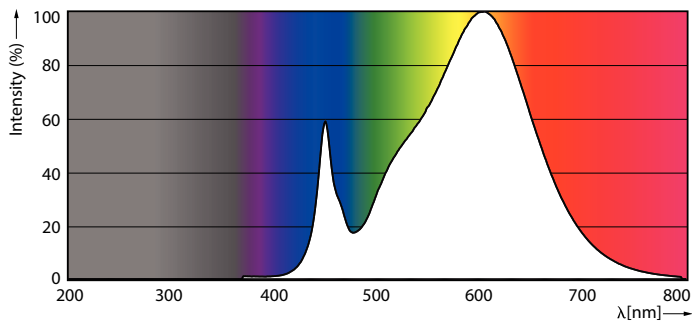
Dimensional drawing



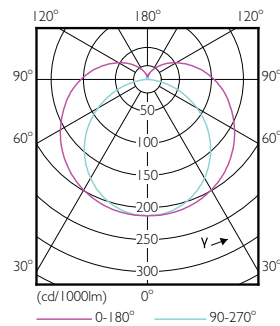
TLED SMART 2ft HF 8-18W 950lm 3000K

Product	D1	D2	A1	A2	A3
8T8/24-830/IF11/MAScon	25.6 mm	27.8 mm	588.6 mm	595.7 mm	602.8 mm
IA 10/1					

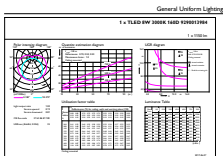
Photometric data



LEDtube 600mm 8W G5 830 1000lm



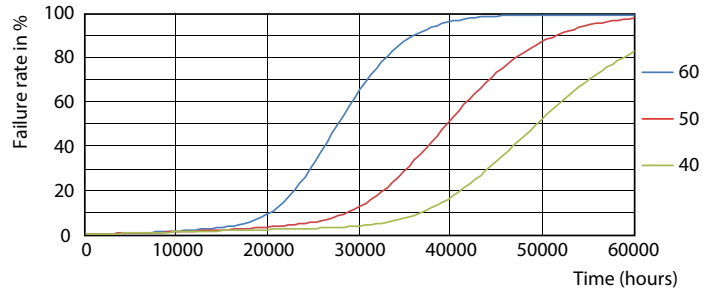
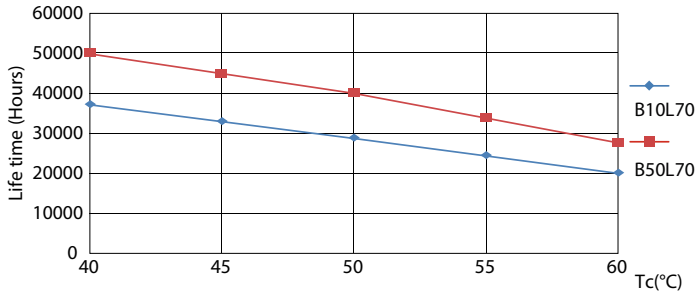
LEDtube 8W G13 830 160D IF EasySmart



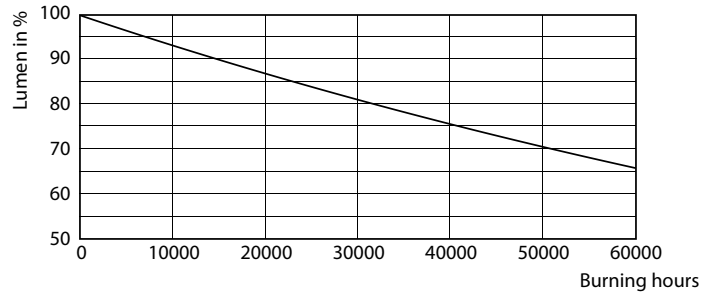
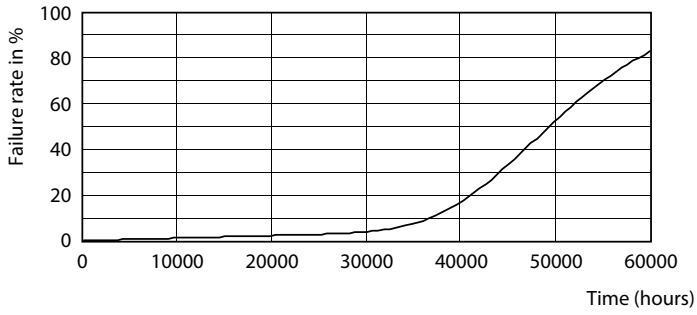
Technical Parameters 01 Page Lighting 01 Page 11

LEDtube 8W G13 830 160D IF EasySmart

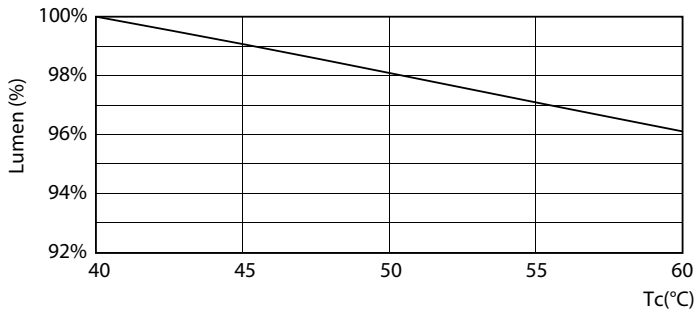
Lifetime



LEDtube 15W G13 830-850 160D IF 6U EasySmart



LEDtube 15W G13 830-850 160D IF 6U EasySmart



LEDtube 15W G13 830-850 160D IF 6U EasySmart

