



# T8

## 11.5T8/COR/36-850/MF14/G 10/1

Our TLEDs are available in InstantFit (Type A / Type C) or MainsFit (Ballast bypass / Type B) versions. The InstantFit lamps work on a broad variety of ballasts and LED drivers. Only InstantFit has over 15,000 lamp & ballast combinations delivering even light output, energy savings and a long lifetime. Our MainsFit products feature a double-ended design, simplifying installation while a proprietary safety circuit minimizes a shock risk. Lamp sizes range from 2-foot to 8-foot and U-bend with a variety of lumen outputs.

### Product data

General Information	
Base	G13 [ Medium Bi-Pin Fluorescent]
EU RoHS compliant	Yes
Nominal Lifetime (Nom)	50000 h
Switching Cycle	50000X
Light Technical	
Color Code	850 [ CCT of 5000K]
Beam Angle (Nom)	180 °
Initial lumen (Nom)	1400 lm
Luminous Flux (Rated) (Nom)	1400 lm
Correlated Color Temperature (Nom)	5000 K
Color Consistency	<5
Color Rendering Index (Nom)	82
LLMF At End Of Nominal Lifetime (Nom)	70 %
Operating and Electrical	
Input Frequency	50 to 60 Hz
Power (Rated) (Nom)	11.5 W
Lamp Current (Max)	101 mA

Lamp Current (Min)	47 mA
Starting Time (Nom)	0.9 s
Warm Up Time to 60% Light (Nom)	0.9 s
Power Factor (Nom)	0.9
Voltage (Nom)	120-277 V

Temperature	
T-Ambient (Max)	45 °C
T-Ambient (Min)	-20 °C
T-Storage (Max)	65 °C
T-Storage (Min)	-40 °C
T-Case Maximum (Nom)	50 °C

Controls and Dimming	
Dimmable	No

Mechanical and Housing	
Product Length	900 mm

# T8

## Approval and Application

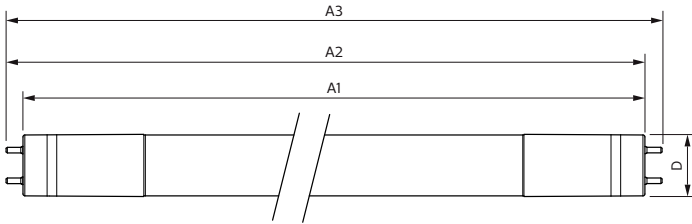
Energy Saving Product	Yes
Approbation Marks	UL certificate RoHS compliance DLC compliance
Energy Certifications	DLC Standard
DesignLights Consortium Qualified Product List	-

## Product Data

XUCDM.COPY.Product.Title	11.5T8/COR/36-850/MF14/G 10/1
--------------------------	-------------------------------

EAN/UPC - Product	046677535520
Order code	535526
Numerator - Quantity Per Pack	1
Numerator - Packs per outer box	10
Material Nr. (12NC)	929001934504
Net Weight (Piece)	0.250 kg
Model Number	9290019345

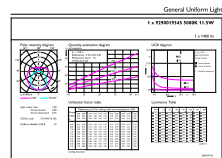
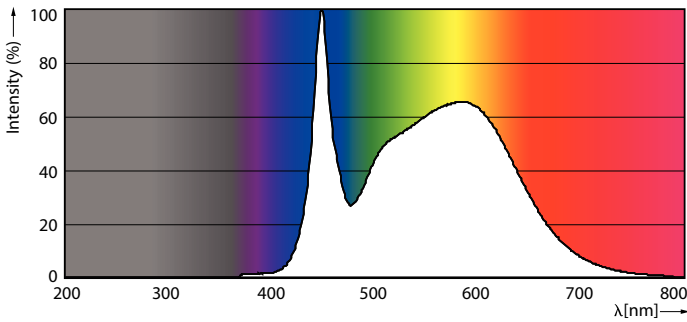
## Dimensional drawing



Product	D	A1	A2	A3
11.5T8/COR/36-850/MF14/G 10/1	25.9 mm	894.3 mm	900.5 mm	908.8 mm

## TLED MF CorePro 3ft 1400lm 5000K

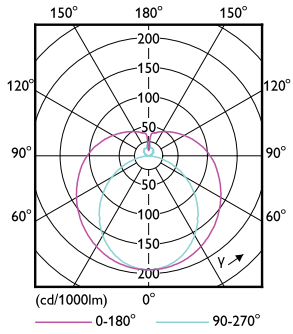
## Photometric data



## 11-5W G13

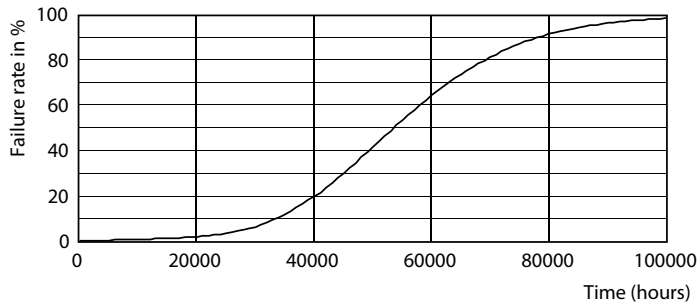
## 11-5W G13 850 5000K

Photometric data

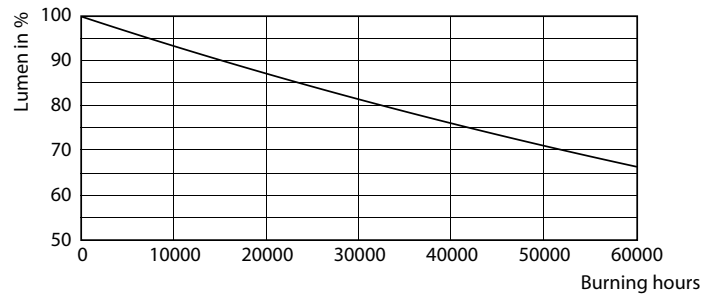


11.5W G13 840

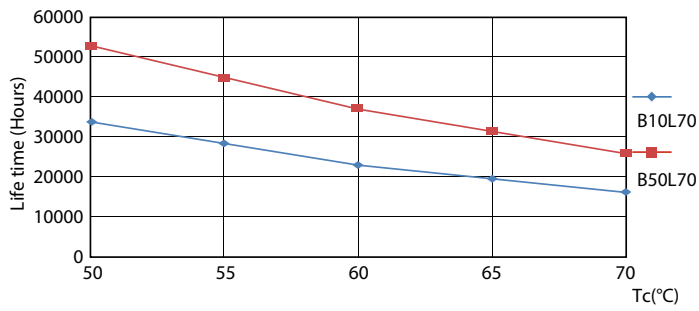
Lifetime



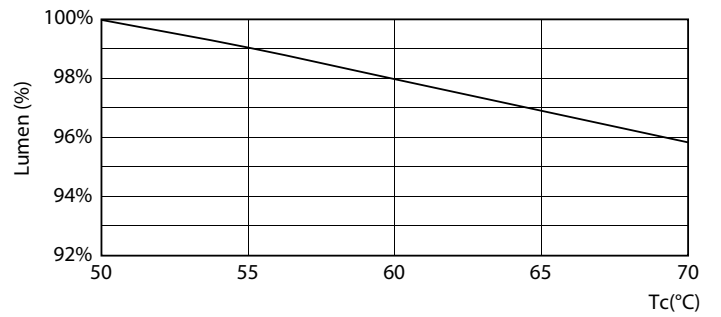
8.5W G13



8.5W G13



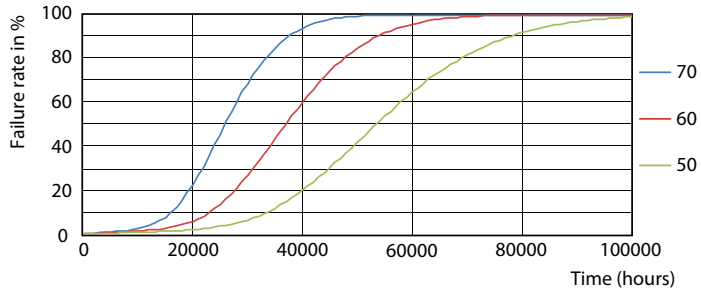
8.5W G13



11.5W

# T8

## Lifetime



8.5W G13

