

T8

11.5T8/COR/36-830/MF13/G 10/1

Our TLEDs are available in InstantFit (Type A / Type C) or MainsFit (Ballast bypass / Type B) versions. The InstantFit lamps work on a broad variety of ballasts and LED drivers. Only InstantFit has over 15,000 lamp & ballast combinations delivering even light output, energy savings and a long lifetime. Our MainsFit products feature a double-ended design, simplifying installation while a proprietary safety circuit minimizes a shock risk. Lamp sizes range from 2-foot to 8-foot and U-bend with a variety of lumen outputs.

Product data

General Information	
Base	G13 [Medium Bi-Pin Fluorescent]
EU RoHS compliant	Yes
Nominal Lifetime (Nom)	50000 h
Switching Cycle	50000X
Light Technical	
Color Code	830 [CCT of 3000K]
Beam Angle (Nom)	180 °
Initial lumen (Nom)	1300 lm
Luminous Flux (Rated) (Nom)	1300 lm
Correlated Color Temperature (Nom)	3000 K
Color Consistency	<6
Color Rendering Index (Nom)	82
LLMF At End Of Nominal Lifetime (Nom)	70 %
Operating and Electrical	
Input Frequency	50 to 60 Hz
Power (Rated) (Nom)	11.5 W
Lamp Current (Max)	101 mA

Lamp Current (Min)	47 mA
Starting Time (Nom)	0.9 s
Warm Up Time to 60% Light (Nom)	0.9 s
Power Factor (Nom)	0.9
Voltage (Nom)	120-277 V
Temperature	
T-Ambient (Max)	45 °C
T-Ambient (Min)	-20 °C
T-Storage (Max)	65 °C
T-Storage (Min)	-40 °C
T-Case Maximum (Nom)	50 °C
Controls and Dimming	
Dimmable	No
Mechanical and Housing	
Product Length	900 mm

T8

Approval and Application

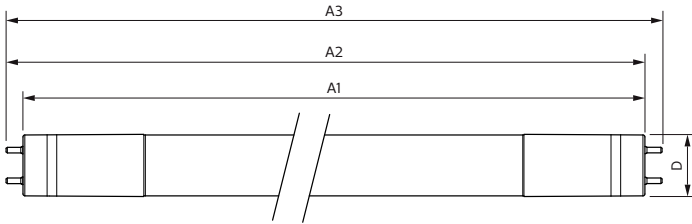
Energy Saving Product	Yes
Approbation Marks	UL certificate RoHS compliance DLC compliance
Energy Certifications	DLC Standard
DesignLights Consortium Qualified Product List	-

Product Data

XUCDM.COPY.Product.Title	11.5T8/COR/36-830/MF13/G 10/1
--------------------------	-------------------------------

EAN/UPC - Product	046677535490
Order code	535492
Numerator - Quantity Per Pack	1
Numerator - Packs per outer box	10
Material Nr. (12NC)	929001934204
Net Weight (Piece)	0.250 kg
Model Number	9290019342

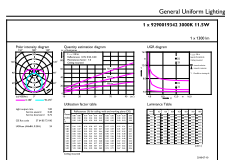
Dimensional drawing



Product	D	A1	A2	A3
11.5T8/COR/36-830/MF13/G 10/1	25.9 mm	894.3 mm	900.5 mm	908.8 mm

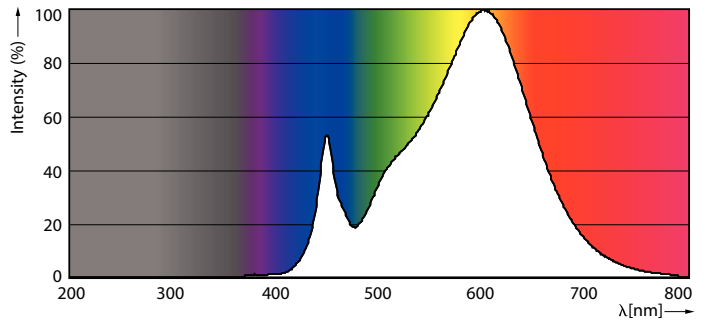
TLED MF CorePro 3ft 1300lm 3000K

Photometric data



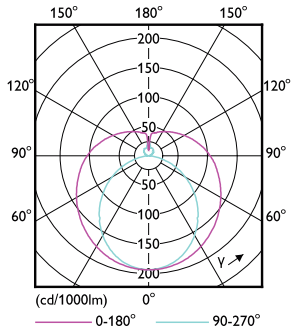
©2020 Phosoronic LLC | Phos Lighting LLC | Page 11

11-5W G13 830 3000K



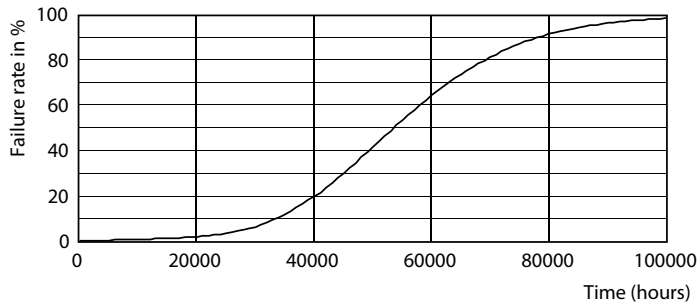
11-5W G13

Photometric data

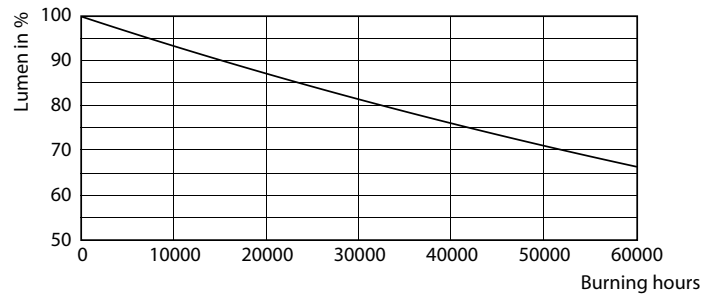


11.5W G13 840

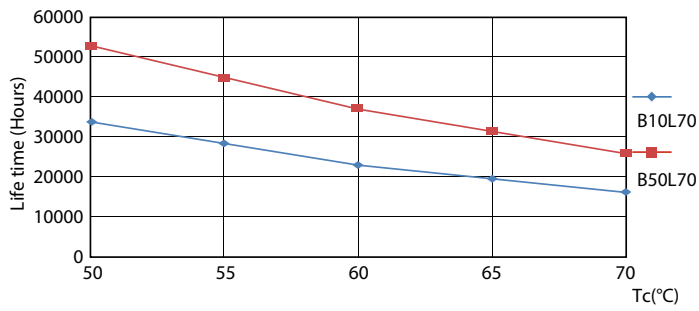
Lifetime



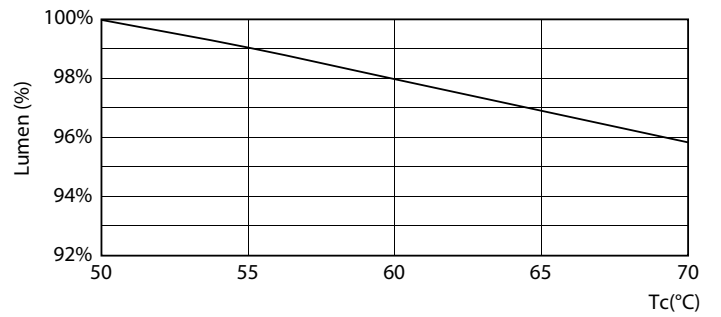
8.5W G13



8.5W G13



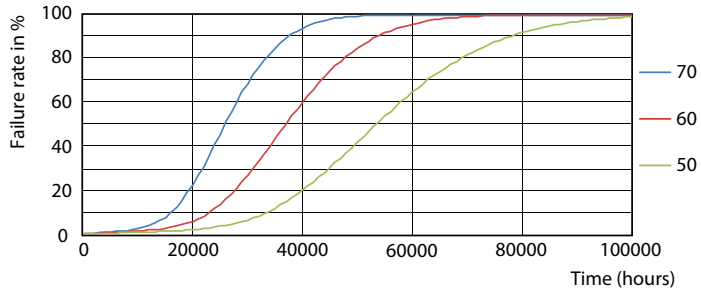
8.5W G13



11.5W

T8

Lifetime



8.5W G13

