



# T8

## 8.5T8/COR/24-850/MF11/G 10/1

Our TLEDs are available in InstantFit (Type A / Type C) or MainsFit (Ballast bypass / Type B) versions. The InstantFit lamps work on a broad variety of ballasts and LED drivers. Only InstantFit has over 15,000 lamp & ballast combinations delivering even light output, energy savings and a long lifetime. Our MainsFit products feature a double-ended design, simplifying installation while a proprietary safety circuit minimizes a shock risk. Lamp sizes range from 2-foot to 8-foot and U-bend with a variety of lumen outputs.

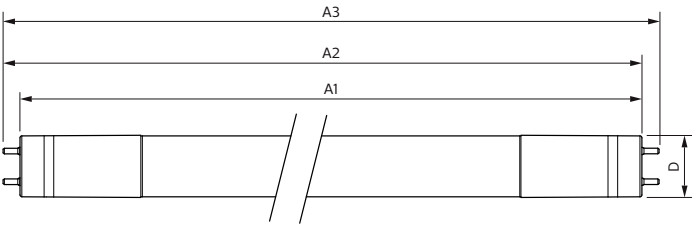
### Product data

<b>General Information</b>		<b>Starting Time (Nom)</b>		0.9 s
Base	G13 [ Medium Bi-Pin Fluorescent]	<b>Warm Up Time to 60% Light (Nom)</b>		0.9 s
EU RoHS compliant	Yes	<b>Power Factor (Nom)</b>		0.9
Nominal Lifetime (Nom)	50000 h	<b>Voltage (Nom)</b>		120-277 V
Switching Cycle	50000X			
<b>Light Technical</b>		<b>Temperature</b>		
Color Code	850 [ CCT of 5000K]	<b>T-Ambient (Max)</b>		45 °C
Beam Angle (Nom)	180 °	<b>T-Ambient (Min)</b>		-20 °C
Initial lumen (Nom)	1150 lm	<b>T-Storage (Max)</b>		65 °C
Correlated Color Temperature (Nom)	5000 K	<b>T-Storage (Min)</b>		-40 °C
Color Consistency	<5	<b>T-Case Maximum (Nom)</b>		50 °C
Color Rendering Index (Nom)	82			
LLMF At End Of Nominal Lifetime (Nom)	70 %	<b>Controls and Dimming</b>		
		<b>Dimmable</b>		No
<b>Operating and Electrical</b>		<b>Mechanical and Housing</b>		
Input Frequency	50 to 60 Hz	<b>Product Length</b>		600 mm
Power (Rated) (Nom)	8.5 W			
Lamp Current (Max)	75 mA	<b>Approval and Application</b>		
Lamp Current (Min)	36 mA	<b>Energy Saving Product</b>		Yes

Approbation Marks	UL certificate RoHS compliance DLC compliance
Energy Certifications	DLC Standard
DesignLights Consortium Qualified Product List -	
Product Data	
XUCDM.COPY.Product.Title	8.5T8/COR/24-850/MF11/G 10/1
EAN/UPC - Product	046677535483

Order code	535484
Numerator - Quantity Per Pack	1
Numerator - Packs per outer box	10
Material Nr. (12NC)	929001934104
Net Weight (Piece)	0.200 kg
Model Number	9290019341

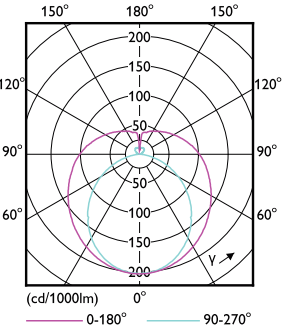
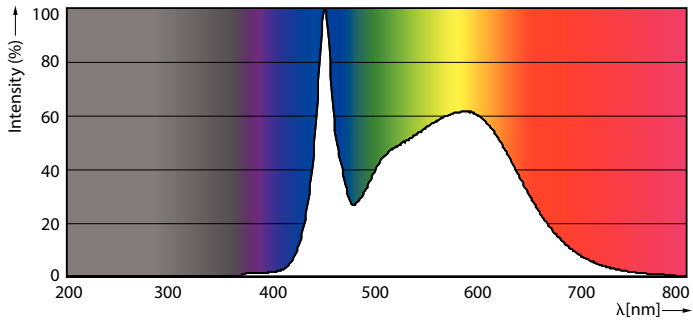
Dimensional drawing



Product	D	A1	A2	A3
8.5T8/COR/24-850/MF11/G 10/1	25.9 mm	589.5 mm	595.7 mm	604 mm

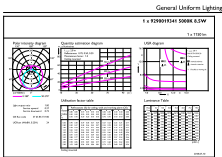
TLED MF CorePro 2ft 1100lm 5000K

Photometric data



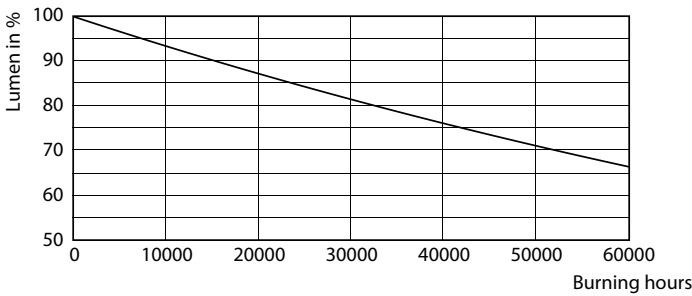
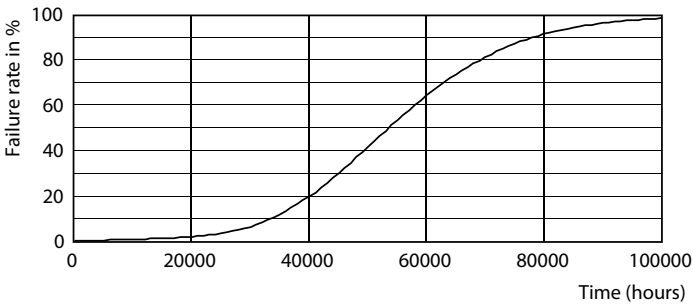
8-5W G13

8.5W G13 840



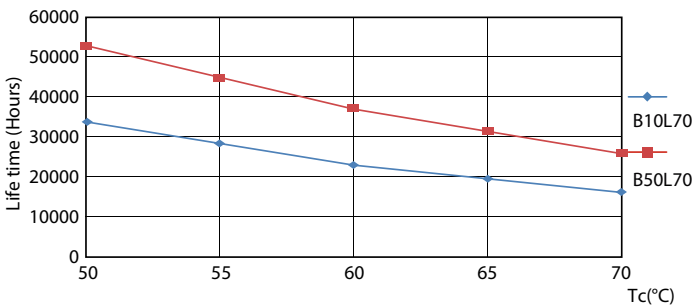
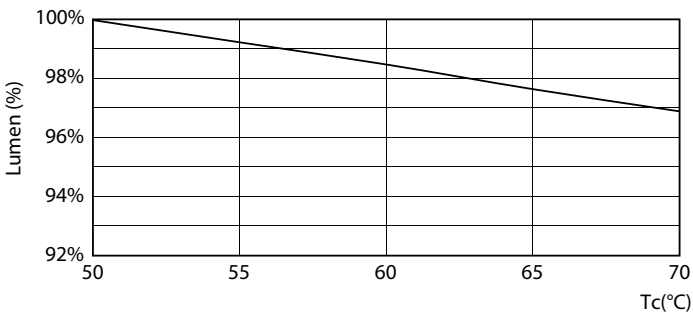
8-5W G13 850 5000K

Lifetime



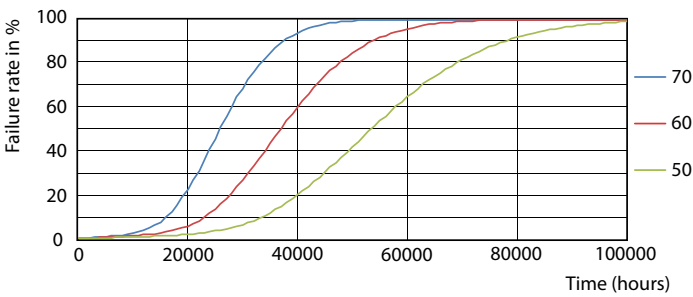
8.5W G13

8.5W G13



8.5W G13

8.5W G13



8.5W G13

