



T8

8.5T8/COR/24-830/MF11/G 10/1

Our TLEDs are available in InstantFit (Type A / Type C) or MainsFit (Ballast bypass / Type B) versions. The InstantFit lamps work on a broad variety of ballasts and LED drivers. Only InstantFit has over 15,000 lamp & ballast combinations delivering even light output, energy savings and a long lifetime. Our MainsFit products feature a double-ended design, simplifying installation while a proprietary safety circuit minimizes a shock risk. Lamp sizes range from 2-foot to 8-foot and U-bend with a variety of lumen outputs.

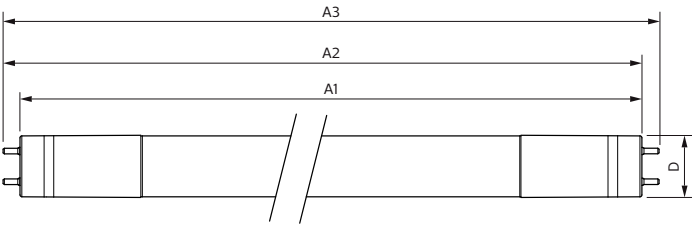
Product data

General Information		Starting Time (Nom)	
Base	G13 [Medium Bi-Pin Fluorescent]	Warm Up Time to 60% Light (Nom)	0.9 s
EU RoHS compliant	Yes	Power Factor (Nom)	0.9
Nominal Lifetime (Nom)	50000 h	Voltage (Nom)	120-277 V
Switching Cycle	50000X	Temperature	
Light Technical		T-Ambient (Max)	45 °C
Color Code	830 [CCT of 3000K]	T-Ambient (Min)	-20 °C
Beam Angle (Nom)	180 °	T-Storage (Max)	65 °C
Initial lumen (Nom)	1100 lm	T-Storage (Min)	-40 °C
Correlated Color Temperature (Nom)	3000 K	T-Case Maximum (Nom)	50 °C
Color Consistency	<6	Controls and Dimming	
Color Rendering Index (Nom)	82	Dimmable	No
LLMF At End Of Nominal Lifetime (Nom)	70 %	Mechanical and Housing	
Operating and Electrical		Product Length	600 mm
Input Frequency	50 to 60 Hz	Approval and Application	
Power (Rated) (Nom)	8.5 W	Energy Saving Product	Yes
Lamp Current (Max)	75 mA		
Lamp Current (Min)	36 mA		

Approbation Marks	UL certificate RoHS compliance DLC compliance
Energy Certifications	DLC Standard
DesignLights Consortium Qualified Product List -	
Product Data	
XUCDM.COPY.Product.Title	8.5T8/COR/24-830/MF11/G 10/1
EAN/UPC - Product	046677535452

Order code	535450
Numerator - Quantity Per Pack	1
Numerator - Packs per outer box	10
Material Nr. (12NC)	929001933804
Net Weight (Piece)	0.200 kg
Model Number	9290019338

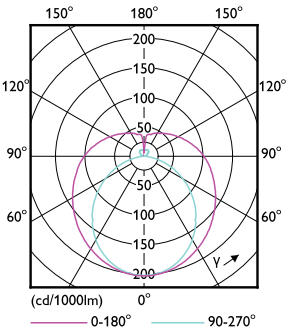
Dimensional drawing



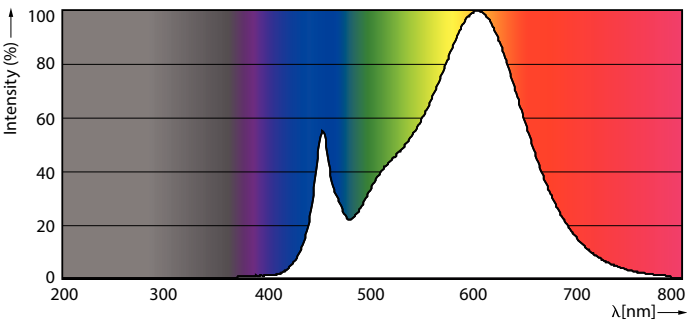
Product	D	A1	A2	A3
8.5T8/COR/24-830/MF11/G 10/1	25.9 mm	589.5 mm	595.7 mm	604 mm

TLED MF CorePro 2ft 1100lm 3000K

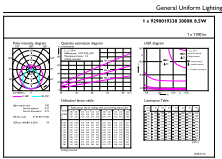
Photometric data



8.5W G13 840

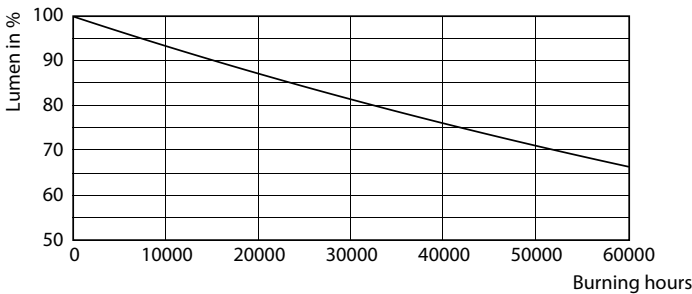
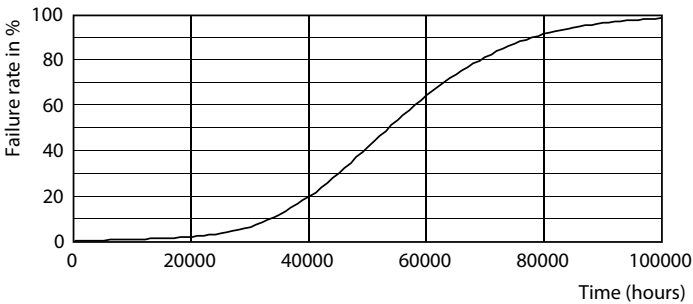


8-5W G13



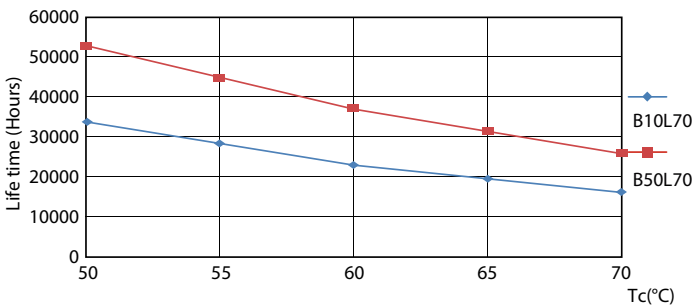
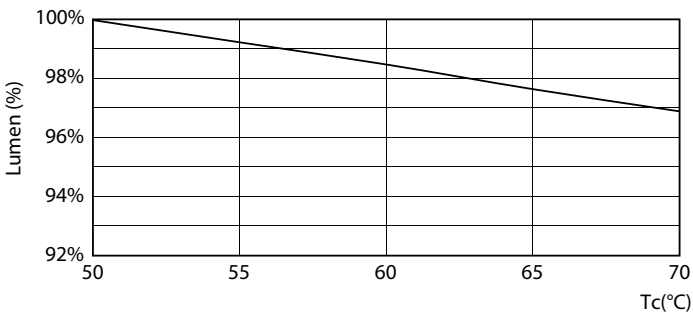
8-5W G13 830 3000K

Lifetime



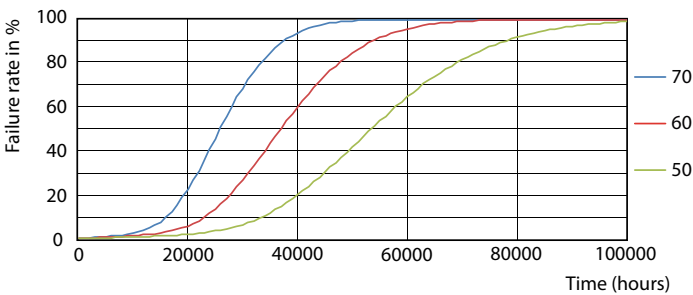
8.5W G13

8.5W G13



8.5W G13

8.5W G13



8.5W G13

