

T8

30T8/COR/96-850/IF42/G/FA8 10/1

Our TLEDs are available in InstantFit (Type A / Type C) or MainsFit (Ballast bypass / Type B) versions. The InstantFit lamps work on a broad variety of ballasts and LED drivers. Only InstantFit has over 15,000 lamp & ballast combinations delivering even light output, energy savings and a long lifetime. Our MainsFit products feature a double-ended design, simplifying installation while a proprietary safety circuit minimizes a shock risk. Lamp sizes range from 2-foot to 8-foot and U-bend with a variety of lumen outputs.

Product data

General Information	
Base	FA8 [FA8]
EU RoHS compliant	Yes
Nominal Lifetime (Nom)	50000 h
Switching Cycle	50000X
Light Technical	
Color Code	850 [CCT of 5000K]
Beam Angle (Nom)	240 °
Initial lumen (Nom)	4200 lm
Luminous Flux (Rated) (Nom)	4200 lm
Correlated Color Temperature (Nom)	5000 K
Color Consistency	ANSI
Color Rendering Index (Nom)	80
LLMF At End Of Nominal Lifetime (Nom)	70 %
Operating and Electrical	
Input Frequency	35000-150000 Hz
Power (Rated) (Nom)	30 W
Lamp Current (Max)	350 mA

Lamp Current (Min)	100 mA
Starting Time (Nom)	0.5 s
Warm Up Time to 60% Light (Nom)	0.5 s
Power Factor (Nom)	0.9
Voltage (Nom)	200-500 V

Temperature	
T-Ambient (Max)	45 °C
T-Ambient (Min)	-20 °C
T-Storage (Max)	65 °C
T-Storage (Min)	-40 °C
T-Case Maximum (Nom)	45 °C

Controls and Dimming	
Dimmable	No

Mechanical and Housing	
Product Length	2400 mm

T8

Approval and Application

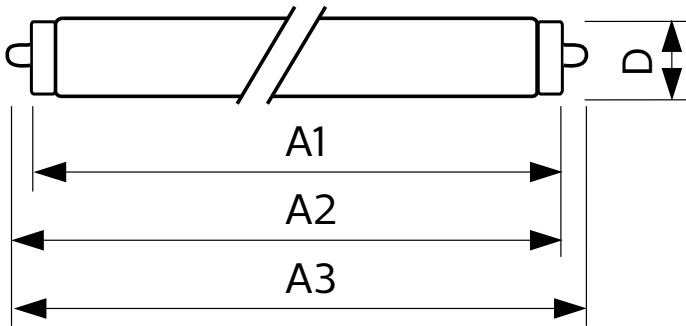
Energy Saving Product	Yes
Approbation Marks	UL certificate RoHS compliance DLC compliance
Energy Certifications	DLC Standard
DesignLights Consortium Qualified Product List	-

Product Data

XUCDM.COPY.Product.Title	30T8/COR/96-850/IF42/G/FA8 10/1
--------------------------	---------------------------------

EAN/UPC - Product	046677533038
Order code	533034
Numerator - Quantity Per Pack	1
Numerator - Packs per outer box	10
Material Nr. (12NC)	929001897404
Net Weight (Piece)	0.540 kg
Model Number	9290018974

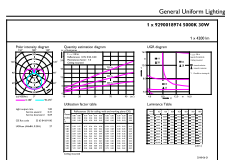
Dimensional drawing



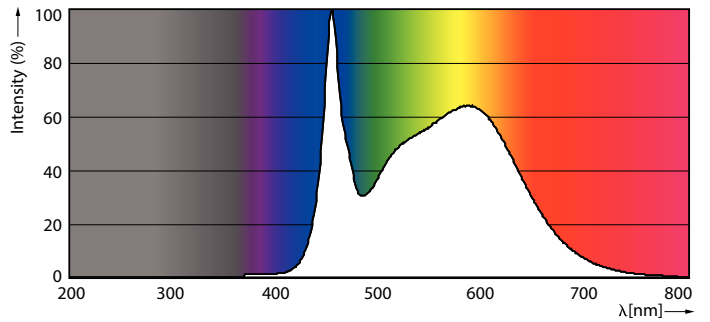
TLED IF CorePro 8ft 4200lm FA8 5000K

Product	D1	D2	A1	A2	A3
30T8/COR/96-850/IF42/G/FA8 10/1	25.5 mm	28 mm	2366.9 mm	2375.8 mm	2384.7 mm

Photometric data

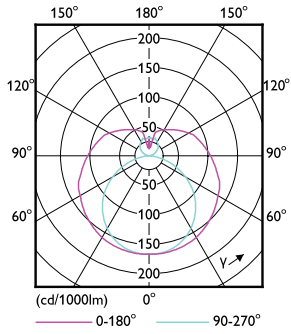


30W FA8 850 5000K



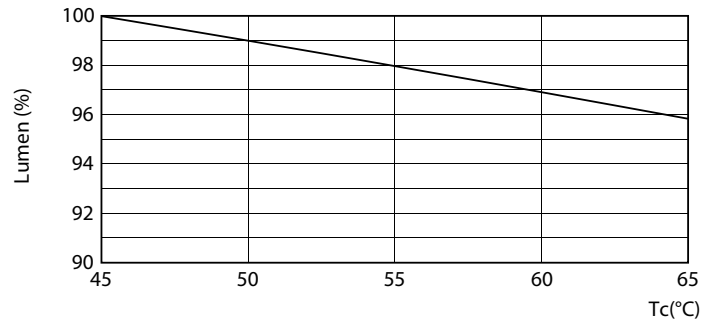
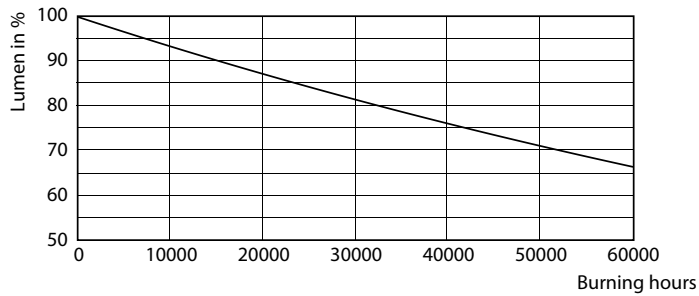
30W FA8

Photometric data



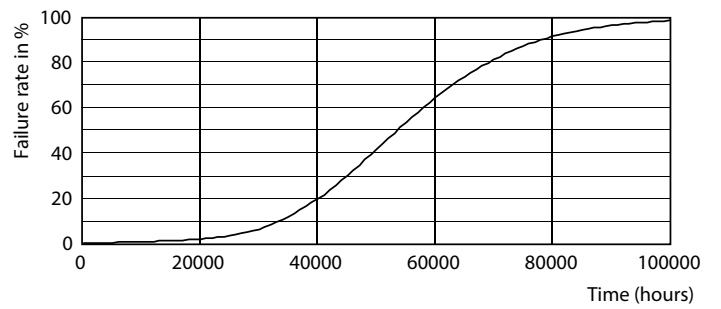
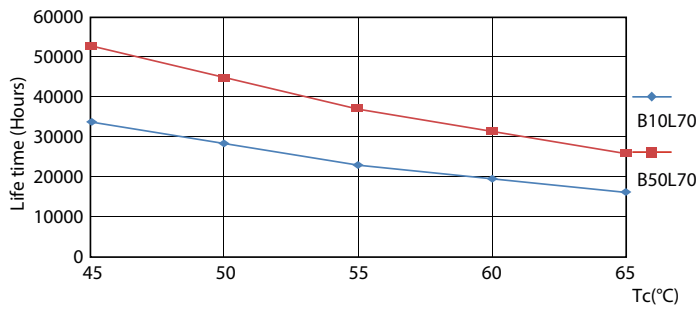
30W FA8 830 3000K

Lifetime



30W FA8

30W FA8

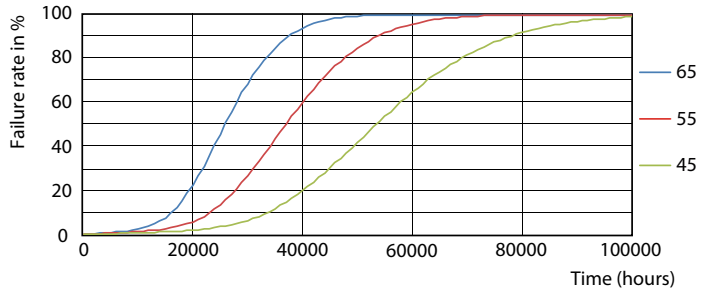


30W FA8

30W FA8

T8

Lifetime



30W FA8

