



# PL-C/T

## 5.5PL-C/LED/13H/835/IF5/P/4P 20/1

Philips PLED 4-pin & 2-pin lamps are an affordable LED solution to replace compact fluorescent lamps. The product provides a natural lighting effect for use in many lighting applications, and provides instant energy savings, making them an environmentally-friendly solution. Available as replacements for 13W, 26W and 32W compact fluorescent lamps.

### Product data

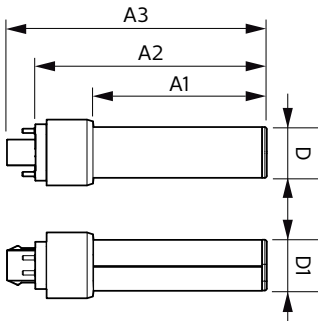
General Information		Starting Time (Nom)	
Base	G24Q [ G24q]		0.5 s
EU RoHS compliant	Yes	Warm Up Time to 60% Light (Nom)	0.5 s
Nominal Lifetime (Nom)	50000 h	UL Type	Type A - works on ballast
Switching Cycle	50000X	Power Factor (Nom)	0.9
		Voltage (Nom)	14-60 V
Light Technical		Temperature	
Color Code	835 [ CCT of 3500K]	T-Ambient (Max)	45 °C
Beam Angle (Nom)	150 °	T-Ambient (Min)	-20 °C
Initial lumen (Nom)	550 lm	T-Storage (Max)	65 °C
Color Designation	White (WH)	T-Storage (Min)	-40 °C
Correlated Color Temperature (Nom)	3500 K	T-Case Maximum (Nom)	75 °C
Luminous Efficacy (rated) (Nom)	100.00 lm/W		
Color Consistency	<6	Controls and Dimming	
Color Rendering Index (Nom)	82	Dimmable	Yes
LLMF At End Of Nominal Lifetime (Nom)	70 %		
Operating and Electrical		Mechanical and Housing	
Input Frequency	25000-100000 Hz	Bulb Material	Plastic
Power (Rated) (Nom)	5.5 W	Product Length	5.5 in
Lamp Current (Max)	280 mA		
Lamp Current (Min)	130 mA	Approval and Application	
		Energy Efficiency Label (EEL)	Not applicable

# PL-C/T

Energy Saving Product	Yes
Approbation Marks	RoHS compliance UL certificate
Energy Consumption kWh/1000 h	- kWh
<b>Product Data</b>	
Order product name	5.5PL-C/LED/13H/835/IF5/P/4P 20/1
EAN/UPC - Product	046677532413
Order code	532416

Numerator - Quantity Per Pack	1
Numerator - Packs per outer box	20
Material Nr. (12NC)	929001885504
Net Weight (Piece)	0.060 kg
Model Number	9290018855

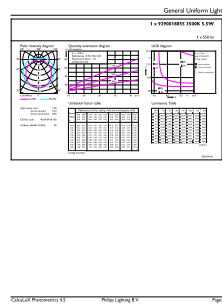
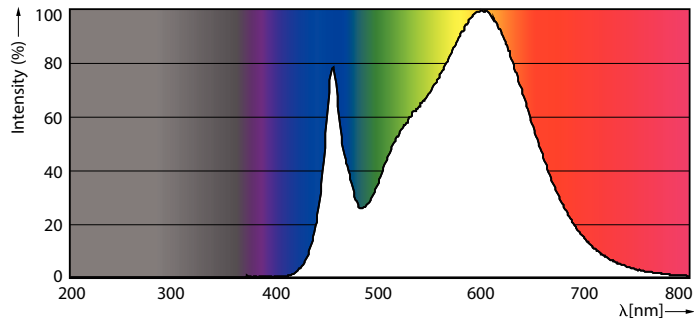
## Dimensional drawing



PLED PLC-H 5-13W 580lm 3500K G24q

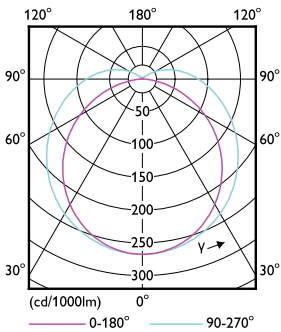
Product	D	D1	A1	A2	A3
5.5PL-C/LED/13H/835/IF5/P/4P 20/1	27 mm	27 mm	91.5 mm	122.4 mm	137.4 mm

## Photometric data



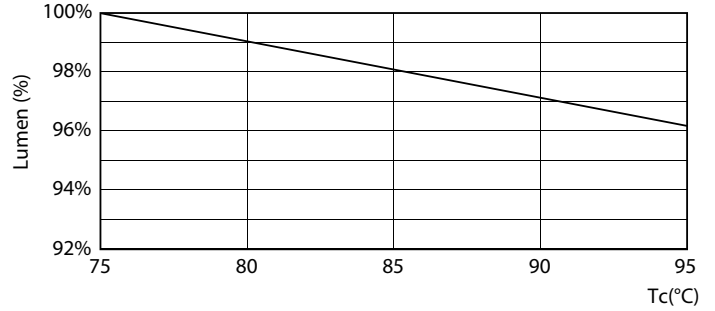
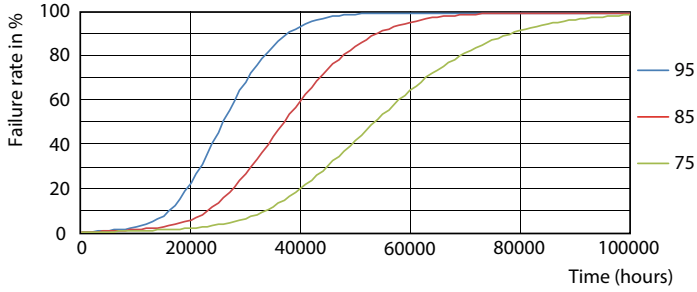
LEDtube PLC 13H 5.5W G24Q 835 15D ND

LEDtube PLC 13H 5.5W G24Q 835 15D ND



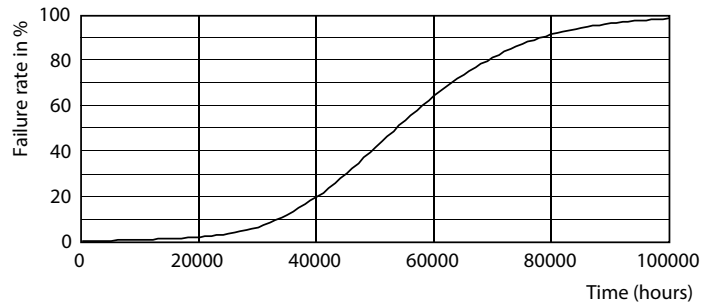
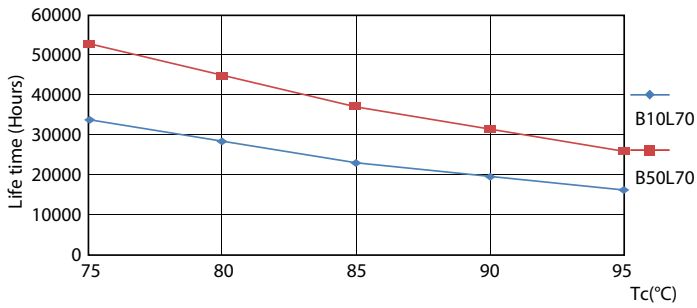
LEDtube PLC 13H 5W GX23-2 827 15D ND

Lifetime



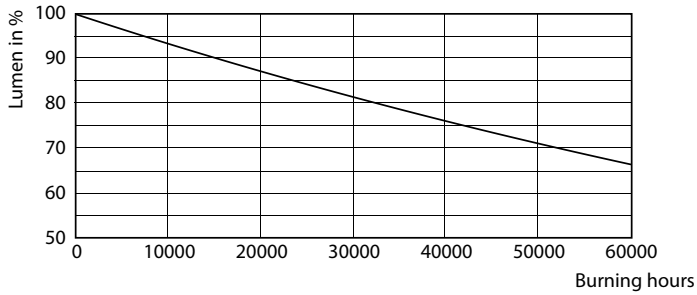
LEDtube PLC 13H 5.5W G24Q 827 15D ND

LEDtube PLC 13H 5.5W G24Q 827 15D ND



LEDtube PLC 13H 5.5W G24Q 827 15D ND

LEDtube PLC 13H 5W GX23-2 827 15D ND



LEDtube PLC 13H 5W GX23-2 827 15D ND

