



PL-S

5PL-S/LED/13H/835/IF5/P/2P 20/1

Philips LED PL-S lamps make the transition to LED from CFL lamps as simple as replacing a lamp. The InstantFit (UL Type A) 2-pin PL-S LED lamps are available in a wide array of color temperatures. They quickly and effectively replace 13W 2-pin compact fluorescent PL-S lamps.

Product data

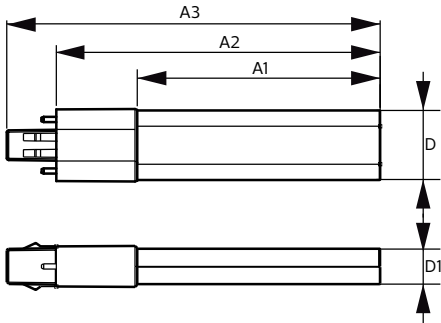
General Information		Temperature	
Base	GX23 [GX23]	Warm Up Time to 60% Light (Nom)	0.5 s
EU RoHS compliant	Yes	UL Type	Type A - works on ballast
Nominal Lifetime (Nom)	50000 h	Power Factor (Nom)	0.9
Switching Cycle	50000X	Voltage (Nom)	120-277 V
Light Technical		Controls and Dimming	
Color Code	835 [CCT of 3500K]	Dimmable	No
Beam Angle (Nom)	120 °	Mechanical and Housing	
Initial lumen (Nom)	560 lm	Bulb Material	Plastic
Color Designation	White (WH)	Product Length	6.7 in
Correlated Color Temperature (Nom)	3500 K	Approval and Application	
Luminous Efficacy (rated) (Nom)	112.00 lm/W	Energy Efficiency Label (EEL)	Not applicable
Color Consistency	<6	Energy Saving Product	Yes
Color Rendering Index (Nom)	82	Approbation Marks	UL certificate RoHS compliance
LLMF At End Of Nominal Lifetime (Nom)	70 %		
Operating and Electrical			
Input Frequency	50 to 60 Hz		
Power (Rated) (Nom)	5 W		
Lamp Current (Max)	50 mA		
Lamp Current (Min)	15 mA		
Starting Time (Nom)	0.5 s		

PL-S

Energy Consumption kWh/1000 h	- kWh
Product Data	
Order product name	5PL-S/LED/13H/835/IF5/P/2P 20/1
EAN/UPC - Product	046677529574
Order code	529578
Numerator - Quantity Per Pack	1

Numerator - Packs per outer box	20
Material Nr. (12NC)	929001863004
Net Weight (Piece)	0.043 kg
Model Number	9290018630

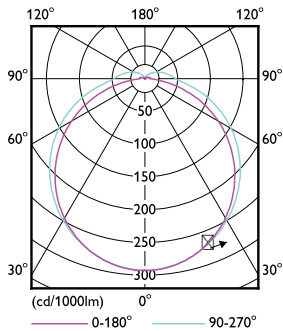
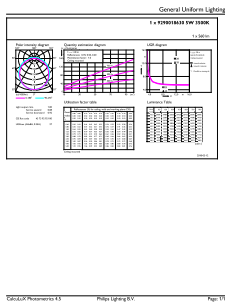
Dimensional drawing



PLED PLS 120-277V 5-13W 580lm 3500K GX23

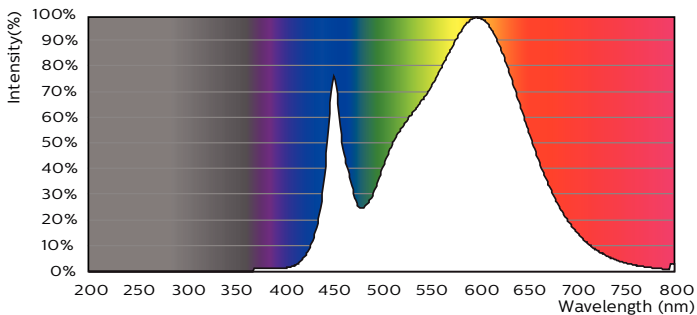
Product	D	D1	A1	A2	A3
5PL-S/LED/13H/835/IF5/P/2P 20/1	31.1 mm	15.8 mm	108 mm	144 mm	166 mm

Photometric data



LEDtube PLS 5W GX23 835 2P 12D ND

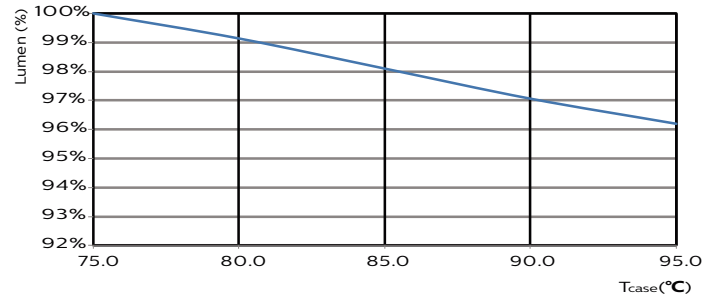
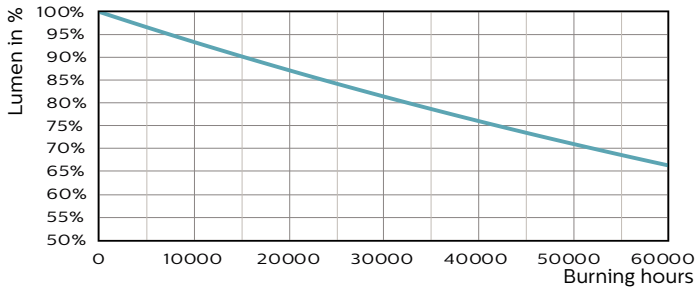
LEDtube PLS 5W GX23 827 2P 12D ND



LEDtube PLS 5W GX23 835 2P 12D ND

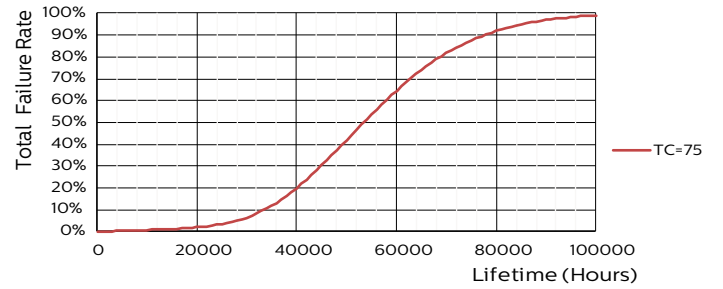
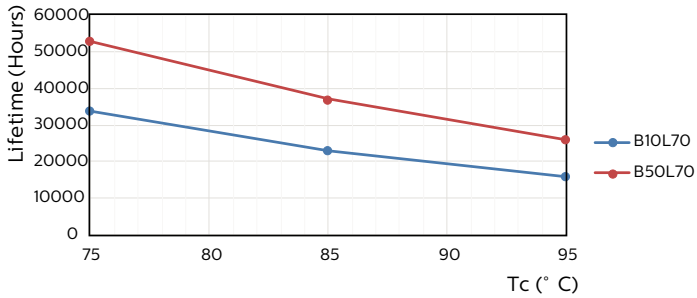
PL-S

Lifetime



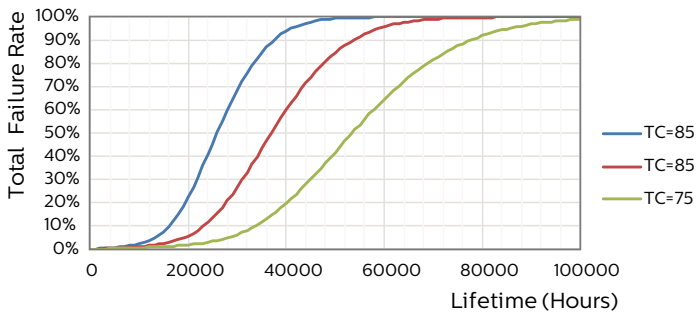
LEDtube PLS 5W GX23 827 2P 12D ND

LEDtube PLS 5W GX23 827 2P 12D ND



LEDtube PLS 5W GX23 827 2P 12D ND

LEDtube PLS 5W GX23 827 2P 12D ND



LEDtube PLS 5W GX23 827 2P 12D ND

