



# LED InstantFit Lamps

## 14T8/48-4000 IF 10/1 DIM TAA/NAFTA

Philips LED T8 InstantFit Lamps are an ideal energy saving choice for existing linear fluorescent fixtures.

### Product data

General Information		Voltage (Nom)	
Cap-Base	G13 [ Medium Bi-Pin Fluorescent]	120-277, 347 V	
Main Application	Industrial	Temperature	
Nominal Lifetime (Nom)	50000 h	T-Ambient (Max)	45 °C
Switching Cycle	50000X	T-Ambient (Min)	-20 °C
B50L70	50000 h	T-Storage (Max)	65 °C
		T-Storage (Min)	-40 °C
		T-Case Maximum (Nom)	45 °C
Light Technical		Controls and Dimming	
Color Code	841 [ CCT of 4100K (841)]	Dimmable	Yes
Initial lumen (Nom)	2100 lm	Mechanical and Housing	
Luminous Flux (Rated) (Nom)	2100 lm	Product Length	1200 mm
Correlated Color Temperature (Nom)	4000 K	Approval and Application	
Color Consistency	<6	Energy Saving Product	Yes
Color Rendering Index (Nom)	82	Energy Efficiency Label (EEL)	Not applicable
LLMF At End Of Nominal Lifetime (Nom)	70 %	Approbation Marks	UL certificate RoHS compliance
Operating and Electrical		Product Data	
Input Frequency	50 to 60 Hz	Order product name	14T8/48-4000 IF 10/1 DIM TAA/NAFTA
Power (Rated) (Nom)	14 W	EAN/UPC - Product	046677472665
Lamp Current (Nom)	180 mA	Order code	469627
Starting Time (Nom)	0.5 s		
Warm Up Time to 60% Light (Nom)	0.5 s		
Power Factor (Nom)	0.9		

# LED InstantFit Lamps

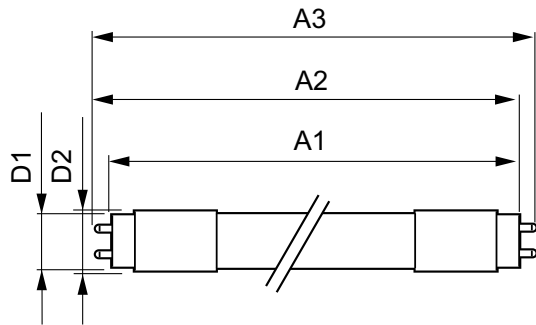
Numerator - Quantity Per Pack	1
Numerator - Packs per outer box	10
Material Nr. (12NC)	929001158784

Net Weight (Piece)	0.001 kg
--------------------	----------

## Warnings and Safety

- Perform a visual inspection to ensure lamp holders (or sockets) are not damaged or loose. If the lamp holders (or sockets) are damaged, corroded, charred, blackened or loose, contact a qualified electrician for proper replacement.
- Please refer to the ballast compatibility guide located at [www.philips.com/instantfit](http://www.philips.com/instantfit).

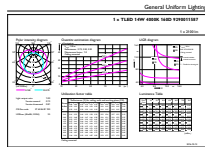
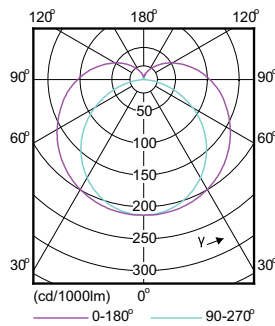
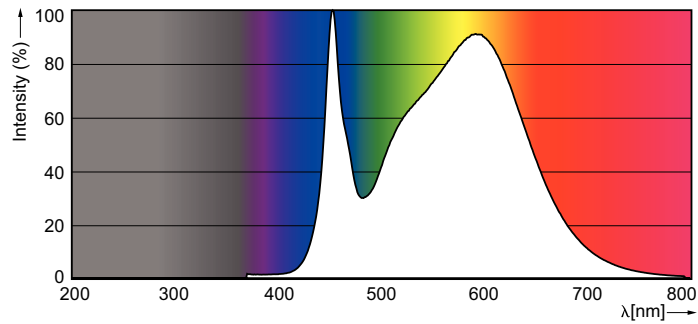
## Dimensional drawing



LEDtube 1200mm 15W/840

Product	D1	D2	A1	A2	A3
14T8/48-4000 IF 10/1 DIM	25.7 mm	28 mm	1198.0 mm	1205.0 mm	1212.0 mm
TAA/NAFTA					

## Photometric data



# LED InstantFit Lamps

## Lifetime

