



LED InstantFit Lamps

14T8/48-4000 IF 10/1 DIM

Philips LED T8 InstantFit Lamps are an ideal energy saving choice for existing linear fluorescent fixtures.

Product data

General Information	
Cap-Base	G13 [Medium Bi-Pin Fluorescent]
Main Application	Industrial
Nominal Lifetime (Nom)	50000 h
Switching Cycle	50000X
B50L70	50000 h
Light Technical	
Color Code	841 [CCT of 4100K (841)]
Beam Angle (Nom)	160 °
Initial lumen (Nom)	2100 lm
Luminous Flux (Rated) (Nom)	2100 lm
Rated Beam Angle	160 °
Correlated Color Temperature (Nom)	4000 K
Color Consistency	<6
Color Rendering Index (Nom)	82
LLMF At End Of Nominal Lifetime (Nom)	70 %
Operating and Electrical	
Input Frequency	50 to 60 Hz
Power (Rated) (Nom)	14 W
Lamp Current (Nom)	180 mA
Starting Time (Nom)	0.5 s
Warm Up Time To 60% Light (Nom)	0.5 s

Power Factor (Nom)	0.9
Voltage (Nom)	120-277, 347 V
Temperature	
T-Ambient (Max)	45 °C
T-Ambient (Min)	-20 °C
T-Storage (Max)	65 °C
T-Storage (Min)	-40 °C
T-Case Maximum (Nom)	45 °C
Controls and Dimming	
Dimmable	Yes
Mechanical and Housing	
Product Length	1200 mm
Approval and Application	
DesignLights Consortium Qualified Product List	DesignLights Consortium Qualified Product List
Energy Saving Product	Yes
Suitable For Accent Lighting	No
Approbation Marks	UL certificate RoHS compliance
Energy Consumption kWh/1000 h	18 kWh

LED InstantFit Lamps

Product Data

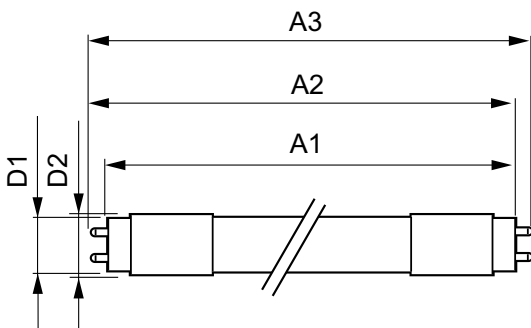
Order product name	14T8/48-4000 IF 10/1 DIM
EAN/UPC - Product	046677472252
Order code	468322
Numerator - Quantity Per Pack	1

Numerator - Packs per outer box	10
Material Nr. (12NC)	929001158764
Net Weight (Piece)	0.230 kg

Warnings and Safety

- Perform a visual inspection to ensure lamp holders (or sockets) are not damaged or loose. If the lamp holders (or sockets) are damaged, corroded, charred, blackened or loose, contact a qualified electrician for proper replacement.
- Please refer to the ballast compatibility guide located at www.philips.com/instantfit.

Dimensional drawing



LEDtube 1200mm 15W/840

Product	D1	D2	A1	A2	A3
14T8/48-4000 IF 10/1 DIM	25.68 mm	28 mm	1198.0 mm	1205.0 mm	1212.0 mm

Photometric data

