

LED InstantFit Lamps

24T5 LED/HO/48-5000 IF 10/1

Philips LED T5 InstantFit Lamps are an ideal energy saving choice for existing linear fluorescent fixtures.

Product data

| General Information | | Voltage (Nom) | |
|---------------------------------------|---------------------|--|--|
| Cap-Base | G5 [G5] | 39-64 V | |
| Nominal Lifetime (Nom) | 50000 h | Temperature | |
| Switching Cycle | 50000X | T-Ambient (Max) | 45 °C |
| B50L70 | 50000 h | T-Ambient (Min) | -20 °C |
| | | T-Storage (Max) | 65 °C |
| | | T-Storage (Min) | -40 °C |
| Light Technical | | Controls and Dimming | |
| Color Code | 850 [CCT of 5000K] | Dimmable | No |
| Initial lumen (Nom) | 3500 lm | Mechanical and Housing | |
| Luminous Flux (Rated) (Nom) | 3500 lm | Product Length | 1100 mm |
| Correlated Color Temperature (Nom) | 5000 K | Approval and Application | |
| Color Consistency | <5 | DesignLights Consortium Qualified Product List | DesignLights Consortium Qualified Product List |
| Color Rendering Index (Nom) | 82 | Energy Saving Product | Yes |
| LLMF At End Of Nominal Lifetime (Nom) | 70 % | Approbation Marks | UL certificate RoHS compliance |
| Operating and Electrical | | Product Data | |
| Input Frequency | 40000-80000 Hz | Order product name | 24T5 LED/HO/48-5000 IF 10/1 |
| Power (Rated) (Nom) | 24 W | EAN/UPC - Product | 046677467159 |
| Lamp Current (Max) | 600 mA | Order code | 467159 |
| Lamp Current (Min) | 400 mA | Numerator - Quantity Per Pack | 1 |
| Starting Time (Nom) | 0.5 s | | |
| Warm Up Time to 60% Light (Nom) | 0.5 s | | |
| Power Factor (Nom) | 0.9 | | |

LED InstantFit Lamps

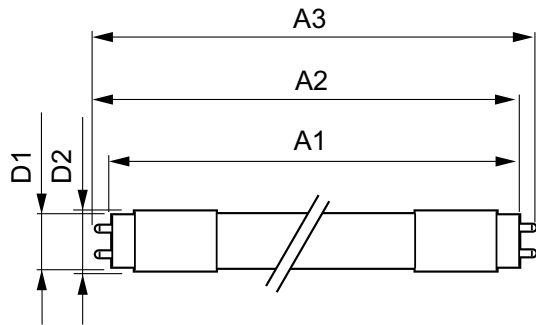
| | |
|---------------------------------|--------------|
| Numerator - Packs per outer box | 10 |
| Material Nr. (12NC) | 929001284004 |
| Net Weight (Piece) | 0.170 kg |

| | |
|--------------|------------|
| Model Number | 9290012840 |
|--------------|------------|

Warnings and Safety

- Perform a visual inspection to ensure lamp holders (or sockets) are not damaged or loose. If the lamp holders (or sockets) are damaged, corroded, charred, blackened or loose, contact a qualified electrician for proper replacement.
- Please refer to the ballast compatibility guide located at www.philips.com/instantfit.

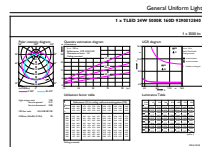
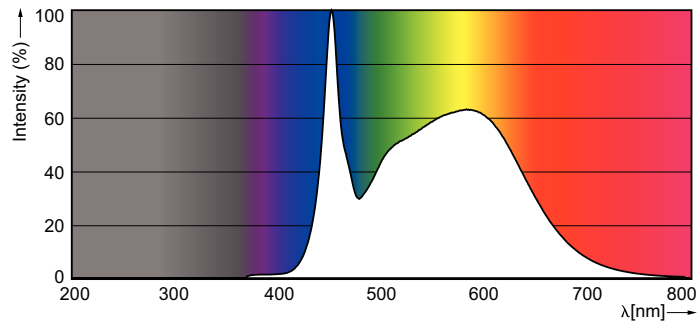
Dimensional drawing



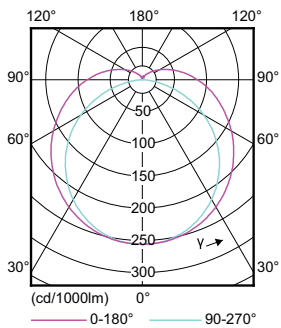
TLED 120V 24-54W 3600lm 5000K G5

| Product | D1 | D2 | A1 | A2 | A3 |
|------------------------|---------|---------|-----------|-----------|---------|
| 24T5 LED/HO/48-5000 IF | 15.2 mm | 17.8 mm | 1147.8 mm | 1154.9 mm | 1162 mm |
| 10/1 | | | | | |

Photometric data



General Information Lighting
Page 10



LED InstantFit Lamps

