



# LED InstantFit Lamps

15T8/48-4000 IF 10/1

Philips LED T8 InstantFit Lamps are an ideal energy saving choice for existing linear fluorescent fixtures. Philips LED T8 InstantFit Lamps are an ideal energy saving choice for existing linear fluorescent fixtures.

## Product data

### • General Information

Cap-Base	G13 [ G13 Medium Bi-Pin Fluorescent]
Main Application	Industrial
Nominal Lifetime (Nom)	40000 h
Switching Cycle B50L70	50000X 40000

### • Light Technical

Color Code	840 [ CCT of 4000K (841)]
Beam Angle (Nom)	160 °
Luminous Flux (Rated) (Nom)	2100 lm
Rated Beam Angle	160 °
Correlated Color Temperature (Nom)	4000 K
Color Consistency	6 steps
Color Rendering Index (Nom)	82
LLMF At End Of Nominal Lifetime (Nom)	70 %

### • Operating and Electrical

Input Frequency	50 to 60 Hz
Power (Rated) (Nom)	15 W
Starting Time (Max)	0.5 s
Warm Up Time To 60% Light (Nom)	instant full light
Power Factor (Min)	0.9
Voltage (Nom)	120-277 V

### • Temperature

T-Ambient (Max)	45 °C
T-Ambient (Min)	-20 °C
T-Storage (Max)	65 °C
T-Storage (Min)	-40 °C
T-Case Maximum (Nom)	50 °C

### • Controls and Dimming

Dimmable	Yes
----------	-----

### • Mechanical and Housing

Product Length	1200 mm
----------------	---------

### • Approval and Application

Energy Saving Product	Yes
Suitable For Accent Lighting	No
Energy Efficiency Label (EEL)	A+
Approval Marks	CE marking UL certificate RoHS compliance KEMA Keur certificate
Energy Consumption kWh/1000 h	18 kWh

### • Product Data

Order product name	15T8/48-4000 IF 10/1
EAN/UPC - Product	046677456917
Order code	929001158704

# PHILIPS

# LED InstantFit Lamps

Numerator - Quantity Per Pack 1  
Numerator - Packs per outer box 10

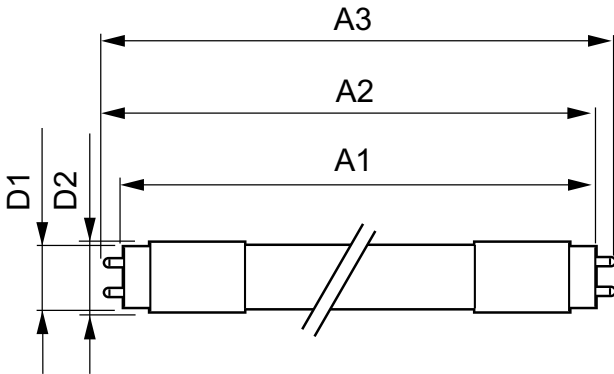
Material Nr. (12NC) 929001158704  
Net Weight (Piece) 0.360 kg

## Warnings and Safety

- Philips LED T8 InstantFit lamps will only operate properly on compatible instant-start ballasts. Please refer to the Philips LED T8

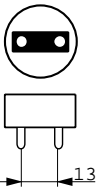
InstantFit Installation Guide, which can be obtained through your local Philips Sales Representative, or visit [www.philips.com/tled](http://www.philips.com/tled)

## Dimensional drawing

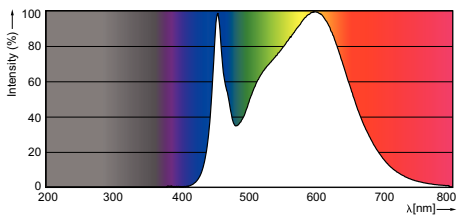


### LEDtube 1200mm 15W/840

Product	D1	D2	A1	A2	A3
15T8/48-4000 IF 10/1	25.68 mm	28 mm	1198.0 mm	1205.0 mm	1212.0 mm



## Photometric data





© 2016 Philips Lighting Holding B.V.  
All rights reserved.

Specifications are subject to change without notice. Trademarks are the property of Koninklijke Philips N.V. (Royal Philips) or their respective owners.

[www.philips.com/lighting](http://www.philips.com/lighting)

2016, June 9  
data subject to change