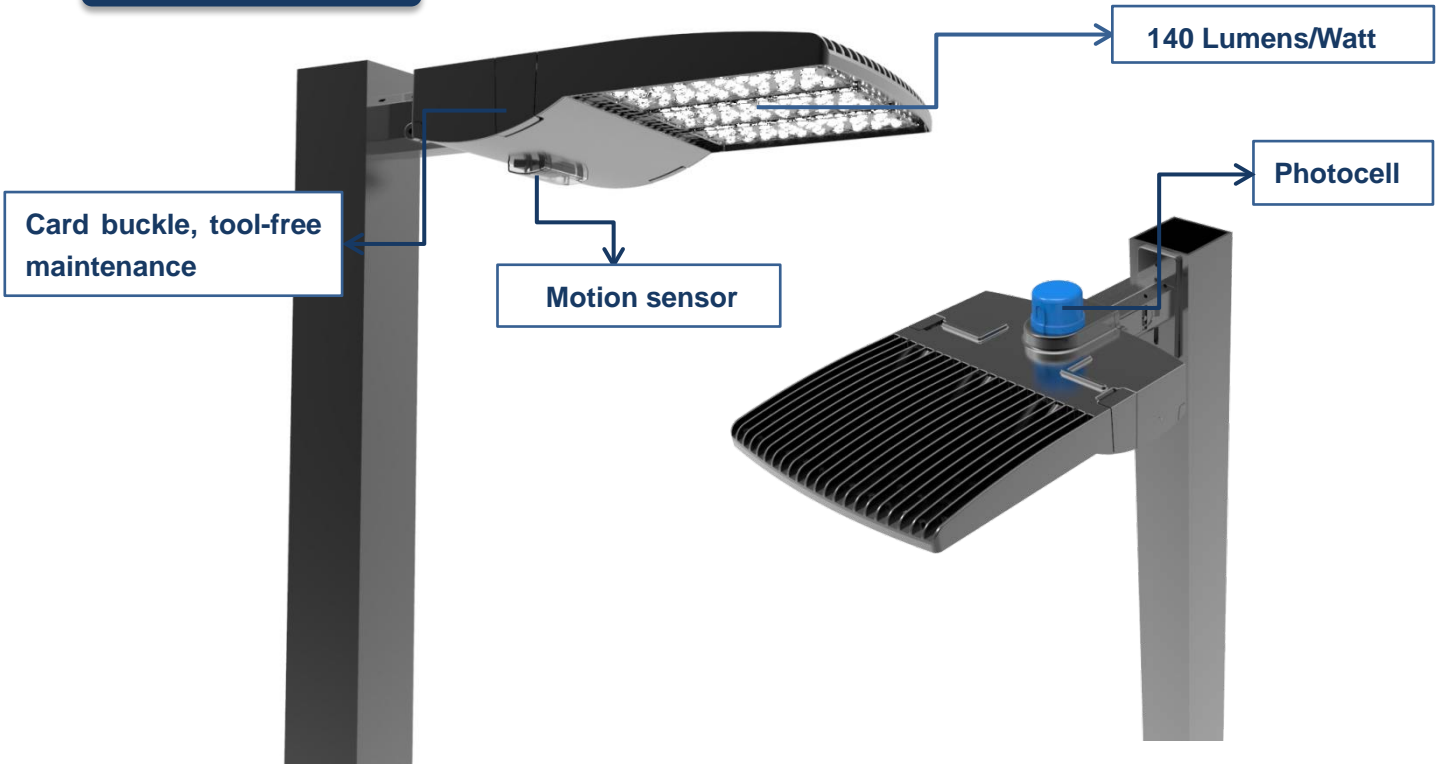


LUNA 320 AREA LIGHT

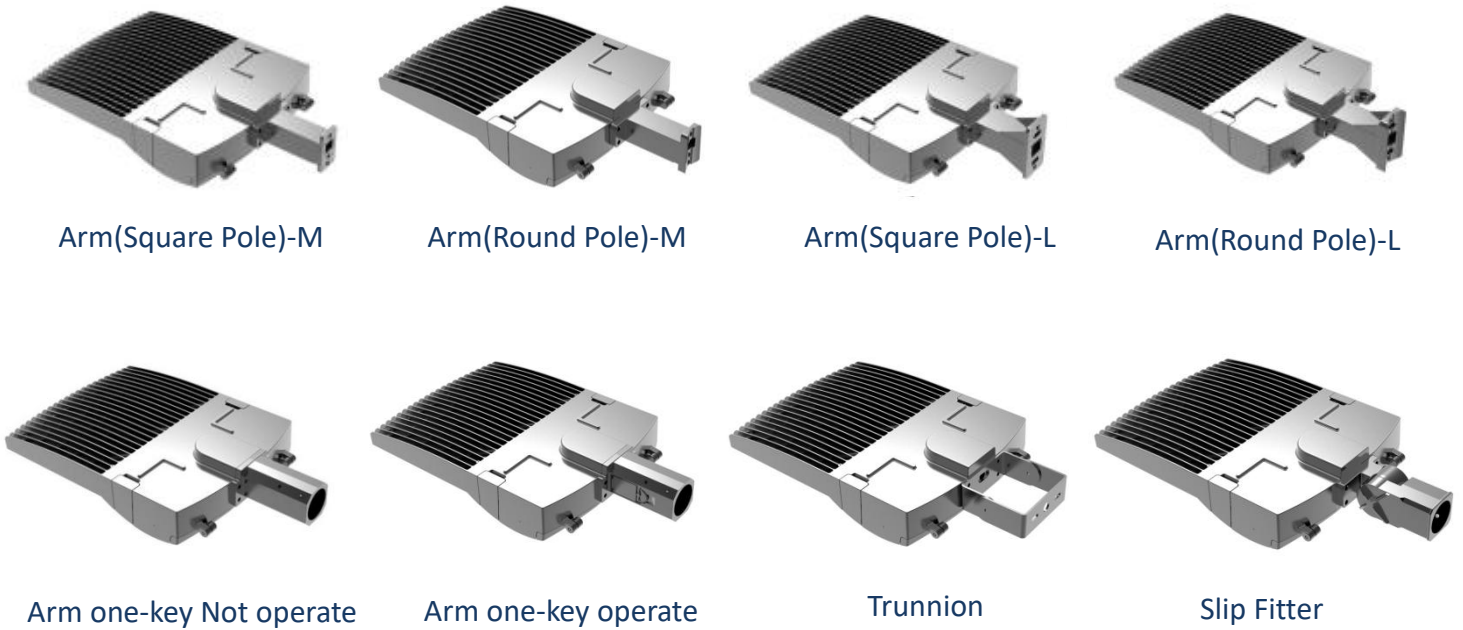
TECHNICAL DATA SHEET



Features



Mounting Options



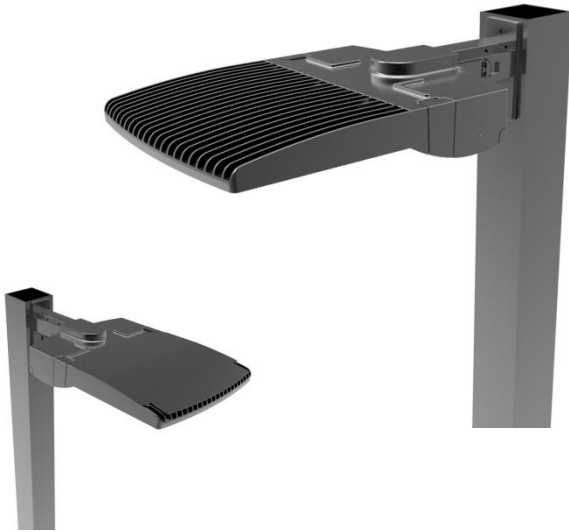
Note: M-Medium, L-Large

LUNA 320 AREA LIGHT

TECHNICAL DATA SHEET



SPECIFICATIONS



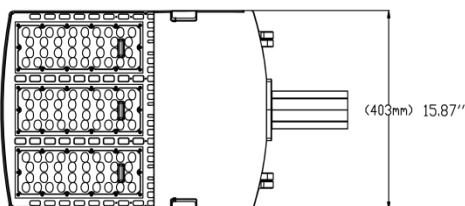
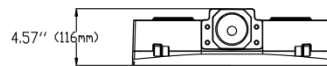
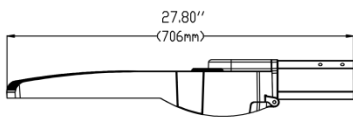
- High lumen efficacy - 140lm/w
- One-person installation available
- 8 installation brackets for option
- Nema 3-pin, 5-pin and 7-pin receptacle for option
- Photocell & Motion sensor for option(dimmable)
- LED module complies with IP67, Anti-corrosion enhanced
- Anti-debris and wildlife protection cover for option
- Tool-free entry for quick installation
- Built-in 10KV Surge protector, 20KV as option
- Dark-sky compliant

LUNA 200 AREA LIGHT	
Model	LUNA-320A-XXK-N-U-Z-D LUNA-320B-XXK-N-U-Z-D
Power Consumption	320W
Input Voltage	120-277VAC / 277-480VAC
Power Factor	>0.90
Lumen Efficiency	140lm/W
Lumen	44800lm
LED Brand	Lumileds 3030
CCT	3000K/4000K/5000K
CRI	75
Optics	Type3/Type5
Finish	Dark Bronze/White/Grey
Dimmable	Dim
Lifespan	50,000hrs
Operating Temperature	-40~50°C
Driver Brand	Inventronics

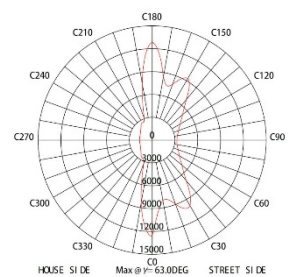
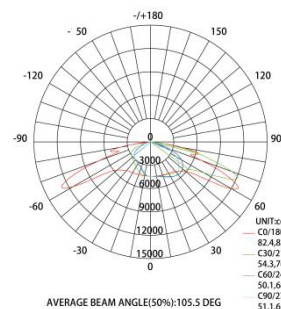


PHILIPS
LUMILEDS

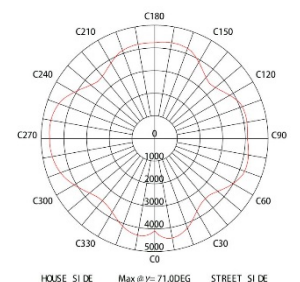
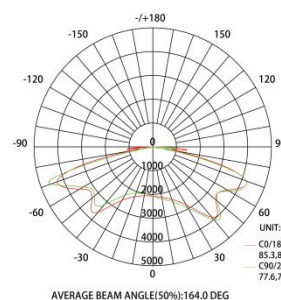
DIMENSION



DISTRIBUTION CURVE



Type 3



Type 5