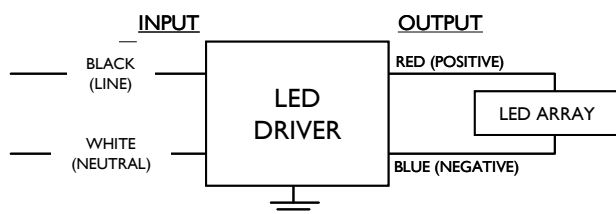


Electrical Specifications

LED120A0012V50F	
Brand Name	XITANIUM
Driver Type	Electronic
Input Voltage	120
Input Frequency	50/60Hz
RoHS	No
Approbations	UL, CSA
Status	Active

Output Power (W)	Output Voltage (V)	Output Current (A)	Operating Temp. Range (°F/°C)	Input Current at 120V (A)	Max. Input Power (W)	Inrush Current (A _{pk} /μs)	Max. THD (%)	Min. Power Factor	Surge Protection (KV)	Weight (Lbs)	Envir. Protection Rating
10 ~ 60	12	0.8 ~ 5.0	-40°~140°F (-40~60°C)	0.63	75	-	20	0.99	2.5	1.4/635	UL Dry & Damp

Wiring Diagram



Input and output use lead-wires.
Lead-wires are 18AWG 105C/600V solid copper

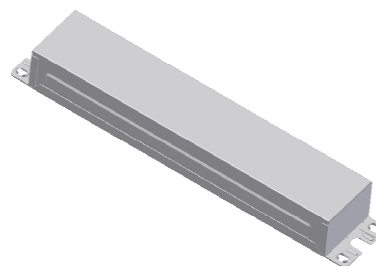
Standard Lead Length

	in.	cm.
Black	9	22
White	9	22
Blue	26	66
Red	26	66
Gray		
Violet		

Maximum Wiring Distance (at full load)

Wire Size (AWG)	Distance (feet)
26	2
24	4
22	6
20	10
18	15
16	24
14	38
12	59
10	100

Enclosure



	in. (mm)
Case Length	8.34 (211.8)
Case Width	1.76 (42.5)
Case Height	1.1 (27.9)
Mounting Length	8.99 (228.4)
Mounting Width	1.22 (30.9)
Overall Length	9.45 (240)
Material, Color	Steel, White



UL Class 2
E220165



7310_S-000
3426-32

Revised 05/15/2012

PHILIPS LIGHTING ELECTRONICS N.A.
10275 WEST HIGGINS ROAD • ROSEMONT, IL 60018
Tel: 800-322-2086 • Fax: 888-423-1882 • www.philips.com/advance
Customer Support/Technical Service: 800-372-3331 • OEM Support: 866-915-5886

LED120A0012V50F	
Brand Name	XITANIUM
Driver Type	Electronic
Input Voltage	120
Input Frequency	50/60Hz
RoHS	No
Approbations	UL, CSA
Status	Active

Installation & Application Notes:

Section I – Physical Characteristics

- 1.1 LED Driver shall be installed inside an electrical enclosure
- 1.2 Wiring inside electrical enclosure shall comply with 600V/105°C rating or higher.

Section II – Performance

- 2.1 LED Driver is UL Class 2 power unit as per UL1310. It is also listed in the UL Sign Accessory Manual (UL SAM).
- 2.2 LED Driver is certified by UL for use in a dry or damp location (Outdoor Type I).
- 2.3 LED Driver has Class A sound rating.
- 2.4 LED Driver tolerates sustained open circuit and short circuit output conditions without damage.
- 2.5 LED Driver maximum allowable case temperature is 90°C – see product label for measurement location.
- 2.6 LED Driver shuts off output power to LEDs if its case temperature exceeds 90°C –thermal protection.
- 2.7 LED Driver complies with FCC rules and regulations, as per Title 47 CFR Part 15 Non-Consumer (Class A) for EMI/RFI (conducted and radiated) at full load.

Section III – UL Conditions of Acceptability (File E220165)

When installed in the end product, consideration shall be given to the following:

- 3.1 This component has been judged on the basis of the required spacings in the Standard for Class 2 Power Units, UL 1310, Fourth Edition, which would cover the component itself if submitted for Listing.
- 3.2 The supply terminals and connectors are suitable for factory wiring only of solid or tinned stranded No. 18 AWG conductors.
- 3.3 The equipment was submitted and tested for a maximum manufacturer's recommended ambient (Tmra) of 40°C.
- 3.4 Leakage current measurements shall be performed when more than four LED drivers are used in the equipment or when the LED driver is used in combination with other equipment in the end-use product.
- 3.5 The drivers are intended for installation inside an electrical enclosure.
- 3.6 The ground connection is not suitable as the equipment ground for a sign. Separate provision for sign grounding must be provided.
- 3.7 LED Driver is suitable for damp location use.

Revision History:

Rev No.	Date	Description	Approval	Remarks
1.1	01/17/2012	* Add Envir. Protection Rating	N.T.	
2.1	03/02/2012	*Modify Part #(Remove Dashes)	N.T.	
3.1	05/15/2012	* Add Approbations: UL, CSA	N.T.	

Revised 05/15/2012

PHILIPS LIGHTING ELECTRONICS N.A.

10275 WEST HIGGINS ROAD • ROSEMONT, IL 60018
Tel: 800-322-2086 • Fax: 888-423-1882 • www.philips.com/advance
Customer Support/Technical Service: 800-372-3331 • OEM Support: 866-915-5886