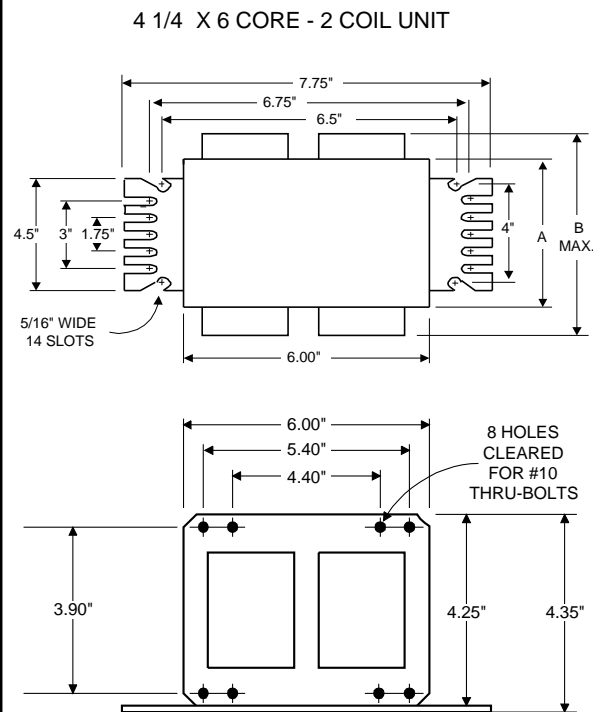


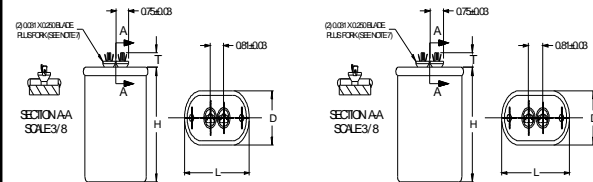
DIMENSIONS AND DATA



	120	208	240	277	480
INPUT VOLTS					
CIRCUIT TYPE	CWA				
POWER FACTOR (min)	98%				
REGULATION	±10%				
Line Volts	WITHIN TRAPEZOID				
Lamp Watts					
LINE CURRENT (Amps)					
Operating.....	9.28	5.32	4.68	4.03	2.31
Open Circuit.....	3.90	2.19	2.01	1.71	0.96
Starting.....	7.80	4.38	3.82	3.30	1.90
UL TEMPERATURE RATINGS	H(180°C)				
Insulation Class	1029				
Coil Temperature Code	C	C	C	C	C
MIN. AMBIENT STARTING TEMP.	-40°F or -40°C				
NOM. OPEN CIRCUIT VOLTAGE	437				
INPUT VOLTAGE AT LAMP DROPOUT.....	89	155	176	202	360
INPUT WATTS	1100				
RECOMMENDED FUSE (Amps).....	25	15	12	10	6
CORE and COIL					
Dimension (A)	3.97				
Dimension (B)	6.00				
Weight (lbs.)	29				
Lead Lengths	18"				
CAPACITOR REQUIREMENT					
Microfarads	26.0				
Volts (min.)	525				
Fault Current Withstand (amps)					
60 Hz TEST PROCEDURES (Refer to Philips Lighting Electronics N.A. TEST Procedure for HID Ballasts - Form 127 High Potential Test (Volts)					
1 minute	2000				
2 seconds	2500				
Open Circuit Voltage Test (Volts)	390-476				
Short-Circuit Current Test (Amps)	6.24-7.63				
Secondary Current					
Input Current.....	5.83-	3.36-	2.92-	2.53-	1.46-
	8.74	5.05	4.38	3.80	2.19

Capacitor: RW1626020

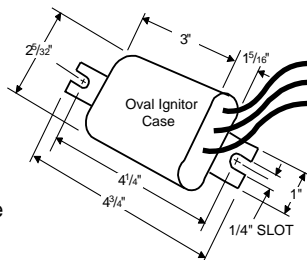
MD2602-100



Capacitance: 26
 Dia/Oval Dim: 1.75
 Height: 4.25
 Temp Rating: 90°C

Capacitance: 26
 Dia/Oval Dim: 1.75
 Height: 5.3
 Temp Rating: 90°C

Ignitor: LI571-H5



Ballast to Lamp Distance (BTL) = 15 feet
 Temp Rating: 105°C



Wiring Diagram:

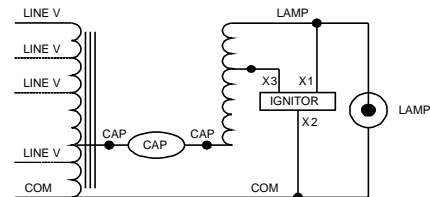


Fig. M

Typical Ordering Information

(please call Philips Lighting Electronics N.A. for suffix availability)

Order Suffix	Description

Data is based upon tests performed by Philips Lighting Electronics N.A. in a controlled environment and is representative of relative performance. Actual performance can vary depending on operating conditions. Specifications are subject to change without notice.

PHILIPS LIGHTING ELECTRONICS N.A.

10275 WEST HIGGINS ROAD · ROSEMONT, IL 60018

Tel: 800-322-2086 · Fax: 888-423-1882 · www.philips.com/advance

Customer Support/Technical Service: 800-372-3331 · OEM Support: 866-915-5886