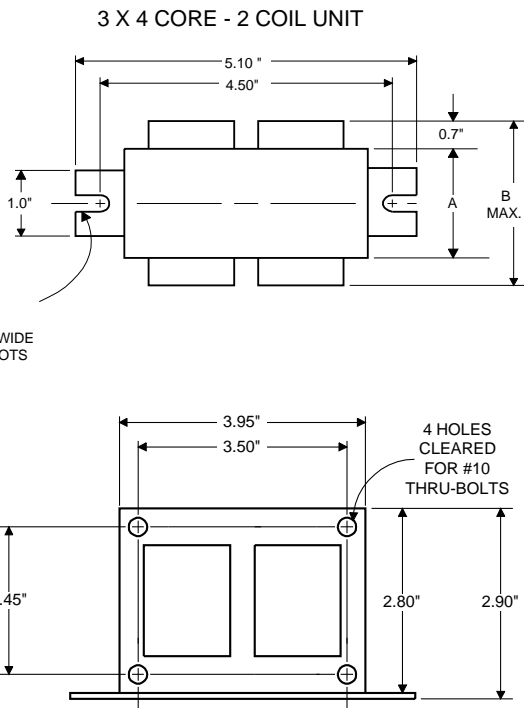
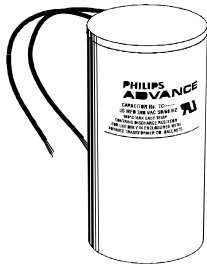


**DIMENSIONS AND DATA**



	120	208	240	277
<b>INPUT VOLTS</b>				
<b>CIRCUIT TYPE</b>	HX-HPF			
<b>POWER FACTOR (min)</b>	90%			
<b>REGULATION</b>				
Line Volts	±5%			
Lamp Watts	±10%			
<b>LINE CURRENT (Amps)</b>				
Operating.....	1.60	1.00	0.80	0.70
Open Circuit.....	3.60	2.10	1.80	1.60
Starting.....	1.70	1.00	0.85	0.80
<b>UL TEMPERATURE RATINGS</b>				
Insulation Class	H(180°C)			
Coil Temperature Code	1029			
MIN. AMBIENT STARTING TEMP.	-20°F or -30°C			
NOM. OPEN CIRCUIT VOLTAGE	240			
INPUT VOLTAGE AT LAMP DROPOUT.....	90	160	180	190
<b>INPUT WATTS</b>	185			
<b>RECOMMENDED FUSE (Amps)</b> .....	9	6	5	4
<b>CORE and COIL</b>				
Dimension (A)	2.50			
Dimension (B)	3.80			
Weight (lbs.)	8.5			
Lead Lengths	12"			
<b>CAPACITOR REQUIREMENT</b>				
Microfarads	16.0			
Volts (min.)	300			
Fault Current Withstand (amps)				
<b>60 Hz TEST PROCEDURES (Refer to Philips Lighting Electronics N.A. TEST Procedure for HID Ballasts - Form 127 High Potential Test (Volts)</b>				
1 minute	2000			
2 seconds	2500			
Open Circuit Voltage Test (Volts)	215-265			
Short-Circuit Current Test (Amps)				
Secondary Current	2.10-2.60			
Input Current.....	1.00-1.60	0.75-1.10	0.50-0.80	0.45-0.65

Capacitor: 7C160M30RA



Capacitance: 16  
Dia/Oval Dim: 1.65  
Height: 2.75  
Temp Rating: 105°C



Wiring Diagram:

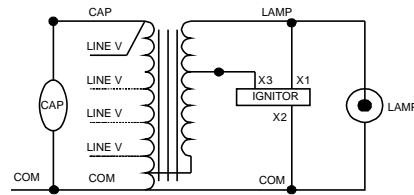


Fig. K

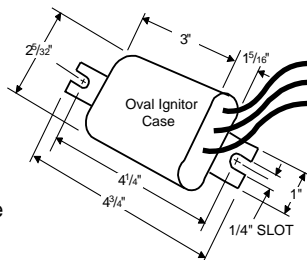
**Typical Ordering Information**

(please call Philips Lighting Electronics N.A. for suffix availability)

**Order Suffix**

**Description**

Ignitor: LI522-H5



Ballast to Lamp Distance (BTL) = 20 feet  
Temp Rating: 105°C

Data is based upon tests performed by Philips Lighting Electronics N.A. in a controlled environment and is representative of relative performance. Actual performance can vary depending on operating conditions. Specifications are subject to change without notice.

**PHILIPS LIGHTING ELECTRONICS N.A.**

10275 WEST HIGGINS ROAD · ROSEMONT, IL 60018

Tel: 800-322-2086 · Fax: 888-423-1882 · www.philips.com/advance

Customer Support/Technical Service: 800-372-3331 · OEM Support: 866-915-5886